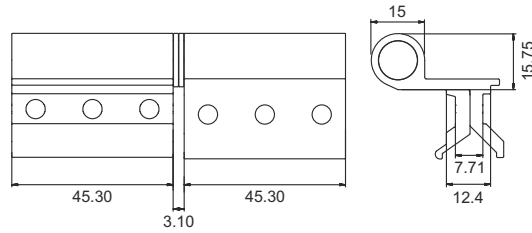


32MM CASEMENT HARDWARE



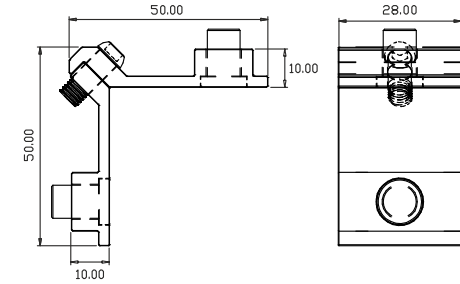
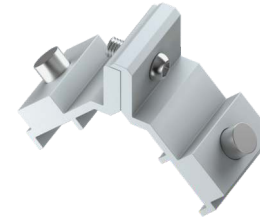
QV451 BLACK / **QV452** WHITE
50MM CASEMENT BUTT HINGE 2-WINGS



MATERIAL : ALUMINIUM



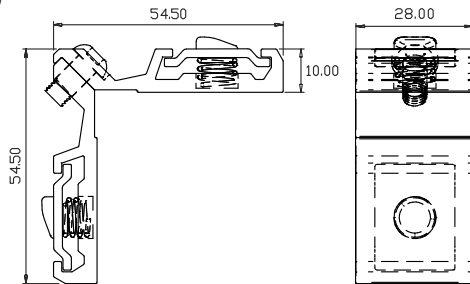
QV212
14X28MM ADJUSTABLE CORNER CLEAT



MATERIAL : ALUMINIUM

FINISH : MILL

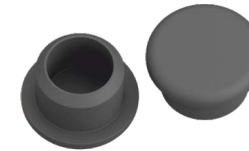
QV213
14X28MM ADJUSTABLE CORNER CLEAT (PREMIUM)



MATERIAL : ALUMINIUM

FINISH : MILL

QV518 BLACK / **QV524** WHITE
11.5MM HOLE CAP



MATERIAL : NYLON



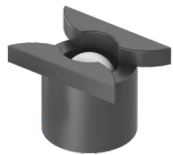
QV519 BLACK / **QV520** WHITE
WATER DRAINAGE CAP WITHOUT
WOOPER PLATE



MATERIAL : NYLON



QV521
DRAIN HOLE COVER BALL



MATERIAL : NYLON



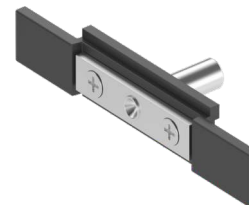
QV522
DRAIN CAPSULE SLOT COVER



MATERIAL : NYLON



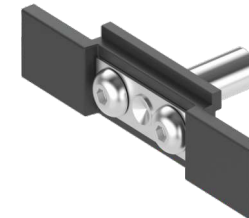
QV552
ROD CONNECTING DEVICE
(STANDARD)



MATERIAL : CASTING



QV553
ROD CONNECTING DEVICE
(PREMIUM)



MATERIAL : CASTING



QV554
SS - 304 GRADE FORK CONNECTOR PIN



MATERIAL : SS

FINISH : MILL

32MM CASEMENT HARDWARE



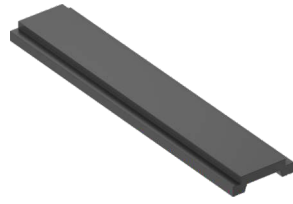
QV569 BLACK / **QV599** WHITE
WATER DRAINAGE CAP WITH
WOOVER PLATE



MATERIAL : NYLON



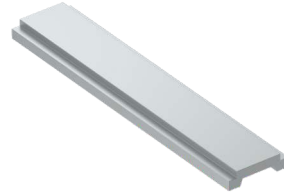
QV901
15/20 EURO POLYMIDE ROAD



MATERIAL : NYLON



QV910
15/20 EURO ALUMINIUM ROD



MATERIAL : ALUMINIUM

FINISH : MILL

QV556 ZINC / **QV591** BLACK
8MM ADJUSTABLE LOCKING PAWL



MATERIAL : CASTING



QV589
50MM FRAME & SHUTTER



MATERIAL : NYLON



QV539 ZINC / **QV572** BLACK
50MM OPENABLE STRIKER



MATERIAL : CASTING



QV566
50MM ADJUSTABLE PAWL LOCKING STRIKER



MATERIAL : CASTING

FINISH : MILL

QV776 / QV777 / QV778
FREEZE ARM



MODEL NO.	LENGTH
QV776	8"
QV777	10"
QV778	12"

MATERIAL : SS

FINISH : MILL

QV1001 TO QV1009
FRICTION ARM



MATERIAL : SS

FINISH : MILL

MODEL NO.	LENGTH
QV1001	8"
QV1002	10"
QV1003	12"
QV1004	14"
QV1005	16"
QV1006	18"
QV1007	20"
QV1008	22"
QV1009	24"

QV751 TO QV755
SHUT BOLT



MATERIAL : ALUMINIUM

MODEL NO.	LENGTH
QV751	6"
QV752	8"
QV753	10"
QV754	12"
QV755	20"