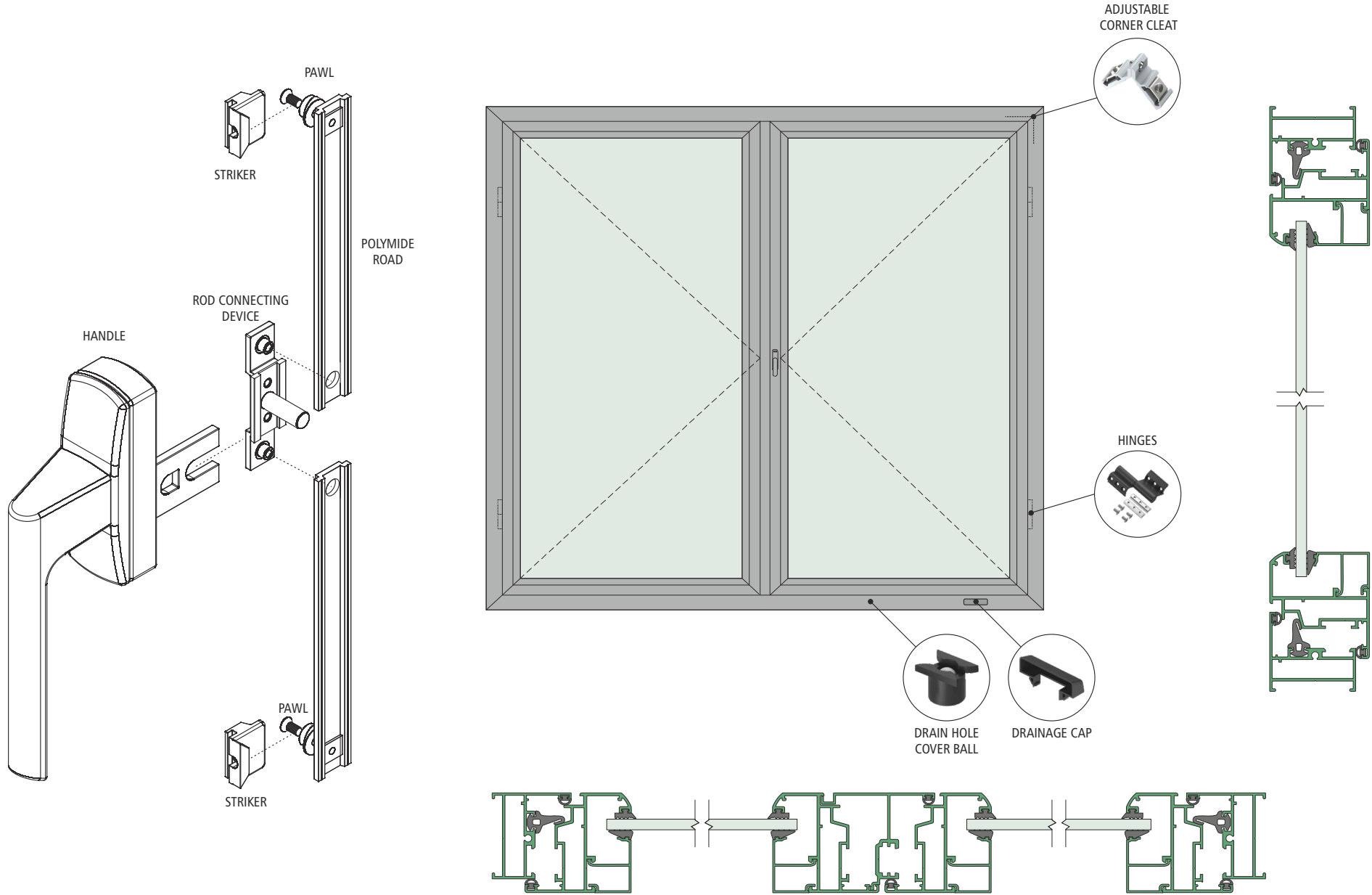


**50MM** CASEMENT WINDOW  
HARDWARE

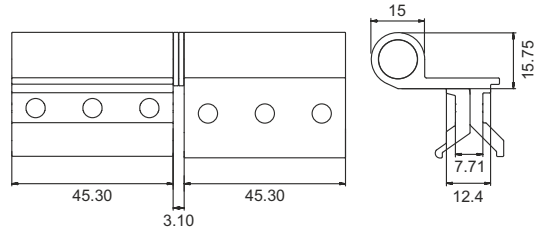
50MM CASMENT WINDOW HARDWARE APPLICATION



**50MM** CASEMENT WINDOW  
HARDWARE



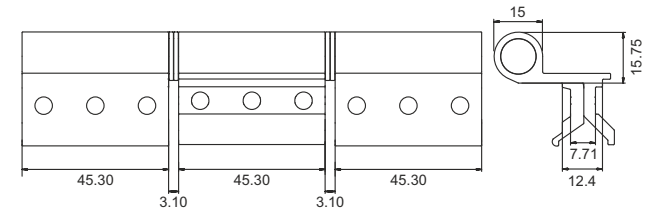
**QV451** BLACK /**QV452** WHITE  
50MM CASEMENT BUTT HINGE 2-WINGS



MATERIAL : ALUMINIUM



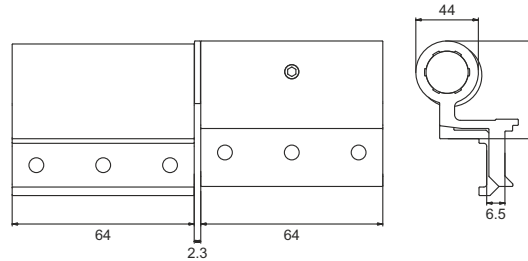
**QV453** BLACK /**QV454** WHITE  
50MM CASEMENT BUTT HINGE 3-WINGS



MATERIAL : ALUMINIUM



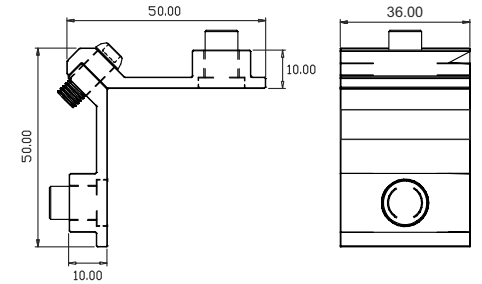
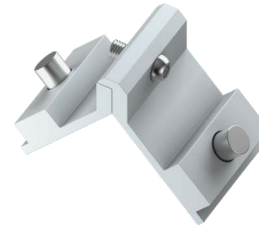
**QV455** BLACK /**QV456** WHITE  
50MM DOOR HINGE WITHOUT SECURITY KIT



MATERIAL : ALUMINIUM



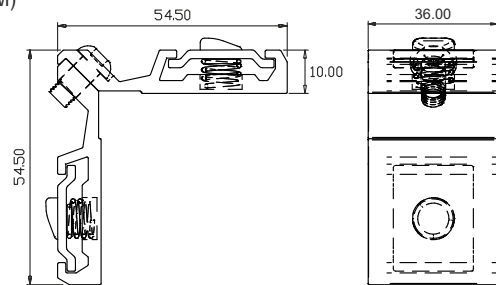
**QV208**  
10X36MM ADJUSTABLE CORNER CLEAT



MATERIAL : ALUMINIUM

FINISH : MILL

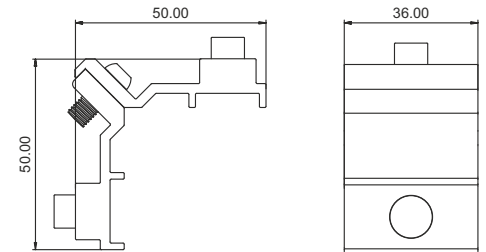
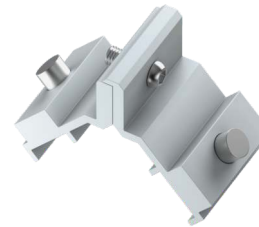
**QV209**  
10X36MM ADJUSTABLE CORNER CLEAT (PREMIUM)



MATERIAL : ALUMINIUM

FINISH : MILL

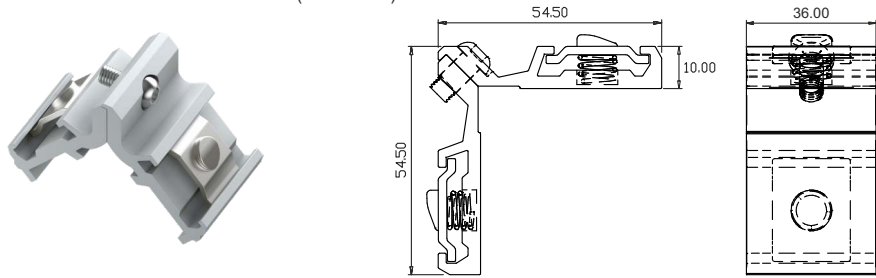
**QV217**  
14X36MM ADJUSTABLE CORNER CLEAT



MATERIAL : ALUMINIUM

FINISH : MILL

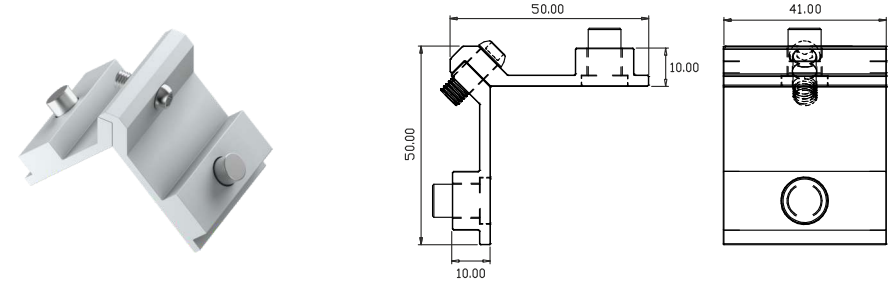
**QV224**  
14X36MM ADJUSTABLE CORNER CLEAT (PREMIUM)



MATERIAL : ALUMINIUM

FINISH : MILL

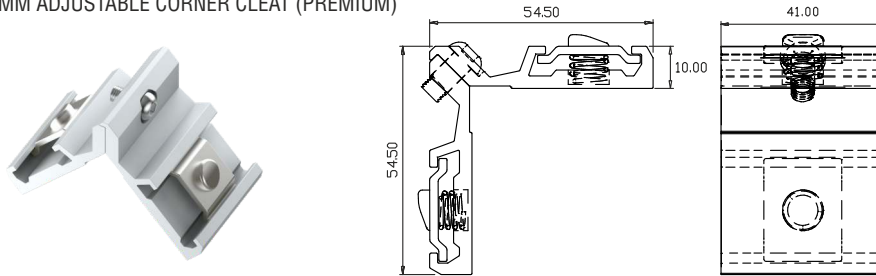
**QV210**  
10X41MM ADJUSTABLE CORNER CLEAT



MATERIAL : ALUMINIUM

FINISH : MILL

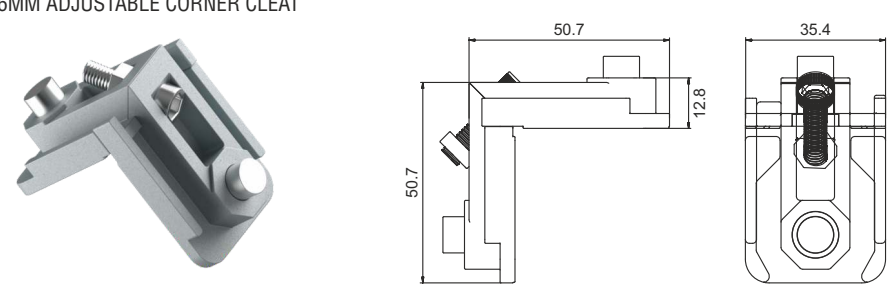
**QV211**  
10X41MM ADJUSTABLE CORNER CLEAT (PREMIUM)



MATERIAL : ALUMINIUM

FINISH : MILL

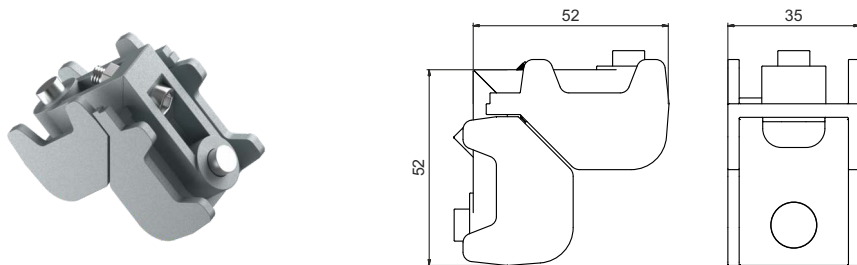
**QV222**  
14X36MM ADJUSTABLE CORNER CLEAT



MATERIAL : CASTING

FINISH : MILL

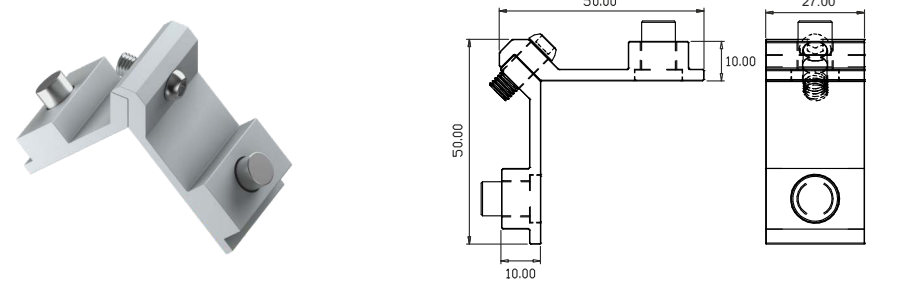
**QV223**  
27X35MM ADJUSTABLE CORNER CLEAT



MATERIAL : CASTING

FINISH : MILL

**QV206**  
10X27MM ADJUSTABLE CORNER CLEAT



MATERIAL : ALUMINIUM

FINISH : MILL

**50MM** CASEMENT WINDOW  
HARDWARE



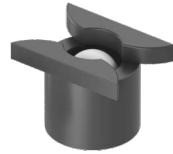
**QV519** BLACK / **QV520** WHITE  
WATER DRAINAGE CAP WITHOUT  
WOOVER PLATE



MATERIAL : NYLON



**QV521**  
DRAIN HOLE COVER BALL



MATERIAL : NYLON



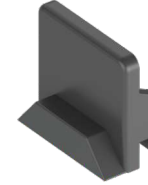
**QV522**  
DRAIN CAPSULE SLOT COVER



MATERIAL : NYLON



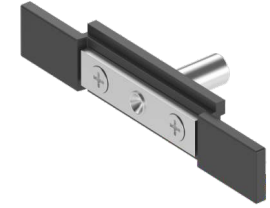
**QV539** ZINC / **QV572** BLACK  
50MM OPENABLE STRIKER



MATERIAL : CASTING



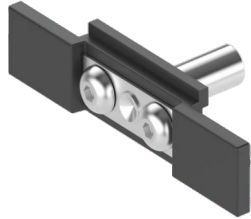
**QV552**  
ROD CONNECTING DEVICE  
(STANDARD)



MATERIAL : CASTING



**QV553**  
ROD CONNECTING DEVICE  
(PREMIUM)



MATERIAL : CASTING



**QV554**  
SS - 304 GRADE FORK CONNECTOR PIN



MATERIAL : SS

FINISH : MILL

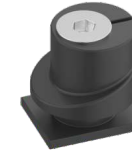
**QV555** ZINC / **QV597** BLACK  
6MM LOCKING PAWL



MATERIAL : CASTING



**QV556** ZINC / **QV591** BLACK  
8MM ADJUSTABLE LOCKING PAWL



MATERIAL : CASTING



**QV566**  
50MM ADJUSTABLE PAWL LOCKING STRIKER



MATERIAL : CASTING

FINISH : MILL

**QV569** BLACK / **QV599** WHITE  
WATER DRAINAGE CAP WITH  
WOOVER PLATE



MATERIAL : NYLON



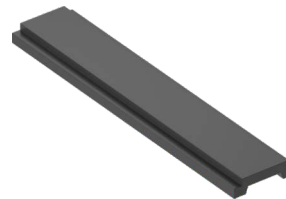
**QV589**  
50MM FRAME & SHUTTER



MATERIAL : NYLON



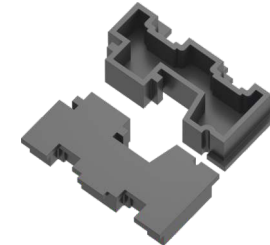
**QV901**  
15/20 EURO POLYIMIDE ROAD



MATERIAL : NYLON



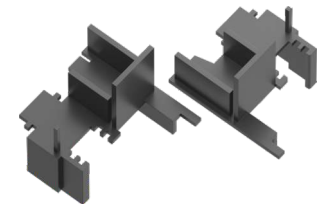
**QV917**  
DOOR BOTTOM CAP ADAPTOR



MATERIAL : NYLON



**QV918**  
FLYING MULLION CAP



MATERIAL : NYLON



**50MM** CASEMENT WINDOW  
HARDWARE

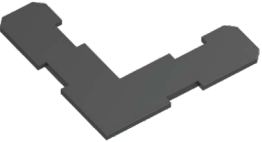


**QV916**  
18.4MM SS CHEVERON SS-304 GRADE



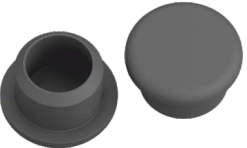
MATERIAL : SS FINISH : MILL

**QV502**  
14MM NYLON CHEVERON



MATERIAL : NYLON B

**QV518** BLACK / **QV524** WHITE  
11.5MM HOLE CAP



MATERIAL : NYLON W B

**QV776 / QV777 / QV778**  
FREEZE ARM



MATERIAL : SS FINISH : MILL

MODEL NO.	LENGTH
<b>QV776</b>	8"
<b>QV777</b>	10"
<b>QV778</b>	12"

**QV1001 TO QV1009**  
FRICTION ARM



MATERIAL : SS FINISH : MILL

MODEL NO.	LENGTH
<b>QV1001</b>	8"
<b>QV1002</b>	10"
<b>QV1003</b>	12"
<b>QV1004</b>	14"
<b>QV1005</b>	16"
<b>QV1006</b>	18"
<b>QV1007</b>	20"
<b>QV1008</b>	22"
<b>QV1009</b>	24"