

**CUSTOMISED
HARDWARE PRODUCTS**

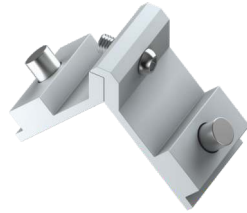


QV214
90° CORNER CLEAT (22MM) STANDARD



MATERIAL : ALUMINIUM FINISH : MILL

QV207
10X31MM ADJUSTABLE CORNER CLEAT



MATERIAL : ALUMINIUM FINISH : MILL

QV225
10X28.5 AD. CORNER CLEAT (PREMIUM)



MATERIAL : ALUMINIUM FINISH : MILL

QV605
ONE WAY CONNECTING DEVICE KNOB



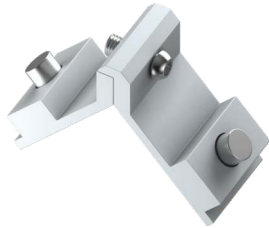
MATERIAL : CASTING

QV126
ROLLER FOR MINIMAL SERIES



BODY : ALUMINIUM
WHEELS : SS

QV227
10X28.5MM ADJUSTABLE CORNER CLEAT STANDARD



MATERIAL : ALUMINIUM FINISH : MILL

QV127
ROLLER FOR MINIMAL SERIES



BODY : ALUMINIUM
WHEELS : SS

QV919
CORNER BRACKET



MATERIAL : MS

QV109
15X24X150 SS BODY DOUBLE ADJUSTABLE ROLLER - U GROOVE



CAPACITY : 120KG/PAIR
BODY : SS
WHEELS : NYLON

QV110
15X23X238 SS BODY FOUR ADJUSTABLE ROLLER - U GROOVE



CAPACITY : 180KG/PAIR
BODY : SS
WHEELS : NYLON

QV114
15X17X145 SS BODY 2 WHEEL ADJUSTABLE ROLLER - U GROOVE



CAPACITY : 120KG/PAIR
BODY : SS
WHEELS : NYLON

QV117
15X20X90 SS BODY ONE WHEEL ADJUSTABLE ROLLER - U GROOVE



CAPACITY : 60KG/PAIR
BODY : SS
WHEELS : NYLON

QV118
15X20X145 SS BODY DOUBLE WHEEL ADJUSTABLE ROLLER - U GROOVE



CAPACITY : 120KG/PAIR
BODY : SS
WHEELS : NYLON

QV119
31MM SS TWO WHEEL ADJUSTABLE ROLLER



CAPACITY : 250KG/PAIR
BODY : ALUMINIUM
WHEELS : SS

QV120
15X17X196 SS BODY FOUR WHEEL ADJUSTABLE ROLLER - U GROOVE



CAPACITY : 180KG/PAIR
BODY : SS
WHEELS : NYLON

**CUSTOMISED
HARDWARE PRODUCTS**



QV923
U FRAME PACKERS (4MM)



MATERIAL : NYLON



QV920
GLASS PACKERS (1MM)



MATERIAL : NYLON



QV921
GLASS PACKERS (2MM)



MATERIAL : NYLON



QV922
GLASS PACKERS (4MM)



MATERIAL : NYLON

