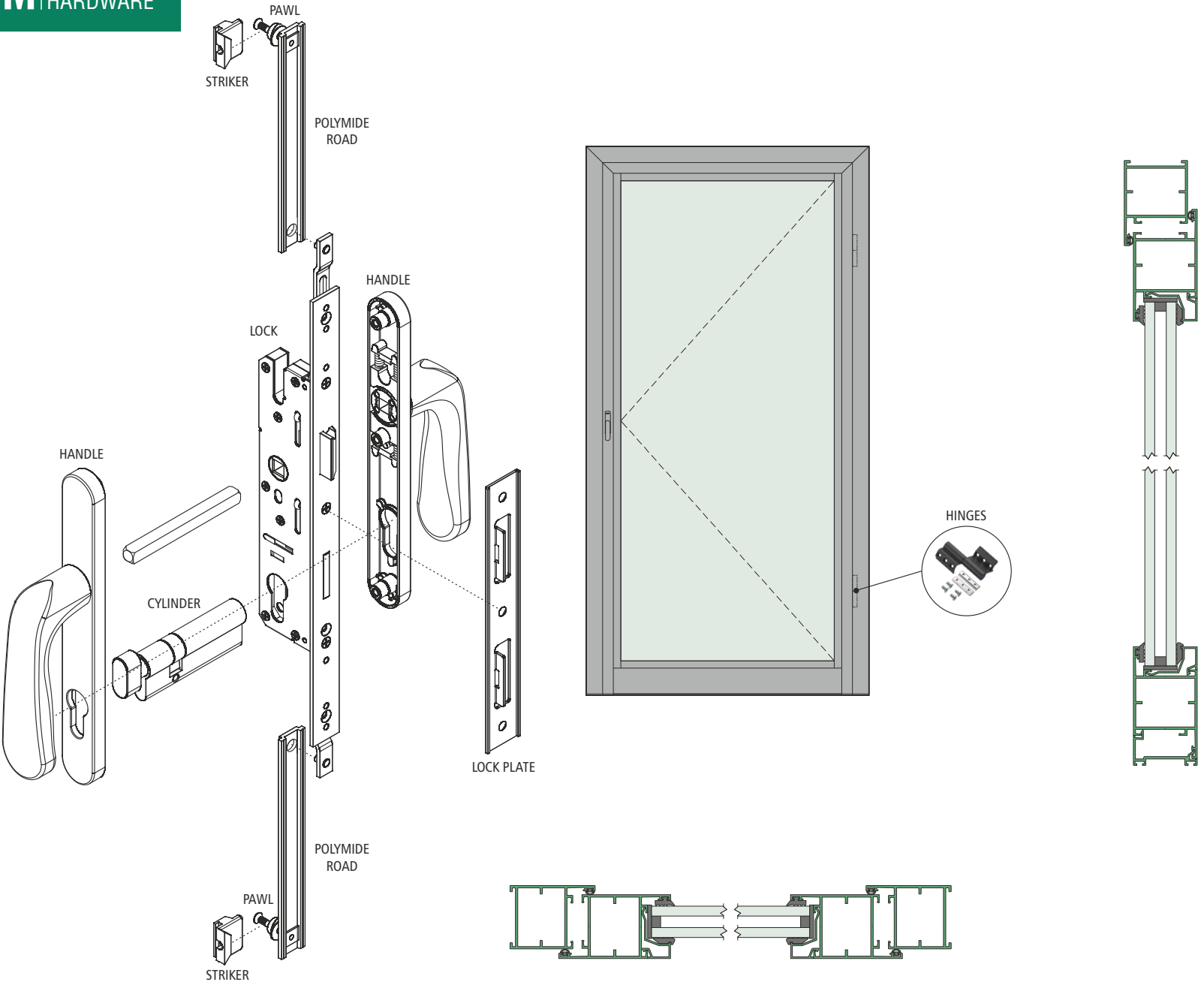


# 40MM DOOR HARDWARE

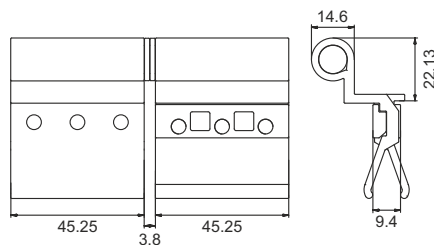
## 40MM DOOR HARDWARE APPLICATION



# 40MM DOOR HARDWARE



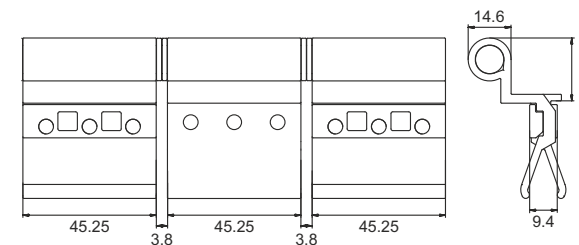
**QV457 BLACK /QV458 WHITE**  
40MM CASEMENT BUTT HINGE 2-WINGS



MATERIAL : ALUMINIUM



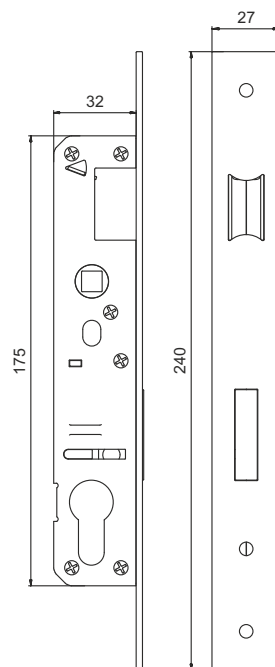
**QV459 BLACK /QV460 WHITE**  
40MM CASEMENT BUTT HINGE 3-WINGS



MATERIAL : ALUMINIUM

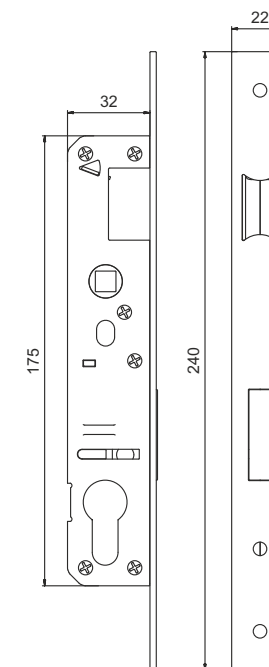


**QV304**  
25MM B/S CASEMENT DOOR LOCK BODY



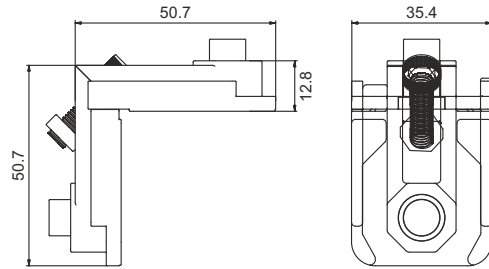
MATERIAL : STEEL

**QV303**  
20MM B/S CASEMENT DOOR LOCK BODY



MATERIAL : STEEL

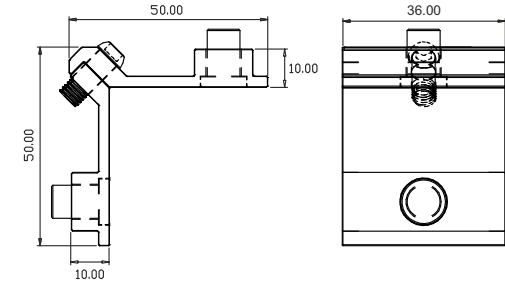
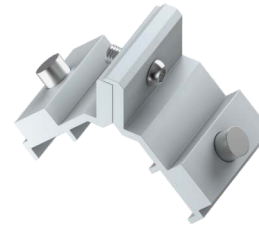
**QV222**  
14X36MM ADJUSTABLE CORNER CLEAT



MATERIAL : CASTING

FINISH : MILL

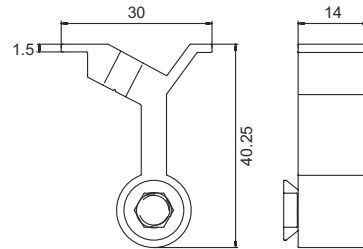
**QV217**  
14X36MM ADJUSTABLE CORNER CLEAT



MATERIAL : ALUMINIUM

FINISH : MILL

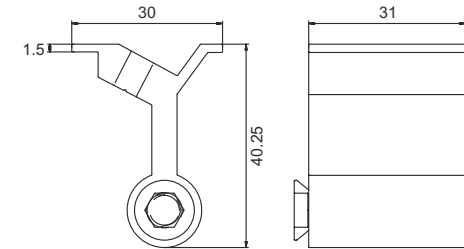
**QV564**  
R40 MULLION CONNECTOR 14MM



MATERIAL : ALUMINIUM

FINISH : MILL

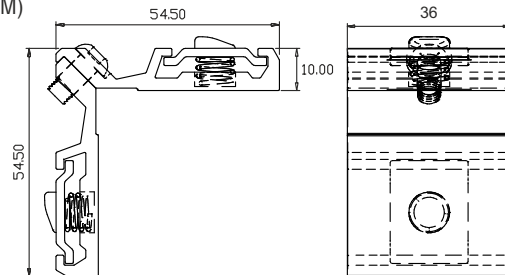
**QV565**  
R40 MULLION CONNECTOR 31MM



MATERIAL : ALUMINIUM

FINISH : MILL

**QV224**  
14X36MM ADJUSTABLE CORNER CLEAT (PREMIUM)



MATERIAL : ALUMINIUM

FINISH : MILL

**QV403**  
60MM CYLINDER BOTH SIDE KEY



MATERIAL : BRASS

**QV404**  
60MM CYLINDER ONE SIDE KEY ONE SIDE NOB

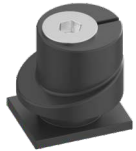


MATERIAL : BRASS

# 40MM DOOR HARDWARE



**QV556 ZINC / QV591 BLACK**  
8MM ADJUSTABLE LOCKING PAWL



MATERIAL : CASTING



**QV569 BLACK / QV599 WHITE**  
WATER DRAINAGE CAP WITH  
WOOVER PLATE



MATERIAL : NYLON

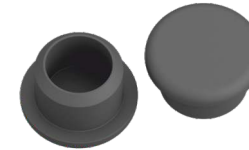


**QV352**  
26X187 PA CENTRE STRICKER



MATERIAL : SS

**QV518 BLACK / QV524 WHITE**  
11.5MM HOLE CAP



MATERIAL : NYLON



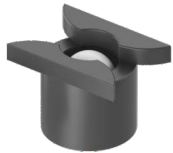
**QV519 BLACK / QV520 WHITE**  
WATER DRAINAGE CAP WITHOUT  
WOOVER PLATE



MATERIAL : NYLON



**QV521**  
DRAIN HOLE COVER BALL



MATERIAL : NYLON



**QV522**  
DRAIN CAPSULE SLOT COVER



MATERIAL : NYLON



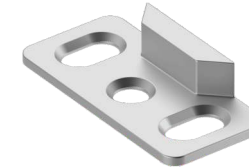
**QV540**  
40MM OPENABLE STRIKER



MATERIAL : CASTING



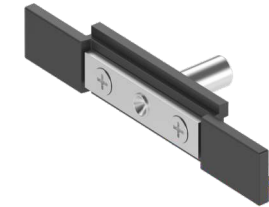
**QV541**  
R40 CASEMENT STRIKER



MATERIAL : CASTING

FINISH : MILL

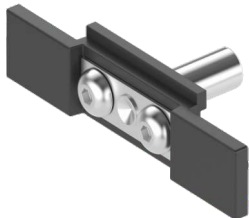
**QV552**  
ROD CONNECTING DEVICE  
(STANDARD)



MATERIAL : CASTING



**QV553**  
ROD CONNECTING DEVICE  
(PREMIUM)



MATERIAL : CASTING



**QV554**  
SS - 304 GRADE FORK CONNECTOR PIN



MATERIAL : SS

FINISH : MILL

**QV589**  
50MM FRAME & SHUTTER



MATERIAL : NYLON



**QV709 TO QV716**  
ALUMINIUM CASEMENT ESPAG-2P



MODEL NO.	LENGTH
<b>QV709</b>	400MM
<b>QV710</b>	600MM
<b>QV711</b>	800MM
<b>QV712</b>	1000MM
<b>QV713</b>	1200MM
<b>QV714</b>	1400MM
<b>QV715</b>	1600MM
<b>QV716</b>	1800MM

MATERIAL : ALUMINIUM

FINISH : MILL

**QV751 TO QV755**  
SHUT BOLT



MODEL NO.	LENGTH
<b>QV751</b>	6"
<b>QV752</b>	8"
<b>QV753</b>	10"
<b>QV754</b>	12"
<b>QV755</b>	20"

MATERIAL : ALUMINIUM

