


Qvista[™]

ALUMINIUM DOORS & WINDOWS HARDWARE

www.qvista.co.in

VERSION 1.0



About Us

QVISTA is a leading manufacturer & exporter of Door & Window Hardware based in India. We specialise in providing high-quality and innovative system window hardware solutions keeping in mind recent trends in visibility & utility.

Our product lineup includes a range of hardware components designed to enhance the functionality, durability, and aesthetics of door & windows in residential, commercial, and industrial settings. All our products are backed up with requisite certifications from internal & external laboratories. Customisation with fast delivery & cost effectiveness makes us proud in the market.

Our target market includes builders, fabricators, architects, and consultants who prioritize quality, reliability, and design excellence in their window hardware choices.

QVISTA stands out in the market for its commitment to quality craftsmanship, cutting-edge technology, and personalised customer service. We take pride in offering products that are not only highly functional but also visually appealing and built to last.



INDEX

HANDLE | SINGLE & MULTI
POINT LOCKING **05**

37MM | SLIDING WINDOW
HARDWARE **43**

29MM | SLIDING WINDOW
HARDWARE **11**

32MM | CASEMENT
HARDWARE **49**

25MM | SLIDING WINDOW
HARDWARE **19**

40MM | CASEMENT WINDOW
HARDWARE **52**

26MM | SLIDING WINDOW
HARDWARE **24**

40MM | DOOR
HARDWARE **57**

27MM | SLIDING WINDOW
HARDWARE **30**

50MM | CASEMENT WINDOW
HARDWARE **63**

35MM | SLIDING WINDOW
HARDWARE **37**

50MM | DOOR
HARDWARE **69**

**CUSTOMISED
HARDWARE PRODUCTS** **76**



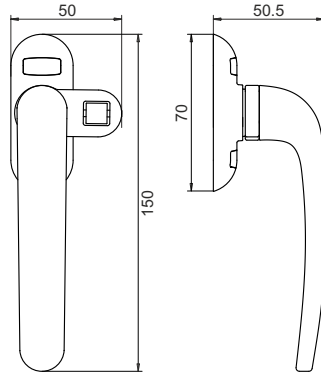
QUALITY THAT LASTS



HANDLE SINGLE POINT LOCKING



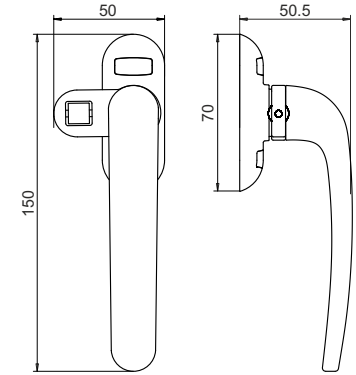
QV011
200MM QVISTA ECO SINGLE POINT
LOCKING HANDLE LEFT



MATERIAL : ALUMINIUM



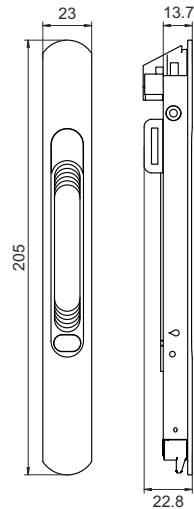
QV012
200MM QVISTA ECO SINGLEPOINT
LOCKING HANDLE RIGHT



MATERIAL : ALUMINIUM



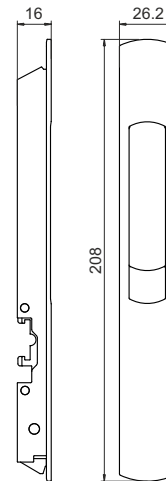
QV002
QVISTA MAX AUTO SINGL EPOINT
CONCEALED LOCK 195MM



MATERIAL : ALUMINIUM



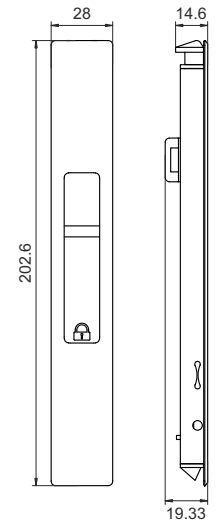
QV003
QVISTA ULTRA AUTO SINGLE POINT
CONCEALED LOCK 195MM



MATERIAL : ALUMINIUM



QV004
QVISTA ULTRA MAX AUTO SINGLE POINT
CONCEALED LOCK 203MM



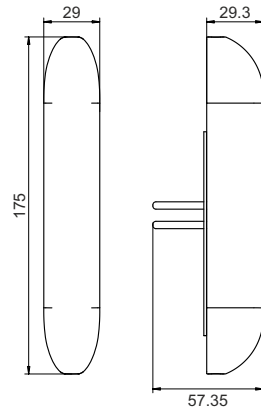
MATERIAL : ALUMINIUM



HANDLE MULTI POINT LOCKING



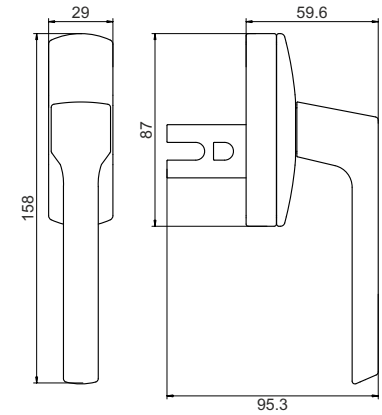
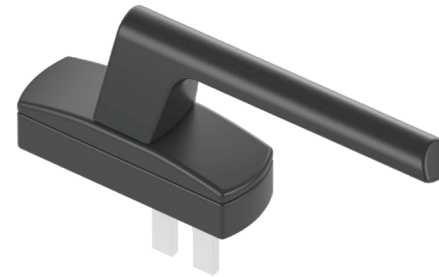
QV001
QVISTA METRO HANDLE 7 INCH
MULTIPOINT LOCKING



MATERIAL : ALUMINIUM



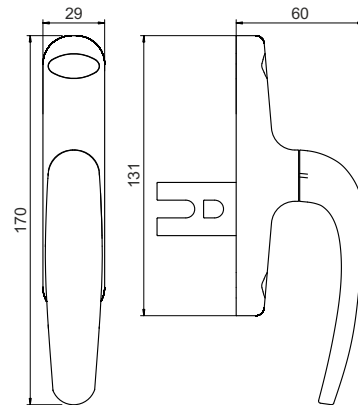
QV005
QVISTA KREON HANDLE



MATERIAL : ALUMINIUM



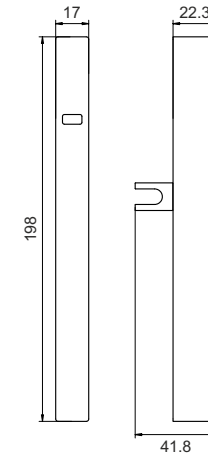
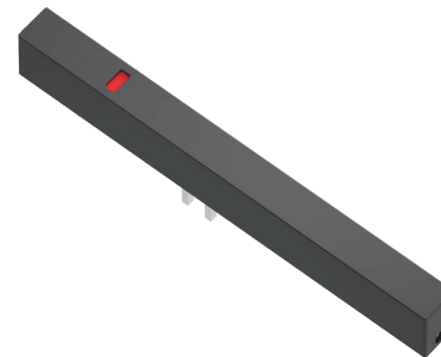
QV006
QVISTA ULTRA CREMONE HANDLE



MATERIAL : ALUMINIUM



QV007
QVISTA METRO MAX HANDLE MULTIPOINT LOCKING
SYSTEM UP & DOWN MECHANISM 198 MM



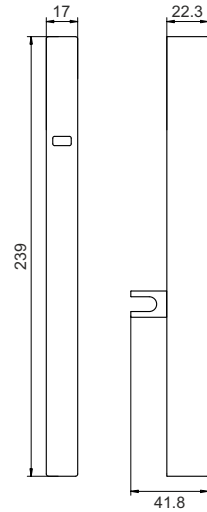
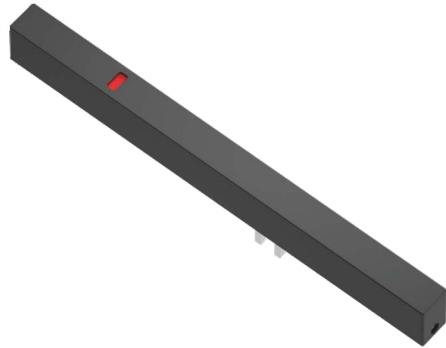
MATERIAL : ALUMINIUM



HANDLE MULTI POINT LOCKING



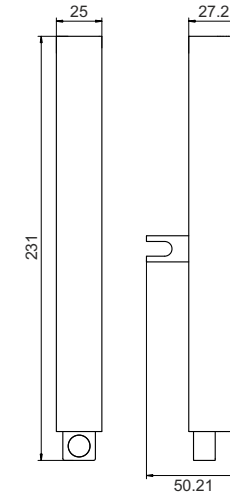
QV008
QVISTA METRO MAX PRO HANDLE MULTIPOINT
LOCKING SYSTEM UP & DOWN MECHANISM 239 MM



MATERIAL : ALUMINIUM



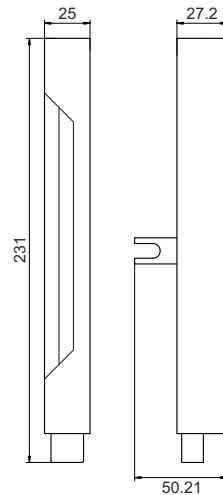
QV009
QVISTA SANTINO HANDLE MULTIPOINT LOCKING
UP & DOWN BUTTON 217 MM



MATERIAL : ALUMINIUM



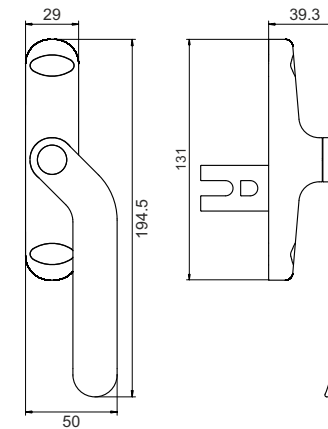
QV010
QVISTA SANTINO PRO HANDLE MULTIPOINT LOCKING
PUSH UP & DOWN BUTTON 217 MM



MATERIAL : ALUMINIUM



QV015
QVISTA ULTRA CREMONE SHORT
NECK HANDLE - LEFT



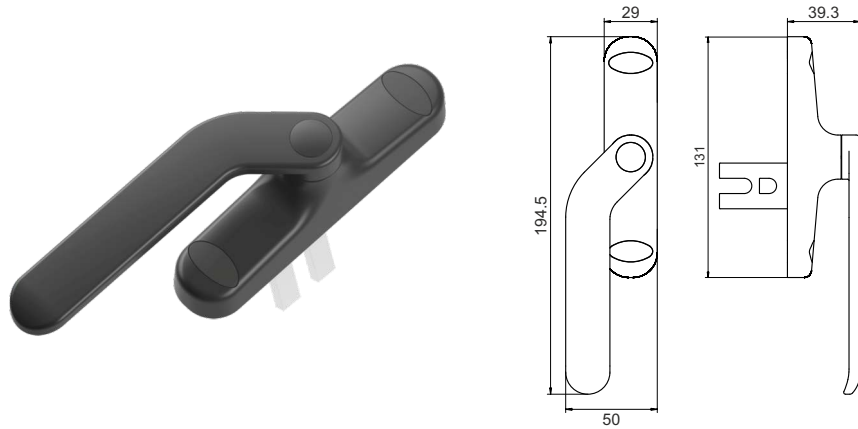
MATERIAL : ALUMINIUM



HANDLE MULTI POINT LOCKING



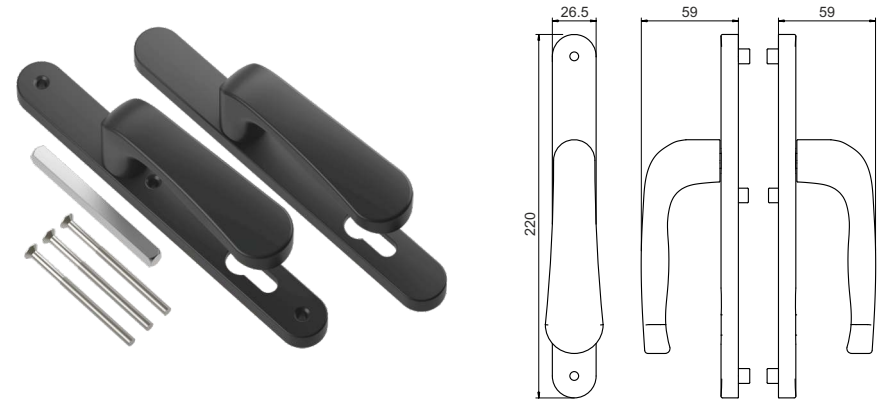
QV016
QVISTA ULTRA CREMONE SHORT
NECK HANDLE - RIGHT



MATERIAL : ALUMINIUM



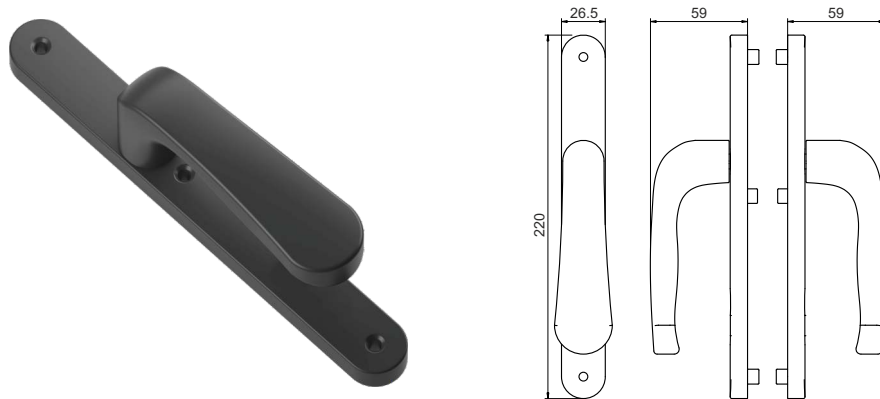
QV017
QVISTA LAVISH CASEMENT
DOOR HANDLE



MATERIAL : ALUMINIUM



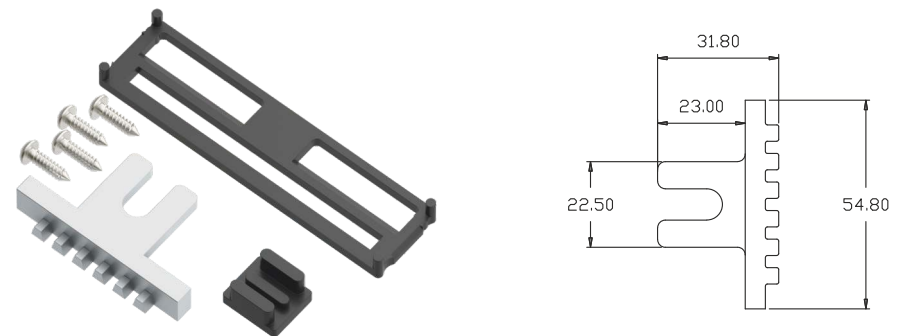
QV018
QVISTA LUXE CASEMENT
DOOR HANDLE



MATERIAL : ALUMINIUM



QV051
20MM FORK KIT FOR ULTRA CREMONE HANDLE

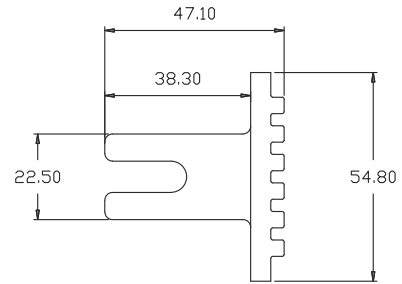
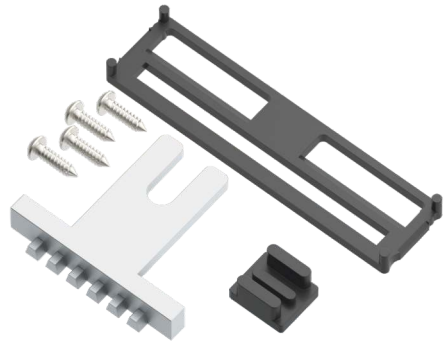


MATERIAL : CASTING

FINISH : MILL

HANDLE MULTI POINT LOCKING

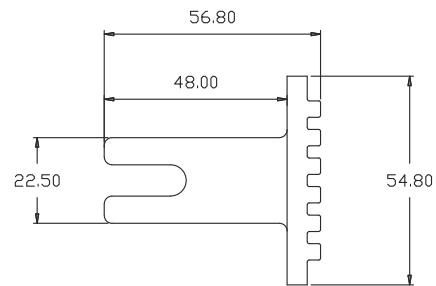
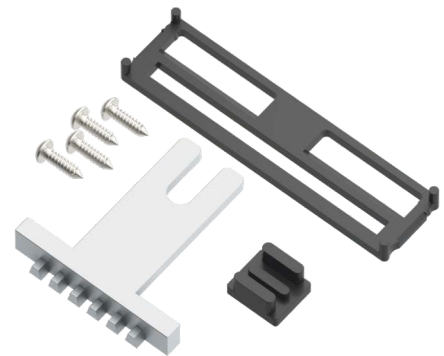
QV052 40MM FORK KIT FOR ULTRA CREMONE HANDLE



FINISH : MILL

MATERIAL : CASTING

QV053 50MM FORK KIT FOR ULTRA CREMONE HANDLE



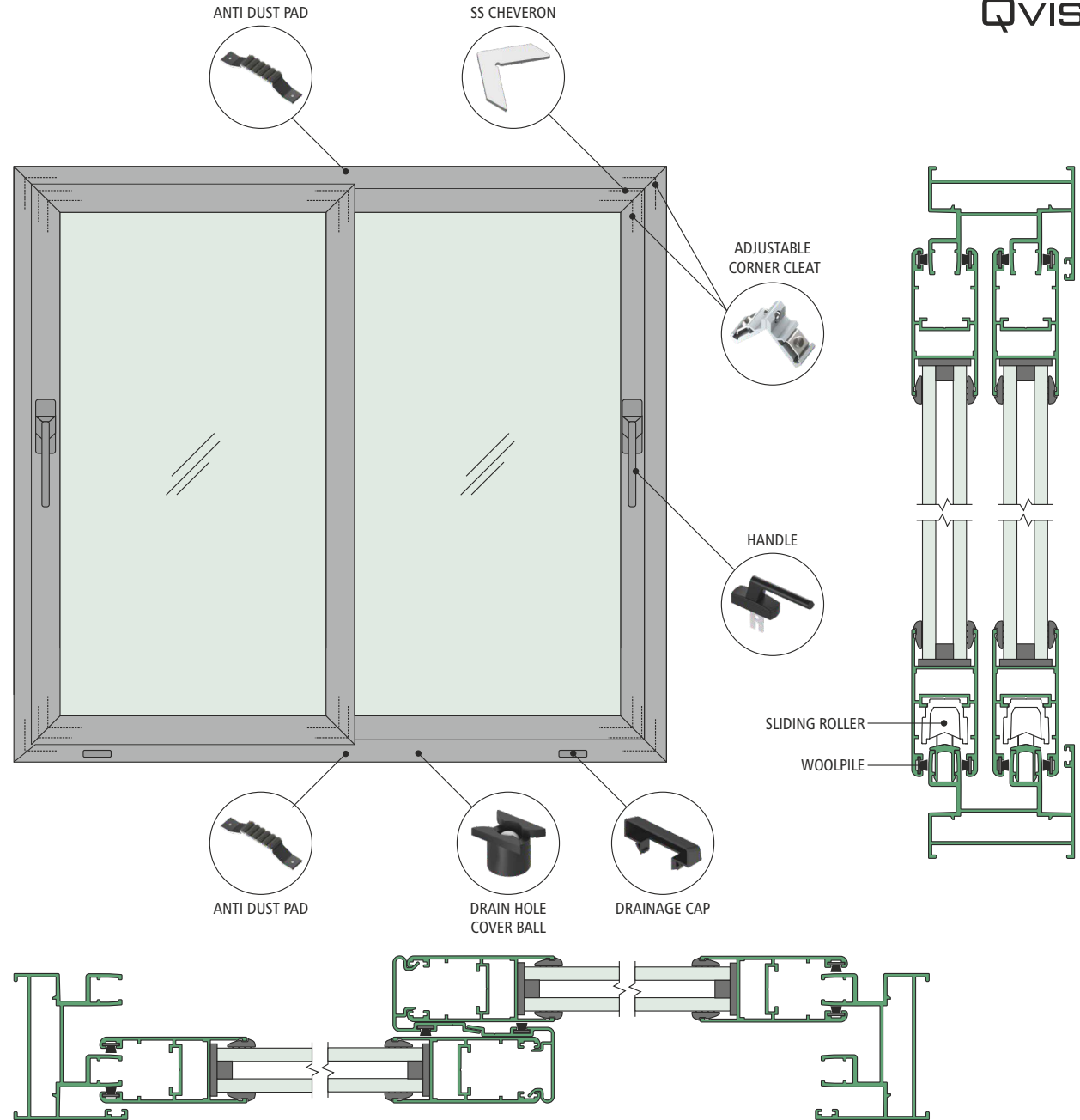
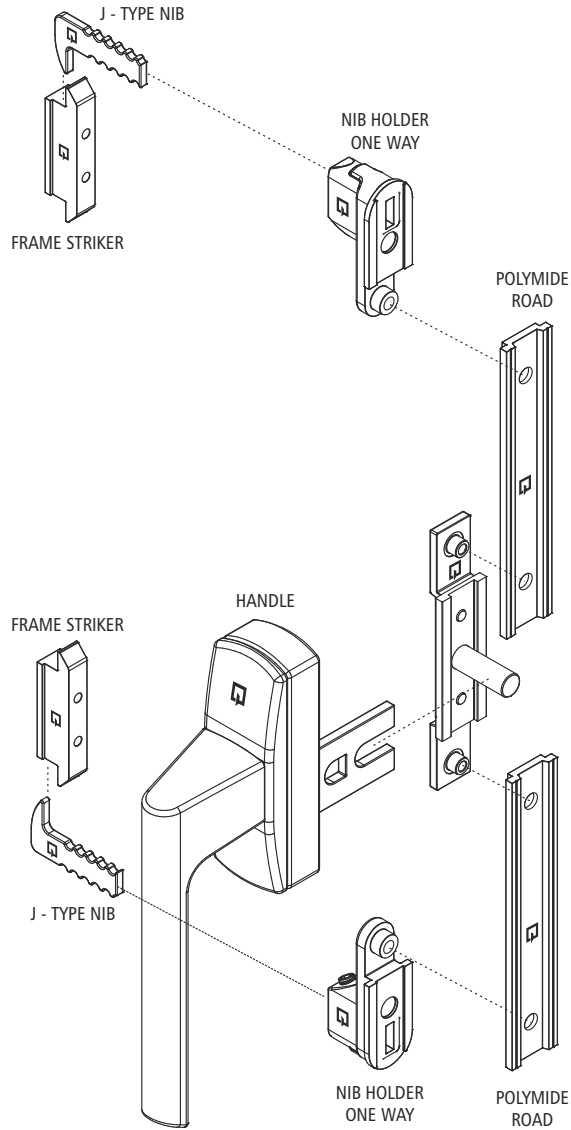
FINISH : MILL

MATERIAL : CASTING

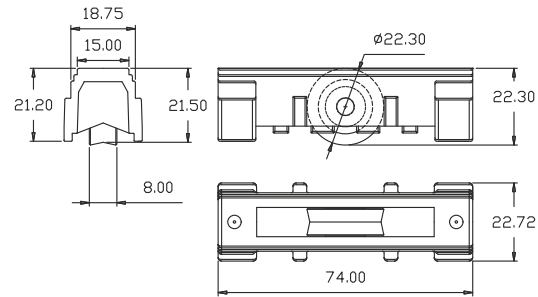
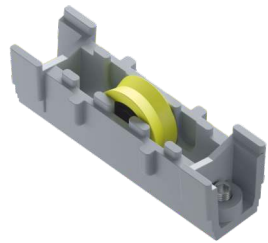


PRECISION-CRAFTED HARDWARE



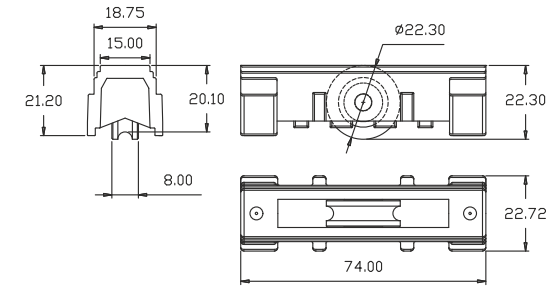
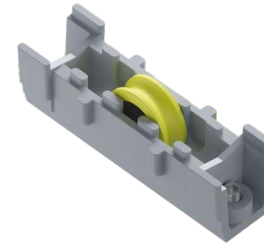


QV105
FIXED ROLLER WITH BEARING (V GROOVE)



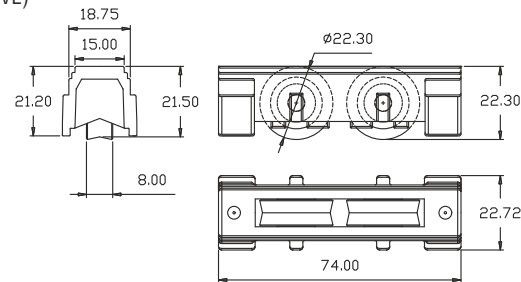
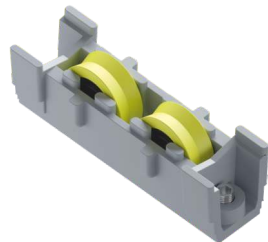
CAPACITY : 40KG/PAIR
BODY : PLASTIC
WHEELS : NYLON

QV106
FIXED ROLLER WITH BEARING (U GROOVE)



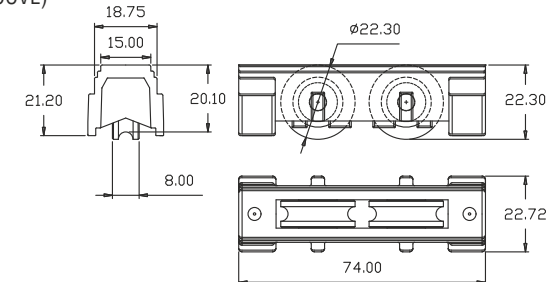
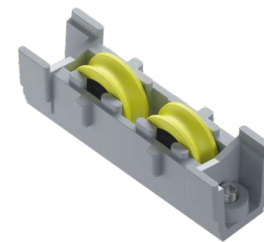
CAPACITY : 40KG/PAIR
BODY : PLASTIC
WHEELS : NYLON

QV107
DOUBLE FIXED ROLLER WITH BEARING (V GROOVE)



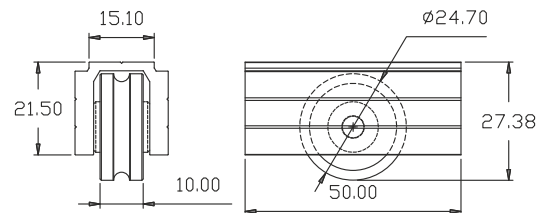
CAPACITY : 60KG/PAIR
BODY : PLASTIC
WHEELS : NYLON

QV108
DOUBLE FIXED ROLLER WITH BEARING (U GROOVE)



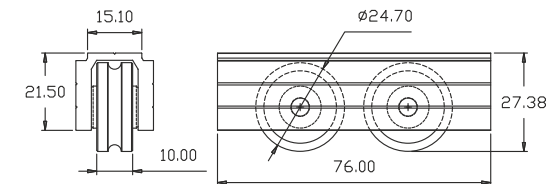
CAPACITY : 60KG/PAIR
BODY : PLASTIC
WHEELS : NYLON

QV111
ONE SS WHEEL ROLLER (U GROOVE)



CAPACITY : 150KG/PAIR
BODY : ALUMINIUM
WHEELS : SS

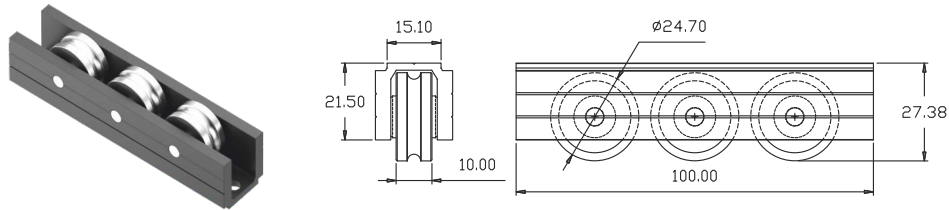
QV112
TWO SS WHEEL ROLLER (U GROOVE)



CAPACITY : 250KG/PAIR
BODY : ALUMINIUM
WHEELS : SS

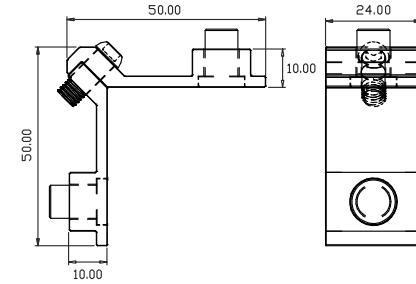


QV113
THREE SS WHEEL ROLLER (U GROOVE)



CAPACITY : 350KG/PAIR
BODY : ALUMINIUM
WHEELS : SS

QV203
10X24MM ADJUSTABLE CORNER CLEAT

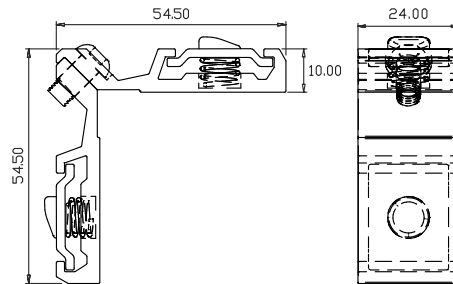


B

MATERIAL : ALUMINIUM

FINISH : MILL

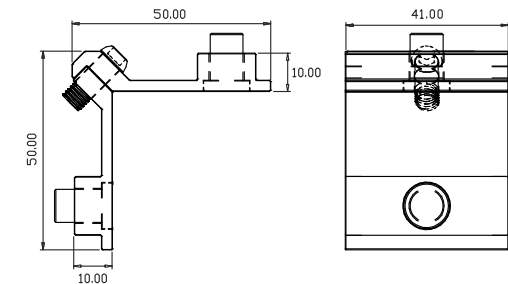
QV204
10X24MM ADJUSTABLE CORNER CLEAT (PREMIUM)



MATERIAL : ALUMINIUM

FINISH : MILL

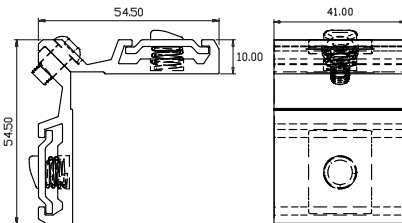
QV210
10X41MM ADJUSTABLE CORNER CLEAT



MATERIAL : ALUMINIUM

FINISH : MILL

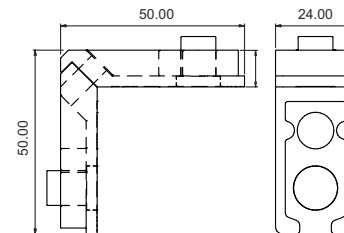
QV211
10X41MM ADJUSTABLE CORNER CLEAT (PREMIUM)



MATERIAL : ALUMINIUM

FINISH : MILL

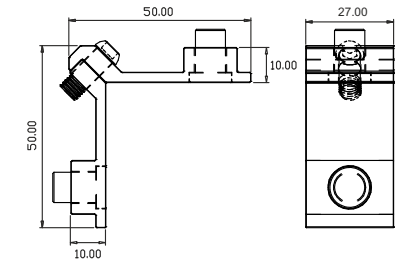
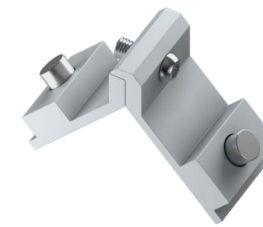
QV221
10X24MM ADJUSTABLE CORNER CLEAT



MATERIAL : CASTING

FINISH : MILL

QV206
10X27MM ADJUSTABLE CORNER CLEAT



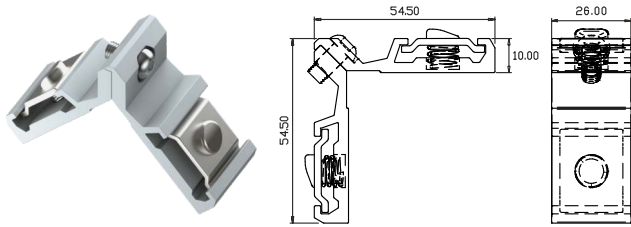
MATERIAL : ALUMINIUM

FINISH : MILL

29MM SLIDING WINDOW HARDWARE



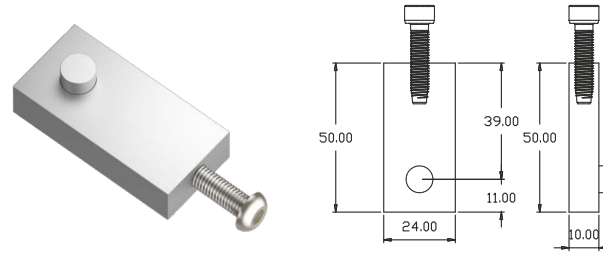
QV205
10X26MM ADJUSTABLE CORNER CLEAT (PRIMIUM)



MATERIAL : ALUMINIUM

FINISH : MILL

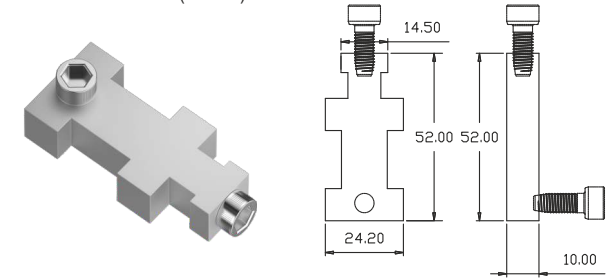
QV215
90 DEG CORNER CLEAT (24MM) STANDARD



MATERIAL : ALUMINIUM

FINISH : MILL

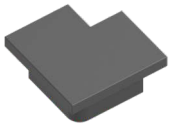
QV216
90 DEG CORNER CLEAT (24MM) PREMIUM



MATERIAL : ALUMINIUM

FINISH : MILL

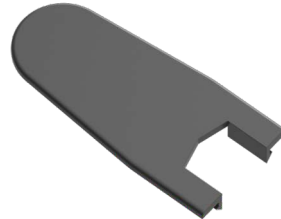
QV501
11MM NYLON CHEVERON



MATERIAL : NYLON



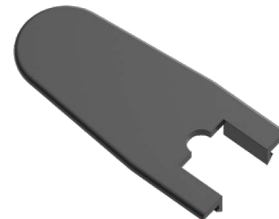
QV503 BLACK / QV592 WHITE
29MM SELF LOCKING INTERLOCK CAP (V GROOVE)



MATERIAL : NYLON



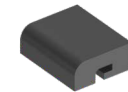
QV504 BLACK / QV593 WHITE
29MM SELF LOCKING INTERLOCK CAP (U GROOVE)



MATERIAL : NYLON



QV509 BLACK / QV594 WHITE
VENT GUIDE



MATERIAL : NYLON



QV515 BLACK / QV529 WHITE
BUFFER BUMP STOPPER



MATERIAL : NYLON



QV516
ANTILIFT WITH BUMP STOPPER



MATERIAL : NYLON



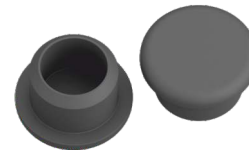
QV517
EURO GROOVE ANTILIFT WITH BUMP STOPPER



MATERIAL : NYLON



QV518 BLACK / QV524 WHITE
11.5MM HOLE CAP



MATERIAL : NYLON



QV519 BLACK / QV520 WHITE
WATER DRAINAGE CAP WITHOUT WOOVER PLATE



MATERIAL : NYLON



QV606 BLACK / QV607 WHITE
BUFFER BUMP STOPPER (U&V-GROOVE)



MATERIAL : NYLON



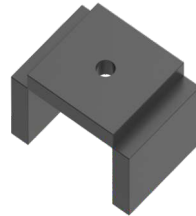
QV522
DRAIN CAPSULE SLOT COVER



MATERIAL : NYLON



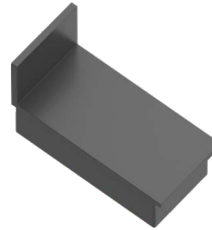
QV523
29MM ROLLER HOUSING



MATERIAL : NYLON



QV526 BLACK / **QV595** WHITE
29MM SLEEK REINFORCEMENT CAP



MATERIAL : NYLON



QV534 BLACK / **QV535** WHITE
BUFFER BUMP STOPPER



MATERIAL : CASTING



QV542 BLACK / **QV596** ZINC
NIB HOLDER TWO WAY



MATERIAL : CASTING



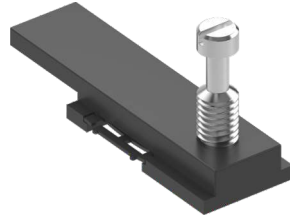
QV543
NIB HOLDER TWO WAY SMALL



MATERIAL : CASTING



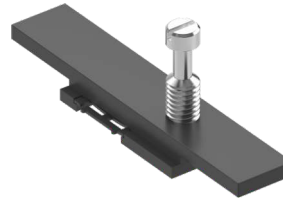
QV544
ONE WAY CONNECTING MULTI
LOCKING DEVICE 25MM (ADJUSTABLE)



MATERIAL : CASTING



QV545
TWO WAY CONNECTING MULTI
LOCKING DEVICE 25MM (ADJUSTABLE)



MATERIAL : CASTING



QV548
SLIDING MULTILOCKING
RECIEVER SCREW



MATERIAL : CASTING



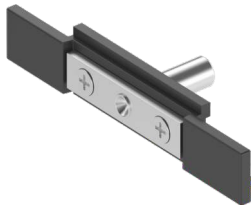
QV549
SLIDING MULTILOCKING
RECIEVER ALLEN-KEY



MATERIAL : CASTING



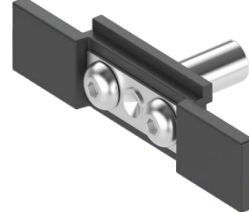
QV552
ROD CONNECTING DEVICE
(STANDARD)



MATERIAL : CASTING



QV553
ROD CONNECTING DEVICE
(PREMIUM)



MATERIAL : CASTING



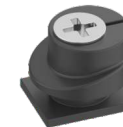
QV554
SS - 304 GRADE FORK CONNECTOR PIN



MATERIAL : SS

FINISH : MILL

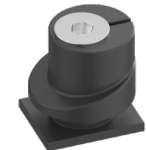
QV555 ZINC / **QV597** BLACK
6MM LOCKING PAWL



MATERIAL : CASTING



QV556 ZINC / **QV591** BLACK
8MM ADJUSTABLE LOCKING PAWL



MATERIAL : CASTING



29MM SLIDING WINDOW HARDWARE



QV557
37MM STREIGHT T- TYPE NIB



MATERIAL : SS FINISH : MILL

QV558
50MM STREIGHT T- TYPE NIB



MATERIAL : SS FINISH : MILL

QV559
37MM STREIGHT J- TYPE NIB



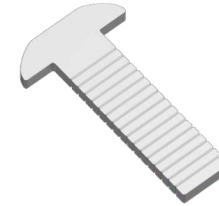
MATERIAL : SS FINISH : MILL

QV560
50MM STREIGHT J- TYPE NIB



MATERIAL : SS FINISH : MILL

QV562
SS BEND NIB T-TYPE



MATERIAL : SS FINISH : MILL

QV569 BLACK / **QV599** WHITE
WATER DRAINAGE CAP WITH
WOOVER PLATE



MATERIAL : NYLON W B

QV573 ZINC / **QV574** BLACK
DUCK FRAME STRIKER



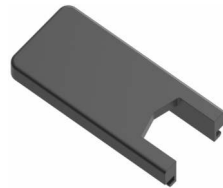
MATERIAL : CASTING Z B

QV575 ZINC / **QV576** BLACK
STRAIGHT FRAME STRIKER



MATERIAL : CASTING Z B

QV585 BLACK / **QV600** WHITE
29MM SERIES INTERLOCK WITH CAP



MATERIAL : NYLON W B

QV587
29MM CHEVERON



MATERIAL : NYLON B

QV510
DISTANCE PICE



MATERIAL : NYLON

QV901
15/20 EURO POLYMIDE ROAD



MATERIAL : NYLON B

QV910
15/20 EURO ALUMINIUM ROD



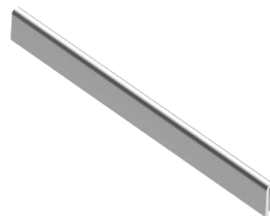
MATERIAL : ALUMINIUM FINISH : MILL

QV902
ALUMINIUM ADAPTER FOR SS RAIL
STANDARD LENGTH 16 FEET



MATERIAL : ALUMINIUM

QV903
6MM X 13MM HEIGHT SS-304
GRADE U RAIL



MATERIAL : SS FINISH : MILL

QV601
ALUMINIUM ANTIDUST PAD (20MM)



MATERIAL : ALUMINIUM B

QV908 (BLACK) / **QV909** (WHITE)
POCKET SLIDING STRIKER



MATERIAL : CASTING W B

29MM SLIDING WINDOW HARDWARE

QV913
4.5MM SS CHEVERON SS-304 GRADE



MATERIAL : SS



QV914
6.5MM SS CHEVERON SS-304 GRADE



MATERIAL : SS



QV915
12MM SS CHEVERON SS-304 GRADE



MATERIAL : SS



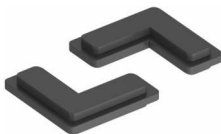
QV581
ONE WAY NIB HOLDER



MATERIAL : CASTING



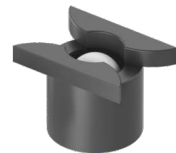
QV586
L - NYLON CHEVERON



MATERIAL : NYLON



QV521
DRAIN HOLE COVER BALL



MATERIAL : NYLON



QV701 TO QV708
ALUMINIUM SLIDING ESPAG-2P



MATERIAL : ALUMINIUM

FINISH : MILL

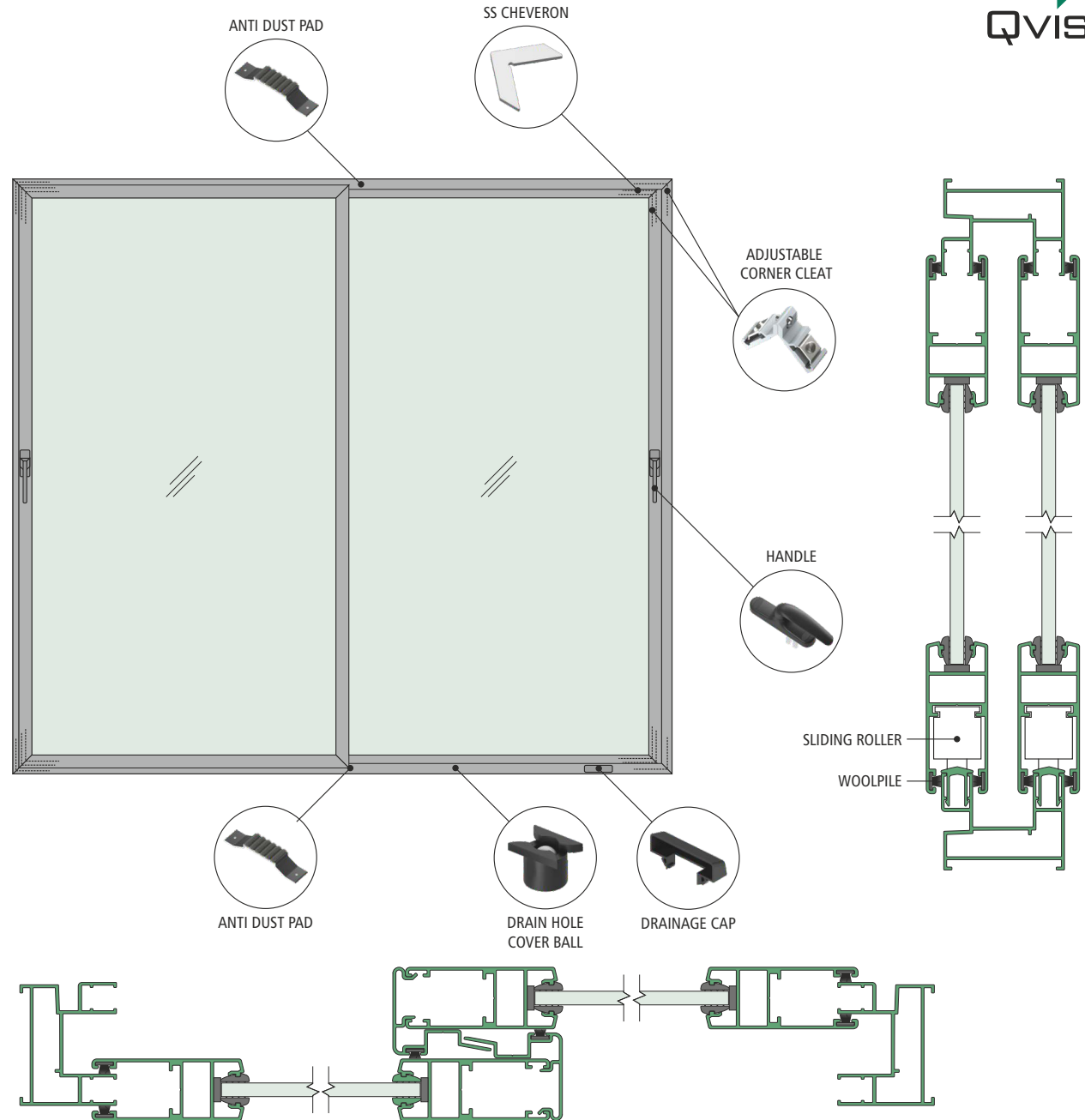
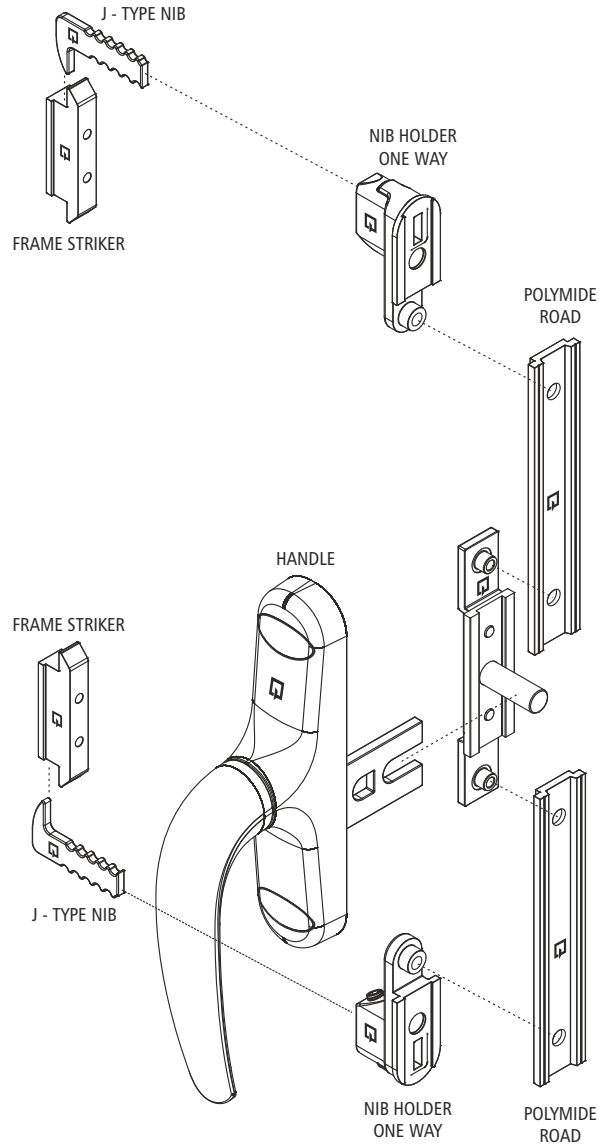
MODEL NO.	LENGTH
QV701	400MM
QV702	600MM
QV703	800MM
QV704	1000MM
QV705	1200MM
QV706	1400MM
QV707	1600MM
QV708	1800MM

INNOVATION AT YOUR WINDOW

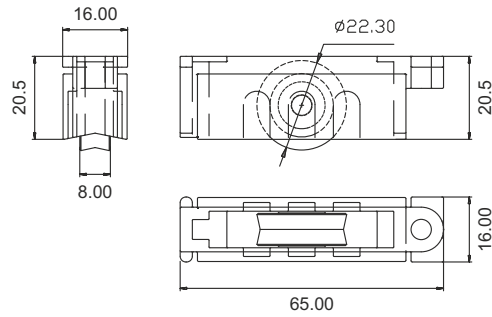
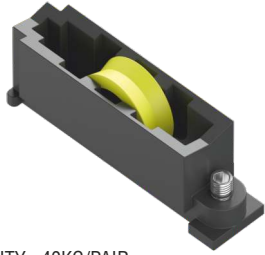


25MM SLIDING WINDOW HARDWARE

25MM SLIDING WINDOW HARDWARE APPLICATION

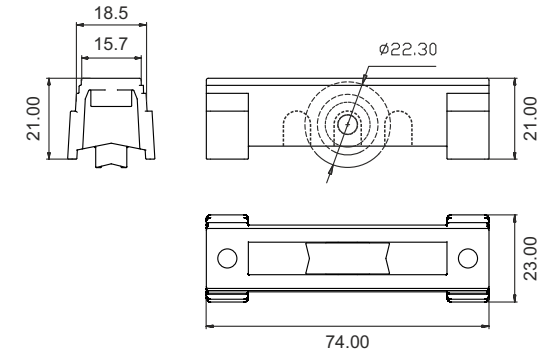


QV123
SINGLE ROLLER (V GROOVE)



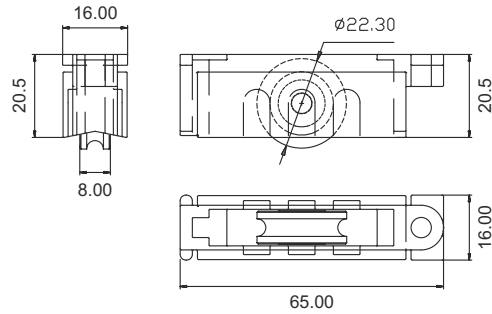
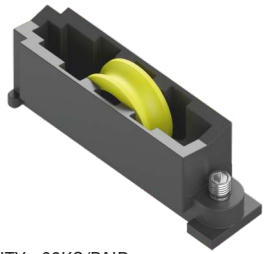
CAPACITY : 40KG/PAIR
BODY : PLASTIC
WHEELS : NYLON

QV124
SINGLE ROLLER (V GROOVE)



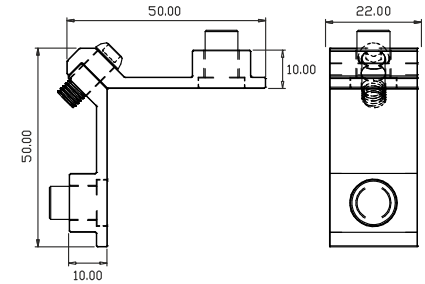
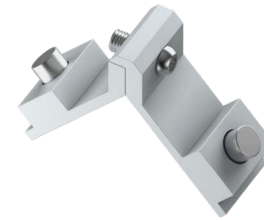
CAPACITY : 40KG/PAIR
BODY : PLASTIC
WHEELS : NYLON

QV125
SINGLE ROLLER (U GROOVE)



CAPACITY : 60KG/PAIR
BODY : PLASTIC
WHEELS : NYLON

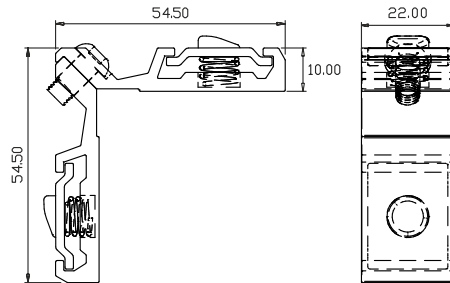
QV201
10X22MM ADJUSTABLE CORNER CLEAT



MATERIAL : ALUMINIUM

FINISH : MILL

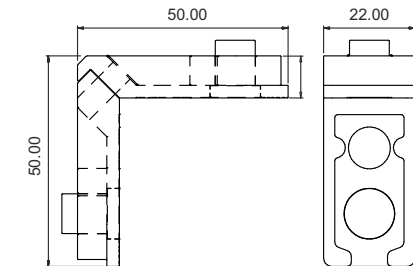
QV202
10X22MM ADJUSTABLE CORNER CLEAT (PREMIUM)



MATERIAL : ALUMINIUM

FINISH : MILL

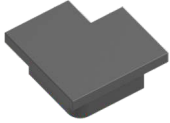
QV220
10X22MM ADJUSTABLE CORNER CLEAT



MATERIAL : CASTING

FINISH : MILL

QV501
11MM NYLON CHEVERON



MATERIAL : NYLON



QV515 BLACK / **QV529** WHITE
BUFFER BUMP STOPPER



MATERIAL : NYLON



QV606 BLACK / **QV607** WHITE
BUFFER BUMP STOPPER
(U&V-GROOVE)



MATERIAL : NYLON



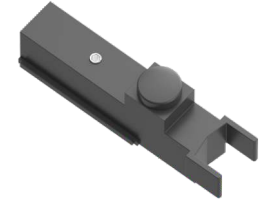
QV516
ANTILIFT WITH BUMP STOPPER



MATERIAL : NYLON



QV517
EURO GROOVE ANTLIFT WITH
BUMP STOPPER



MATERIAL : NYLON



QV519 BLACK / **QV520** WHITE
WATER DRAINAGE CAP WITHOUT
WOOVER PLATE



MATERIAL : NYLON



QV521
DRAIN HOLE COVER BALL



MATERIAL : NYLON



QV522
DRAIN CAPSULE SLOT COVER



MATERIAL : NYLON



QV534 BLACK / **QV535** WHITE
BUFFER BUMP STOPPER



MATERIAL : CASTING



QV542 BLACK / **QV596** ZINC
NIB HOLDER TWO WAY



MATERIAL : CASTING



QV543
NIB HOLDER TWO WAY SMALL



MATERIAL : CASTING



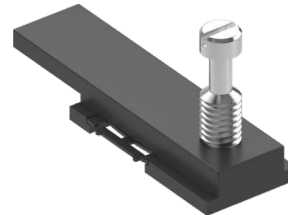
QV581
ONE WAY NIB HOLDER



MATERIAL : CASTING



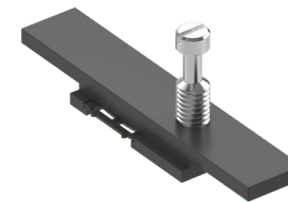
QV544
ONE WAY CONNECTING MULTI
LOCKING DEVICE 25MM (ADJUSTABLE)



MATERIAL : CASTING



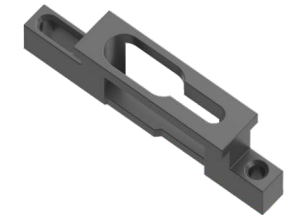
QV545
TWO WAY CONNECTING MULTI
LOCKING DEVICE 25MM (ADJUSTABLE)



MATERIAL : CASTING



QV548
SLIDING MULTILOCKING
RECIEVER SCREW



MATERIAL : CASTING



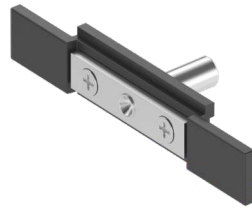
QV549
SLIDING MULTILOCKING
RECIEVER ALLEN-KEY



MATERIAL : CASTING



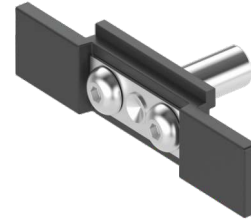
QV552
ROD CONNECTING DEVICE
(STANDARD)



MATERIAL : CASTING



QV553
ROD CONNECTING DEVICE
(PREMIUM)



MATERIAL : CASTING



QV554
SS - 304 GRADE FORK CONNECTOR PIN



MATERIAL : SS

FINISH : MILL

QV557
37MM STREIGHT T- TYPE NIB



MATERIAL : SS

FINISH : MILL

QV558
50MM STREIGHT T- TYPE NIB



MATERIAL : SS

FINISH : MILL

QV559
37MM STREIGHT J- TYPE NIB



MATERIAL : SS

FINISH : MILL

QV560
50MM STREIGHT J- TYPE NIB



MATERIAL : SS

FINISH : MILL

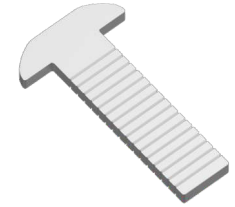
QV561
SS NIB FOR CONCEAL LOCK



MATERIAL : SS

FINISH : MILL

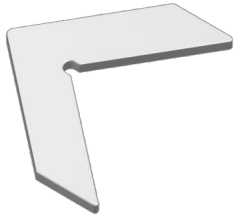
QV562
SS BEND NIB T-TYPE



MATERIAL : SS

FINISH : MILL

QV567
7MM SS CHEVERON



MATERIAL : SS

FINISH : MILL

QV569 BLACK / **QV599** WHITE
WATER DRAINAGE CAP WITH
WOOVER PLATE



MATERIAL : NYLON



QV573 ZINC / **QV574** BLACK
DUCK FRAME STRIKER



MATERIAL : CASTING



QV575 ZINC / **QV576** BLACK
STRAIGHT FRAME STRIKER



MATERIAL : CASTING



QV577 ZINC / **QV578** BLACK
8.5MM SLIM FRAME STRIKER



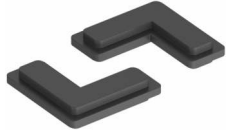
MATERIAL : CASTING



25MM SLIDING WINDOW
HARDWARE



QV586
L - NYLON CHEVERON



MATERIAL : NYLON B

QV901
15/20 EURO POLYIMIDE ROAD



MATERIAL : NYLON B

QV602
ALUMINIUM ANTIDUST PAD (25MM)



MATERIAL : ALUMINIUM B

QV908 (BLACK) / QV909 (WHITE)
POCKET SLIDING STRIKER



MATERIAL : CASTING W B

QV910
15/20 EURO ALUMINIUM ROD



MATERIAL : ALUMINIUM FINISH : MILL

QV913
4.5MM SS CHEVERON SS-304 GRADE



MATERIAL : SS FINISH : MILL

QV914
6.5MM SS CHEVERON SS-304 GRADE



MATERIAL : SS FINISH : MILL

QV915
12MM SS CHEVERON SS-304 GRADE



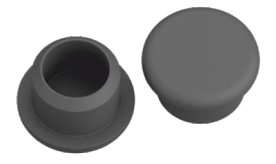
MATERIAL : SS FINISH : MILL

QV510
DISTANCE PICE



MATERIAL : NYLON B

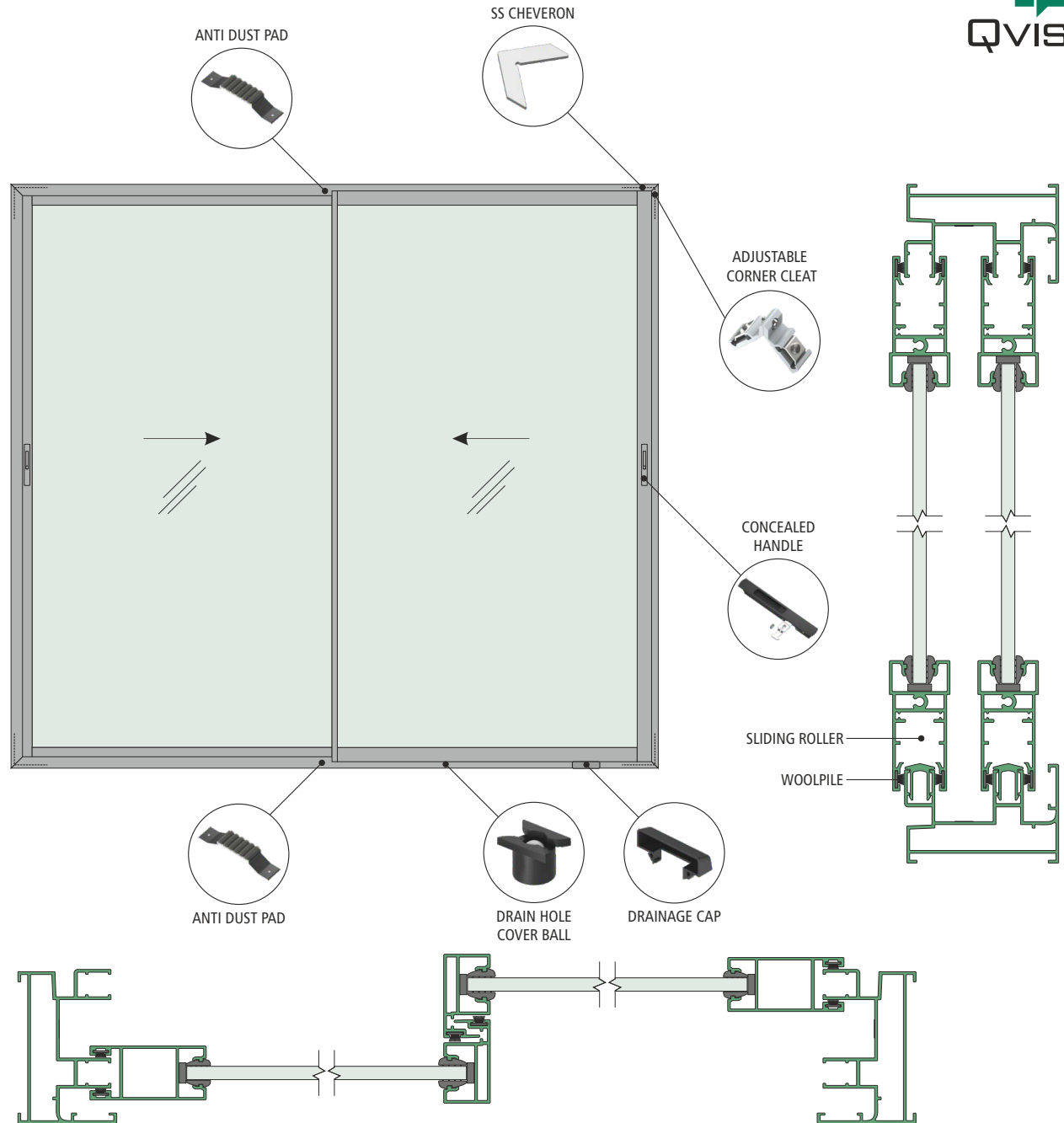
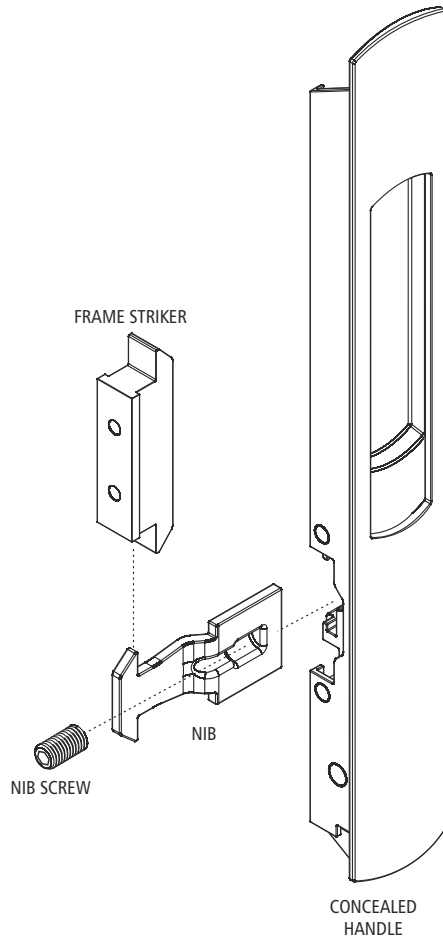
QV518 BLACK / QV524 WHITE
11.5MM HOLE CAP



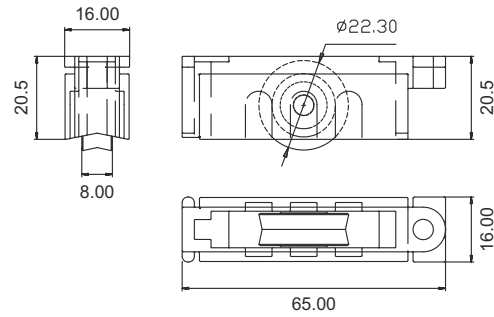
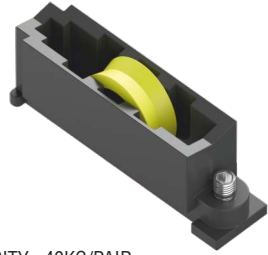
MATERIAL : NYLON W B

26MM SLIDING WINDOW HARDWARE

26MM SLIDING WINDOW HARDWARE APPLICATION

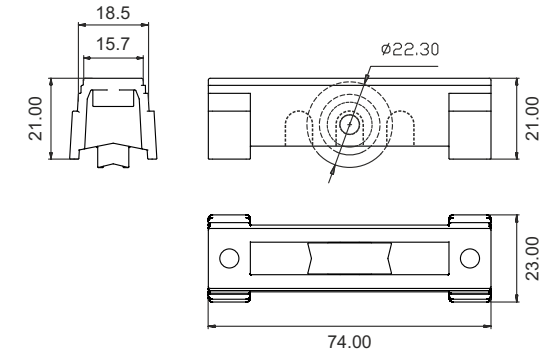


QV123
SINGLE ROLLER (V GROOVE)



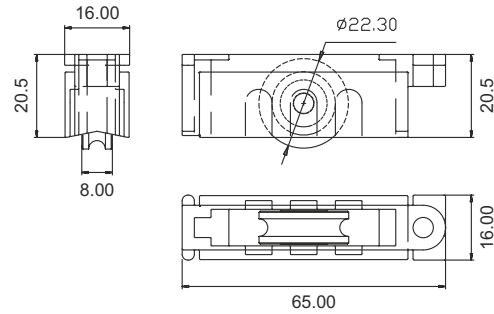
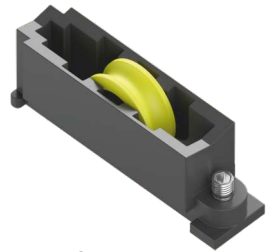
CAPACITY : 40KG/PAIR
BODY : PLASTIC
WHEELS : NYLON

QV124
SINGLE ROLLER (V GROOVE)



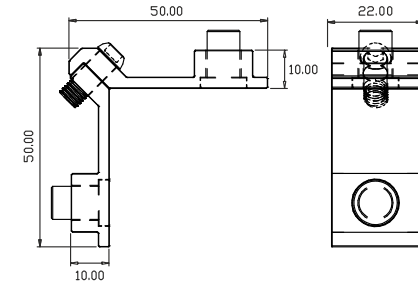
CAPACITY : 40KG/PAIR
BODY : PLASTIC
WHEELS : NYLON

QV125
SINGLE ROLLER (U GROOVE)



CAPACITY : 60KG/PAIR
BODY : PLASTIC
WHEELS : NYLON

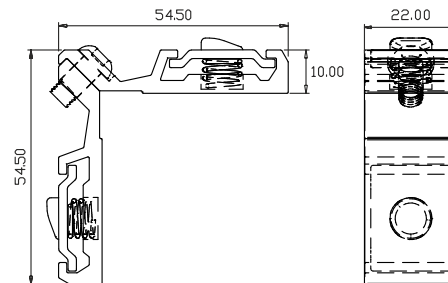
QV201
10X22MM ADJUSTABLE CORNER CLEAT



MATERIAL : ALUMINIUM

FINISH : MILL

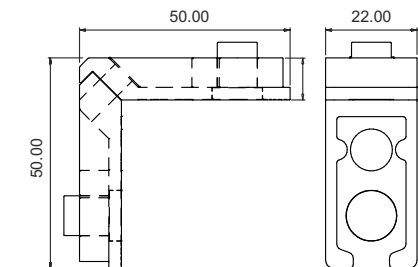
QV202
10X22MM ADJUSTABLE CORNER CLEAT (PREMIUM)



MATERIAL : ALUMINIUM

FINISH : MILL

QV220
10X22MM ADJUSTABLE CORNER CLEAT



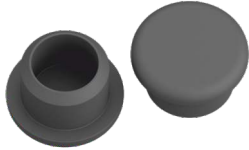
MATERIAL : CASTING

FINISH : MILL

26MM SLIDING WINDOW
HARDWARE



QV518 BLACK / **QV524** WHITE
11.5MM HOLE CAP



MATERIAL : NYLON



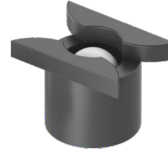
QV519 BLACK / **QV520** WHITE
WATER DRAINAGE CAP WITHOUT
WOOVER PLATE



MATERIAL : NYLON



QV521
DRAIN HOLE COVER BALL



MATERIAL : NYLON



QV522
DRAIN CAPSULE SLOT COVER



MATERIAL : NYLON



QV534 BLACK / **QV535** WHITE
BUFFER BUMP STOPPER



MATERIAL : CASTING



QV542 BLACK / **QV596** ZINC
NIB HOLDER TWO WAY



MATERIAL : CASTING



QV543
NIB HOLDER TWO WAY SMALL



MATERIAL : CASTING



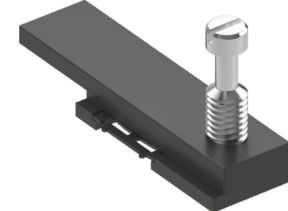
QV581
ONE WAY NIB HOLDER



MATERIAL : CASTING



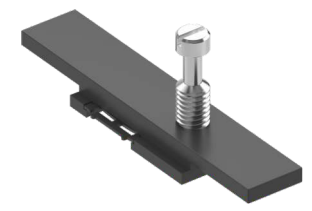
QV544
ONE WAY CONNECTING MULTI
LOCKING DEVICE 25MM (ADJUSTABLE)



MATERIAL : CASTING



QV545
TWO WAY CONNECTING MULTI
LOCKING DEVICE 25MM (ADJUSTABLE)



MATERIAL : CASTING



QV548
SLIDING MULTILOCKING
RECIEVER SCREW



MATERIAL : CASTING



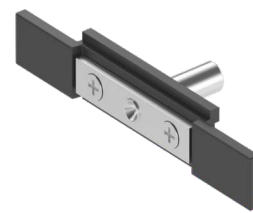
QV549
SLIDING MULTILOCKING
RECIEVER ALLEN-KEY



MATERIAL : CASTING



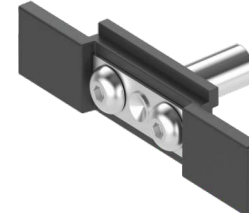
QV552
ROD CONNECTING DEVICE
(STANDARD)



MATERIAL : CASTING



QV553
ROD CONNECTING DEVICE
(PREMIUM)



MATERIAL : CASTING



QV554
SS - 304 GRADE FORK CONNECTOR PIN



MATERIAL : SS

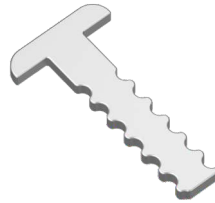
FINISH : MILL

QV557
37MM STREIGHT T- TYPE NIB



MATERIAL : SS FINISH : MILL

QV558
50MM STREIGHT T- TYPE NIB



MATERIAL : SS FINISH : MILL

QV559
37MM STREIGHT J- TYPE NIB



MATERIAL : SS FINISH : MILL

QV560
50MM STREIGHT J- TYPE NIB



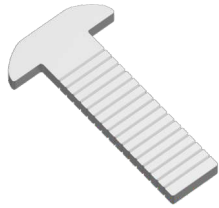
MATERIAL : SS FINISH : MILL

QV561
SS NIB FOR CONCEAL LOCK



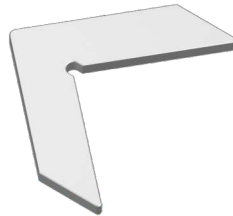
MATERIAL : SS FINISH : MILL

QV562
SS BEND NIB T-TYPE



MATERIAL : SS FINISH : MILL

QV567
7MM SS CHEVERON



MATERIAL : SS FINISH : MILL

QV569 BLACK / **QV599** WHITE
WATER DRAINAGE CAP WITH
WOOVER PLATE



MATERIAL : NYLON W B

QV573 ZINC / **QV574** BLACK
DUCK FRAME STRIKER



MATERIAL : CASTING Z B

QV575 ZINC / **QV576** BLACK
STRAIGHT FRAME STRIKER



MATERIAL : CASTING Z B

QV577 ZINC / **QV578** BLACK
8.5MM SLIM FRAME STRIKER



MATERIAL : CASTING Z B

QV585 BLACK / **QV600** WHITE
29MM SERIES INTERLOCK WITH CAP



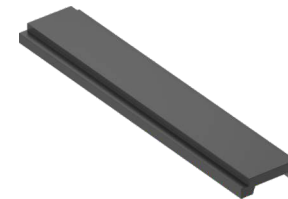
MATERIAL : NYLON W B

QV590
26MM RAINFORCEMENT CAP



MATERIAL : NYLON B

QV901
15/20 EURO POLYIMIDE ROAD



MATERIAL : NYLON B

QV602
ALUMINIUM ANTIDUST PAD (25MM)



MATERIAL : ALUMINIUM B

26MM SLIDING WINDOW
HARDWARE

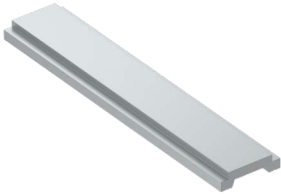


QV908 (BLACK) / **QV909** (WHITE)
POCKET SLIDING STRIKER



MATERIAL : CASTING W B

QV910
15/20 EURO ALUMINIUM ROD



MATERIAL : ALUMINIUM FINISH : MILL

QV913
4.5MM SS CHEVERON SS-304 GRADE



MATERIAL : SS FINISH : MILL

QV914
6.5MM SS CHEVERON SS-304 GRADE



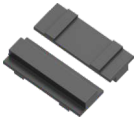
MATERIAL : SS FINISH : MILL

QV915
12MM SS CHEVERON SS-304 GRADE



MATERIAL : SS FINISH : MILL

QV510
DISTANCE PICE



MATERIAL : NYLON B

QV608 BLACK / **QV609** WHITE
BUFFER BUMP STOPPER (V-GROOVE)



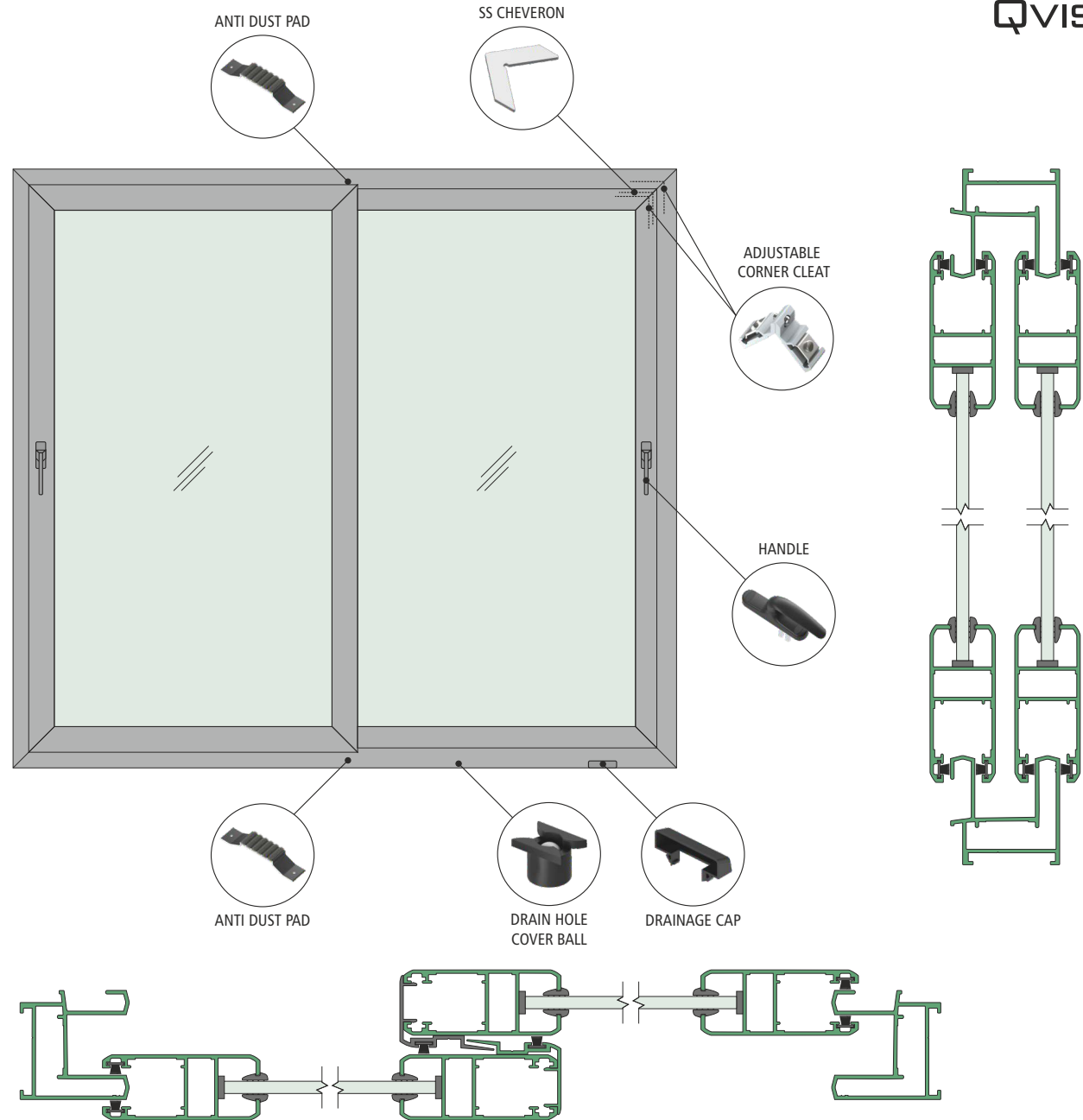
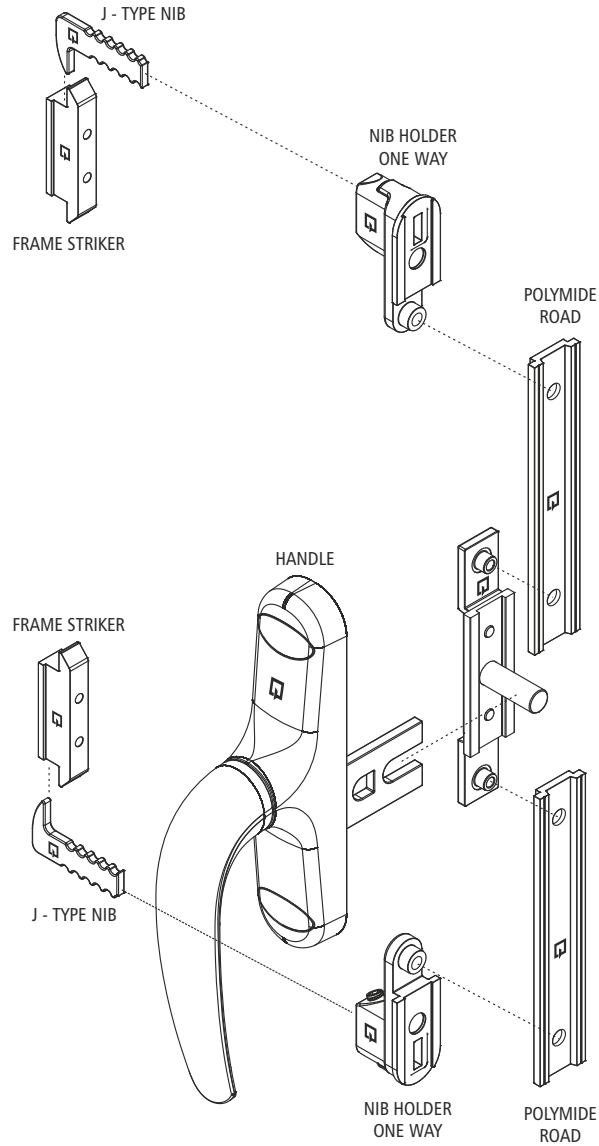
MATERIAL : NYLON W B

BUILT TO ENDURE

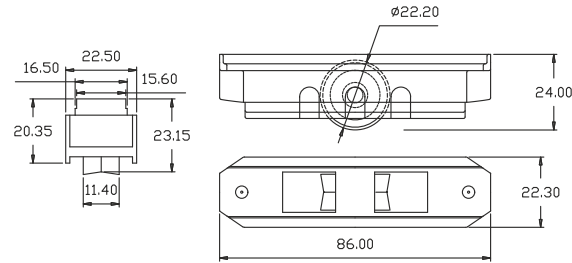
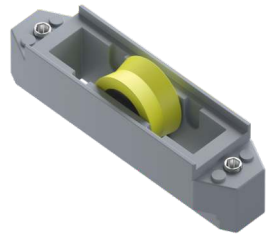


27MM SLIDING WINDOW HARDWARE

27MM SLIDING WINDOW HARDWARE APPLICATION

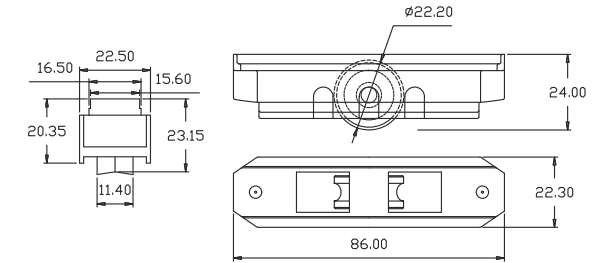


QV101
FIX ROLLER WITH SINGLE BEARING (2+1) (V GROOVE)



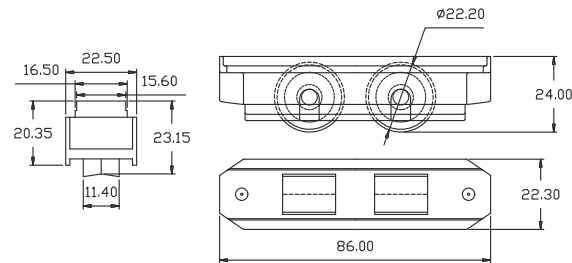
CAPACITY : 40KG/PAIR
BODY : PLASTIC
WHEELS : NYLON

QV102
FIX ROLLER WITH SINGLE BEARING (2+1) (U GROOVE)



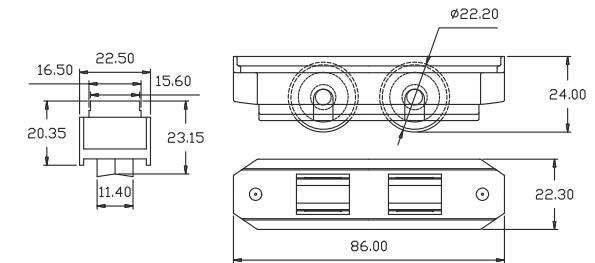
CAPACITY : 40KG/PAIR
BODY : PLASTIC
WHEELS : NYLON

QV103
FIX ROLLER WITH DOUBLE BEARING (2+2) (V GROOVE)



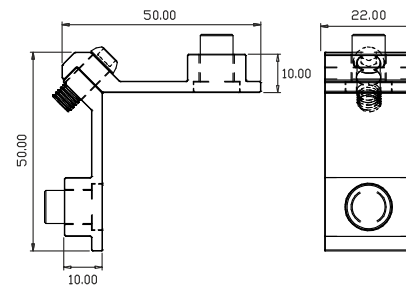
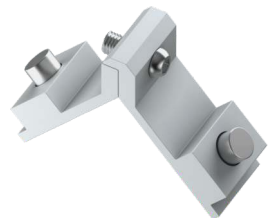
CAPACITY : 60KG/PAIR
BODY : PLASTIC
WHEELS : NYLON

QV104
FIX ROLLER WITH DOUBLE BEARING (2+2) (U GROOVE)



CAPACITY : 60KG/PAIR
BODY : PLASTIC
WHEELS : NYLON

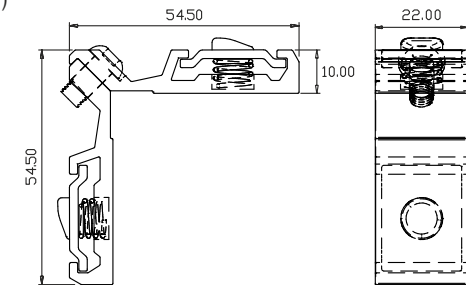
QV201
10X22MM ADJUSTABLE CORNER CLEAT



MATERIAL : ALUMINIUM

FINISH : MILL

QV202
10X22MM ADJUSTABLE CORNER CLEAT (PREMIUM)

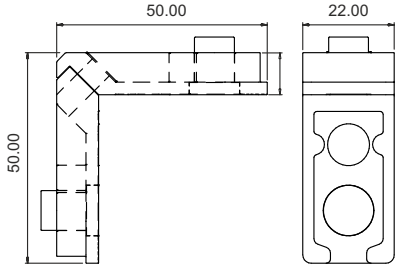


MATERIAL : ALUMINIUM

B

FINISH : MILL

QV220
10X22MM ADJUSTABLE CORNER CLEAT



MATERIAL : CASTING

FINISH : MILL

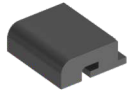
QV507 BLACK / **QV528** WHITE
27MM SERIES INTERLOCK WITH CAP



MATERIAL : NYLON



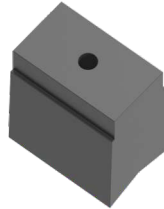
QV509 BLACK / **QV594** WHITE
VENT GUIDE



MATERIAL : NYLON



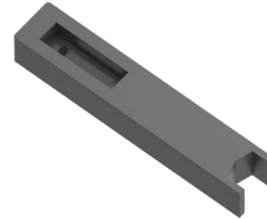
QV511 BLACK / **QV531** WHITE
27MM LOCK GUIDE



MATERIAL : NYLON



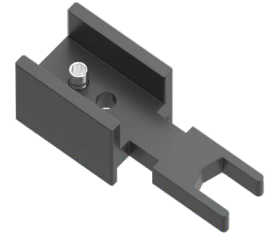
QV513 BLACK / **QV530** WHITE
27MM SERIES ANTI LIFT GUIDE



MATERIAL : NYLON



QV514 WHITE / **QV527** WHITE
27MM SERIES ANTI LIFT Y-GUARD



MATERIAL : NYLON



QV515 BLACK / **QV529** WHITE
BUFFER BUMP STOPPER



MATERIAL : NYLON



QV606 BLACK / **QV607** WHITE
BUFFER BUMP STOPPER (U&V-GROOVE)



MATERIAL : NYLON



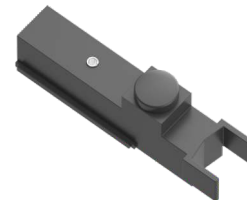
QV516
ANTILIFT WITH BUMP STOPPER



MATERIAL : NYLON



QV517
EURO GROOVE ANTI LIFT WITH BUMP STOPPER



MATERIAL : NYLON



QV519 BLACK / **QV520** WHITE
WATER DRAINAGE CAP WITHOUT WOOVER PLATE



MATERIAL : NYLON



27MM SLIDING WINDOW
HARDWARE



QV521
DRAIN HOLE COVER BALL



MATERIAL : NYLON B

QV522
DRAIN CAPSULE SLOT COVER



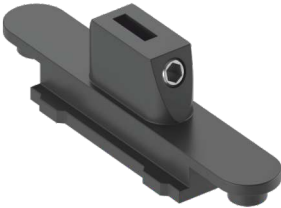
MATERIAL : NYLON B

QV534 BLACK / QV535 WHITE
BUFFER BUMP STOPPER



MATERIAL : CASTING W B

QV542 BLACK / QV596 ZINC
NIB HOLDER TWO WAY



MATERIAL : CASTING Z B

QV543
NIB HOLDER TWO WAY SMALL



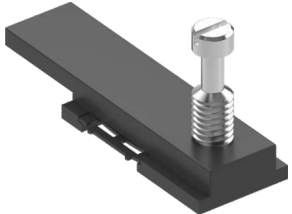
MATERIAL : CASTING B

QV581
ONE WAY NIB HOLDER



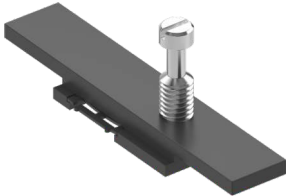
MATERIAL : CASTING B

QV544
ONE WAY CONNECTING MULTI
LOCKING DEVICE 25MM (ADJUSTABLE)



MATERIAL : CASTING B

QV545
TWO WAY CONNECTING MULTI
LOCKING DEVICE 25MM (ADJUSTABLE)



MATERIAL : CASTING B

QV548
SLIDING MULTILOCKING
RECIEVER SCREW



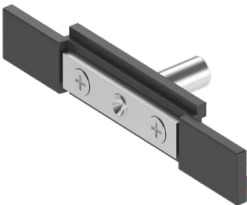
MATERIAL : CASTING B

QV549
SLIDING MULTILOCKING
RECIEVER ALLEN-KEY



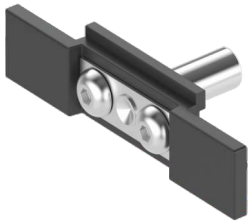
MATERIAL : CASTING B

QV552
ROD CONNECTING DEVICE
(STANDARD)



MATERIAL : CASTING B

QV553
ROD CONNECTING DEVICE
(PREMIUM)



MATERIAL : CASTING B

QV554
SS - 304 GRADE FORK CONNECTOR PIN



MATERIAL : SS FINISH : MILL

QV557
37MM STREIGHT T- TYPE NIB



MATERIAL : SS FINISH : MILL

QV558
50MM STREIGHT T- TYPE NIB



MATERIAL : SS FINISH : MILL

27MM SLIDING WINDOW HARDWARE



QV559
37MM STREIGHT J- TYPE NIB



MATERIAL : SS FINISH : MILL

QV560
50MM STREIGHT J- TYPE NIB



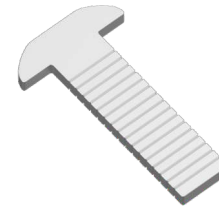
MATERIAL : SS FINISH : MILL

QV561
SS NIB FOR CONCEAL LOCK



MATERIAL : SS FINISH : MILL

QV562
SS BEND NIB T-TYPE



MATERIAL : SS FINISH : MILL

QV569 BLACK / **QV599** WHITE
WATER DRAINAGE CAP WITH
WOOVER PLATE



MATERIAL : NYLON W B

QV573 ZINC / **QV574** BLACK
DUCK FRAME STRIKER



MATERIAL : CASTING Z B

QV575 ZINC / **QV576** BLACK
STRAIGHT FRAME STRIKER



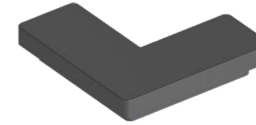
MATERIAL : CASTING Z B

QV577 ZINC / **QV578** BLACK
8.5MM SLIM FRAME STRIKER



MATERIAL : CASTING Z B

QV588
L - NYLON CHEVERON FOR DOMAL



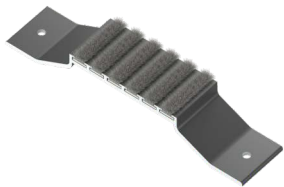
MATERIAL : NYLON Z B

QV901
15/20 EURO POLYMIDE ROAD



MATERIAL : NYLON B

QV602
ALUMINIUM ANTIDUST PAD (25MM)



MATERIAL : ALUMINIUM B

QV908 (BLACK) / **QV909** (WHITE)
POCKET SLIDING STRIKER



MATERIAL : CASTING W B

QV910
15/20 EURO ALUMINIUM ROD



MATERIAL : ALUMINIUM FINISH : MILL

QV913
4.5MM SS CHEVERON SS-304 GRADE



MATERIAL : SS FINISH : MILL

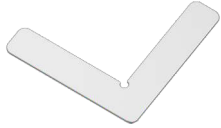
QV914
6.5MM SS CHEVERON SS-304 GRADE



MATERIAL : SS FINISH : MILL

27MM SLIDING WINDOW HARDWARE

QV915
12MM SS CHEVERON SS-304 GRADE



MATERIAL : SS FINISH : MILL

QV510
DISTANCE PICE



MATERIAL : NYLON B

QV518 BLACK / **QV524** WHITE
11.5MM HOLE CAP



MATERIAL : NYLON W B

BELODEC ENTERPRISE

QV701 TO QV708
ALUMINIUM SLIDING ESPAG-2P



MATERIAL : ALUMINIUM FINISH : MILL

MODEL NO.	LENGTH
QV701	400MM
QV702	600MM
QV703	800MM
QV704	1000MM
QV705	1200MM
QV706	1400MM
QV707	1600MM
QV708	1800MM

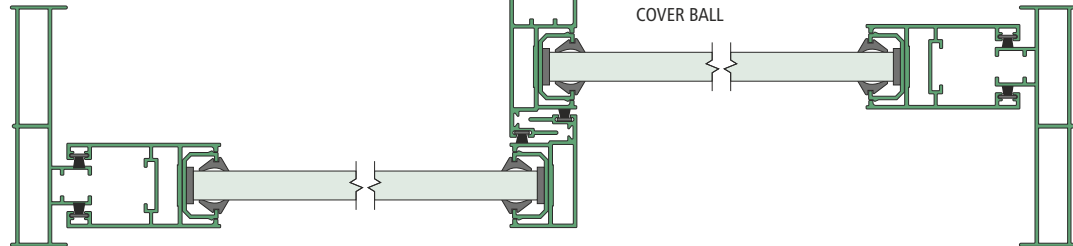
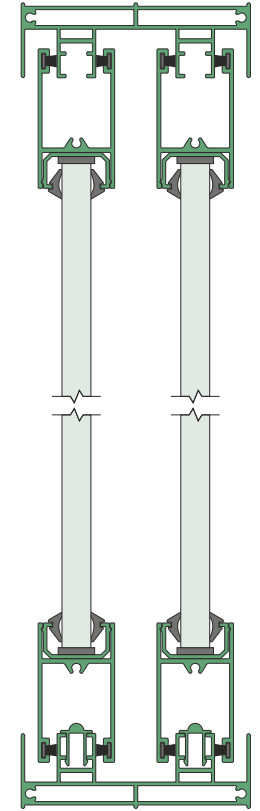
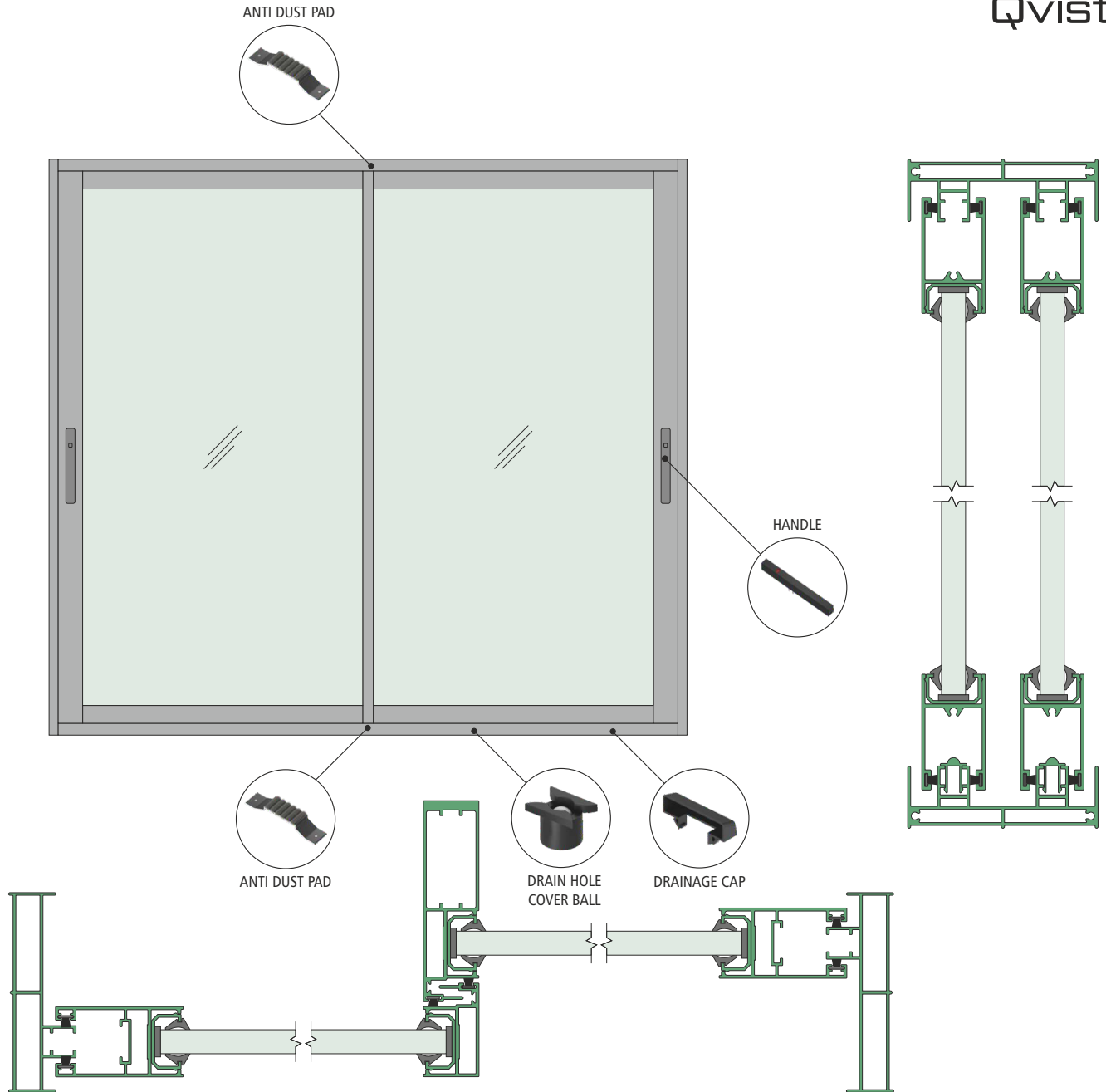
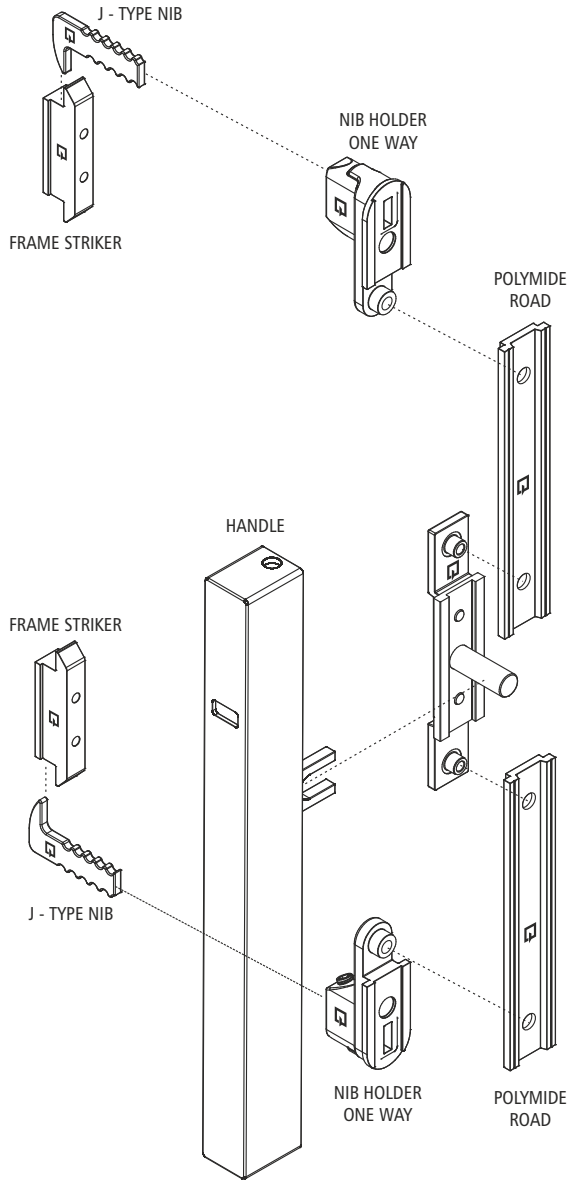


QUALITY YOU CAN TRUST

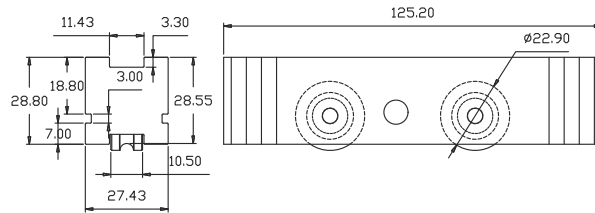


35MM SLIDING WINDOW HARDWARE

35MM SLIDING WINDOW HARDWARE APPLICATION

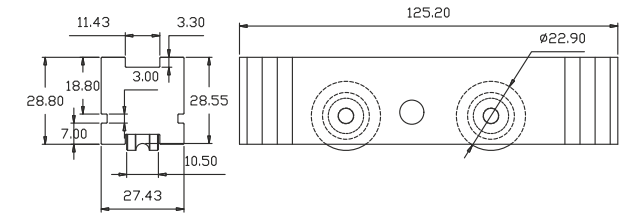


QV116
35MM TWO WHEEL ADJUSTABLE ROLLER (U GROOVE)



CAPACITY : 180KG/PAIR
BODY : ALUMINIUM
WHEELS : NYLON

QV121
35MM TWO WHEEL ADJUSTABLE ROLLER SS WHEEL (U GROOVE)



CAPACITY : 250KG/PAIR
BODY : ALUMINIUM
WHEELS : SS

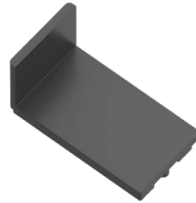
QV506
17.50MM INTERLOCK SCREW CAP



MATERIAL : NYLON



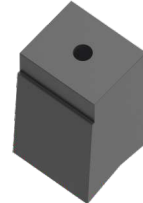
QV508
35MM SLEEK REINFORCEMENT CAP



MATERIAL : NYLON



QV512
35MM LOCK GUIDE



MATERIAL : NYLON



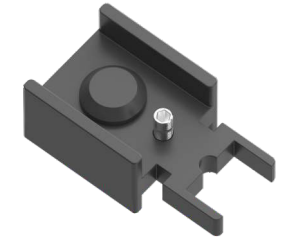
QV516
ANTILIFT WITH BUMP STOPPER



MATERIAL : NYLON



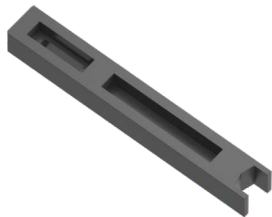
QV525
35MM BUFFER



MATERIAL : NYLON



QV532
35MM SERIES ANTILIFT GUIDE



MATERIAL : NYLON



QV534 BLACK / **QV535** WHITE
BUFFER BUMP STOPPER



MATERIAL : CASTING



QV542 BLACK / **QV596** ZINC
NIB HOLDER TWO WAY



MATERIAL : CASTING



QV543
NIB HOLDER TWO WAY SMALL



MATERIAL : CASTING



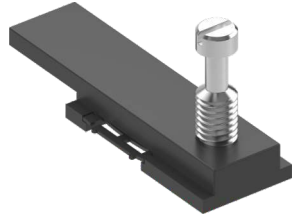
QV581
ONE WAY NIB HOLDER



MATERIAL : CASTING



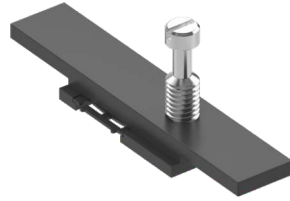
QV544
ONE WAY CONNECTING MULTI
LOCKING DEVICE 25MM (ADJUSTABLE)



MATERIAL : CASTING



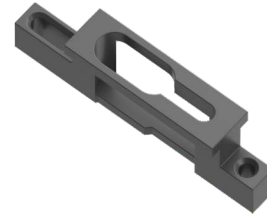
QV545
TWO WAY CONNECTING MULTI
LOCKING DEVICE 25MM (ADJUSTABLE)



MATERIAL : CASTING



QV548
SLIDING MULTILOCKING
RECEIVER SCREW



MATERIAL : CASTING



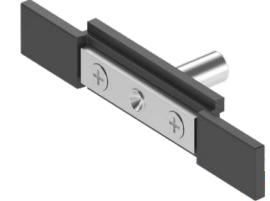
QV549
SLIDING MULTILOCKING
RECEIVER ALLEN-KEY



MATERIAL : CASTING



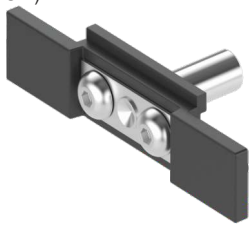
QV552
ROD CONNECTING DEVICE
(STANDARD)



MATERIAL : CASTING



QV553
ROD CONNECTING DEVICE
(PREMIUM)



MATERIAL : CASTING



QV554
SS - 304 GRADE FORK CONNECTOR PIN



MATERIAL : SS

FINISH : MILL

QV557
37MM STREIGHT T- TYPE NIB



MATERIAL : SS

FINISH : MILL

QV558
50MM STREIGHT T- TYPE NIB



MATERIAL : SS

FINISH : MILL

QV559
37MM STREIGHT J- TYPE NIB



MATERIAL : SS

FINISH : MILL

QV560
50MM STREIGHT J- TYPE NIB



MATERIAL : SS

FINISH : MILL

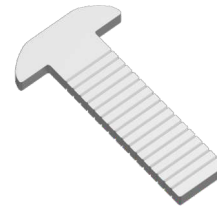
QV561
SS NIB FOR CONCEAL LOCK



MATERIAL : SS

FINISH : MILL

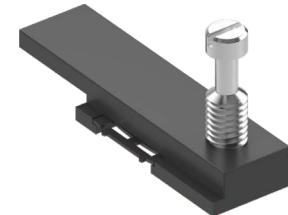
QV562
SS BEND NIB T-TYPE



MATERIAL : SS

FINISH : MILL

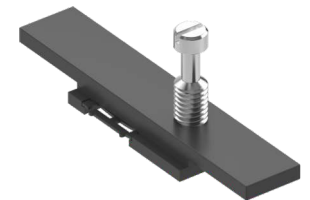
QV563
ONE WAY CONNECTING MULTI LOCKING
DEVICE 37MM



MATERIAL : CASTING



QV584
ONE WAY CONNECTING MULTI LOCKING
DEVICE 37MM



MATERIAL : CASTING



35MM SLIDING WINDOW HARDWARE



QV569 BLACK / **QV599** WHITE
WATER DRAINAGE CAP WITH
WOOVER PLATE



MATERIAL : NYLON



QV570
GULF SERIES ONE WAY CONNECTING
MULTI LOCKING DEVICE



MATERIAL : CASTING



QV571
GULF SERIES TWO WAY CONNECTING
MULTILOCKING DEVICE



MATERIAL : CASTING



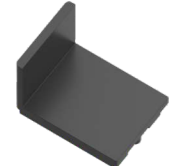
QV575 ZINC / **QV576** BLACK
STRAIGHT FRAME STRIKER



MATERIAL : CASTING



QV582
35MM PREMIUM SLEEK
REINFORCEMENT CAP



MATERIAL : NYLON

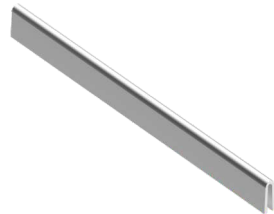


QV902
ALUMINIUM ADAPTER FOR SS RAIL
STANDARD LENGTH 16 FEET



MATERIAL : ALUMINIUM

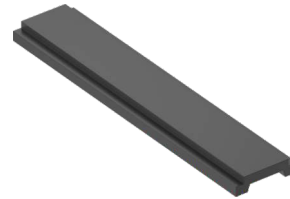
QV903
6MM X 13MM HEIGHT SS-304
GRADE U RAIL



MATERIAL : SS

FINISH : MILL

QV901
15/20 EURO POLYIMIDE ROAD



MATERIAL : NYLON



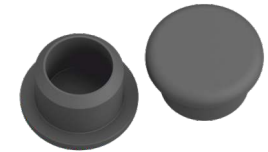
QV910
15/20 EURO ALUMINIUM ROD



MATERIAL : ALUMINIUM

FINISH : MILL

QV518 BLACK / **QV524** WHITE
11.5MM HOLE CAP



MATERIAL : NYLON



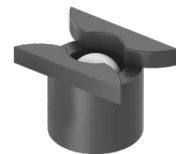
QV519 BLACK / **QV520** WHITE
WATER DRAINAGE CAP WITHOUT
WOOVER PLATE



MATERIAL : NYLON



QV521
DRAIN HOLE COVER BALL



MATERIAL : NYLON



QV522
DRAIN CAPSULE SLOT COVER



MATERIAL : NYLON



QV573 ZINC / **QV574** BLACK
DUCK FRAME STRIKER



MATERIAL : CASTING



QV577 ZINC / **QV578** BLACK
8.5MM SLIM FRAME STRIKER



MATERIAL : CASTING



35MM SLIDING WINDOW HARDWARE



QV908 (BLACK) / **QV909** (WHITE)
POCKET SLIDING STRIKER



MATERIAL : CASTING



QV603
ALUMINIUM ANTIDUST PAD (31MM)



MATERIAL : ALUMINIUM



QV510
DISTANCE PICE



MATERIAL : NYLON

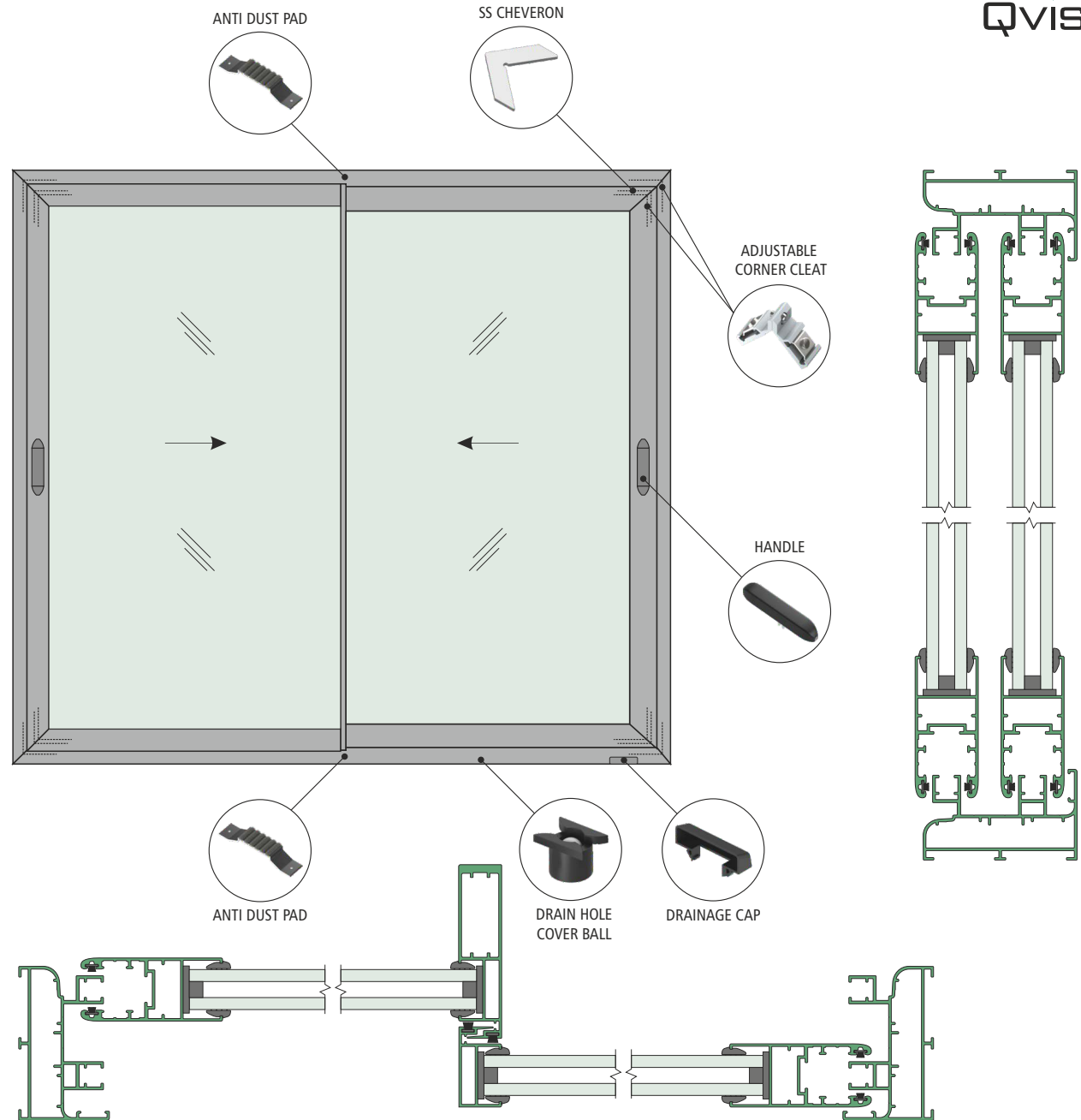
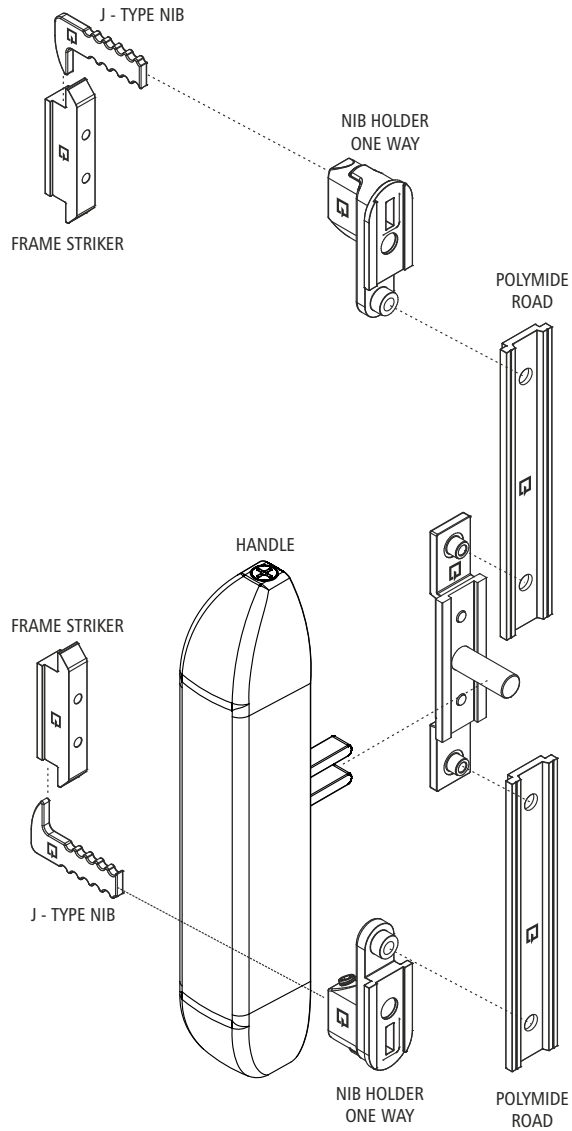


STRENGTH MEETS STYLE



37MM SLIDING WINDOW HARDWARE

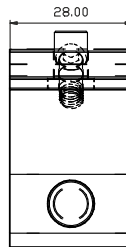
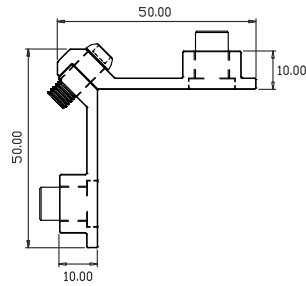
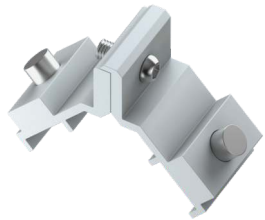
37MM SLIDING WINDOW HARDWARE APPLICATION



37MM SLIDING WINDOW HARDWARE



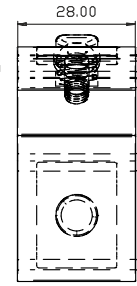
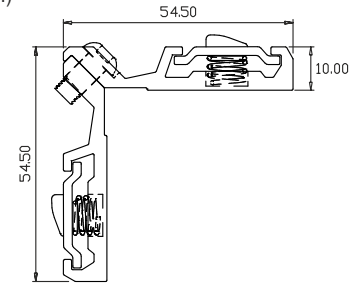
QV212
14X28MM ADJUSTABLE CORNER CLEAT



MATERIAL : ALUMINIUM

FINISH : MILL

QV213
14X28MM ADJUSTABLE CORNER CLEAT (PREMIUM)



MATERIAL : ALUMINIUM

FINISH : MILL

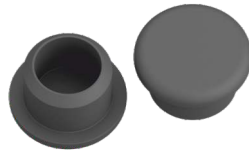
QV506
17.50MM INTERLOCK SCREW CAP



MATERIAL : NYLON



QV518 BLACK / QV524 WHITE
11.5MM HOLE CAP



MATERIAL : NYLON



QV519 BLACK / QV520 WHITE
WATER DRAINAGE CAP WITHOUT WOOVER PLATE



MATERIAL : NYLON



QV521
DRAIN HOLE COVER BALL



MATERIAL : NYLON



QV522
DRAIN CAPSULE SLOT COVER



MATERIAL : NYLON



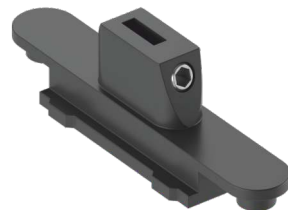
QV534 BLACK / QV535 WHITE
BUFFER BUMP STOPPER



MATERIAL : CASTING



QV542 BLACK / QV596 ZINC
NIB HOLDER TWO WAY



MATERIAL : CASTING



QV543
NIB HOLDER TWO WAY SMALL



MATERIAL : CASTING



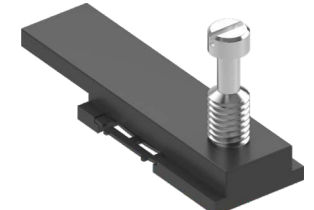
QV581
ONE WAY NIB HOLDER



MATERIAL : CASTING



QV544
ONE WAY CONNECTING MULTI LOCKING DEVICE 25MM (ADJUSTABLE)



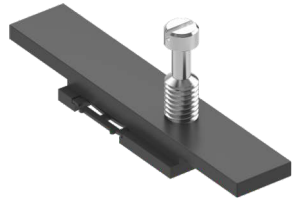
MATERIAL : CASTING



37MM SLIDING WINDOW HARDWARE



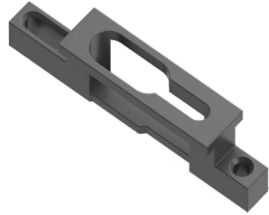
QV545
TWO WAY CONNECTING MULTI LOCKING DEVICE 25MM (ADJUSTABLE)



MATERIAL : CASTING



QV548
SLIDING MULTILOCKING RECIEVER SCREW



MATERIAL : CASTING



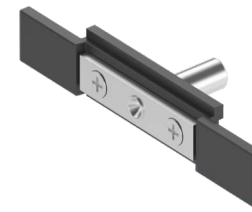
QV549
SLIDING MULTILOCKING RECIEVER ALLEN-KEY



MATERIAL : CASTING



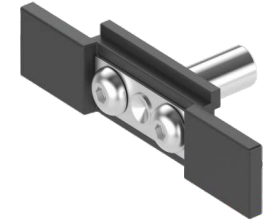
QV552
ROD CONNECTING DEVICE (STANDARD)



MATERIAL : CASTING



QV553
ROD CONNECTING DEVICE (PREMIUM)



MATERIAL : CASTING



QV554
SS - 304 GRADE FORK CONNECTOR PIN



MATERIAL : SS

FINISH : MILL

QV557
37MM STREIGHT T- TYPE NIB



MATERIAL : SS

FINISH : MILL

QV558
50MM STREIGHT T- TYPE NIB



MATERIAL : SS

FINISH : MILL

QV559
37MM STREIGHT J- TYPE NIB



MATERIAL : SS

FINISH : MILL

QV560
50MM STREIGHT J- TYPE NIB



MATERIAL : SS

FINISH : MILL

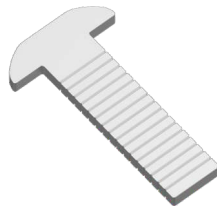
QV561
SS NIB FOR CONCEAL LOCK



MATERIAL : SS

FINISH : MILL

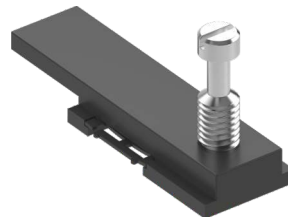
QV562
SS BEND NIB T-TYPE



MATERIAL : SS

FINISH : MILL

QV563
ONE WAY CONNECTING MULTI LOCKING DEVICE 37MM



MATERIAL : CASTING



QV584
ONE WAY CONNECTING MULTI LOCKING DEVICE 37MM



MATERIAL : CASTING



QV569 BLACK / **QV599** WHITE
WATER DRAINAGE CAP WITH WOOVER PLATE



MATERIAL : NYLON



37MM SLIDING WINDOW HARDWARE



QV573 ZINC / QV574 BLACK
DUCK FRAME STRIKER



MATERIAL : CASTING



QV575 ZINC / QV576 BLACK
STRAIGHT FRAME STRIKER



MATERIAL : CASTING



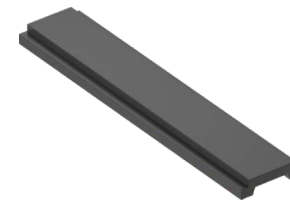
QV577 ZINC / QV578 BLACK
8.5MM SLIM FRAME STRIKER



MATERIAL : CASTING



QV901
15/20 EURO POLYIMIDE ROAD



MATERIAL : NYLON



QV902
ALUMINIUM ADAPTER FOR SS RAIL
STANDARD LENGTH 16 FEET



MATERIAL : ALUMINIUM

QV903
6MM X 13MM HEIGHT SS-304
GRADE U RAIL



MATERIAL : SS

FINISH : MILL

QV603
ALUMINIUM ANTIDUST PAD (31MM)



MATERIAL : ALUMINIUM



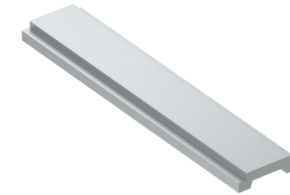
QV908 (BLACK) / QV909 (WHITE)
POCKET SLIDING STRIKER



MATERIAL : CASTING



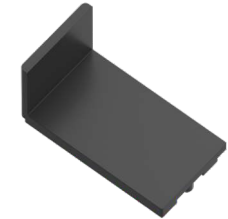
QV910
15/20 EURO ALUMINIUM ROD



MATERIAL : ALUMINIUM

FINISH : MILL

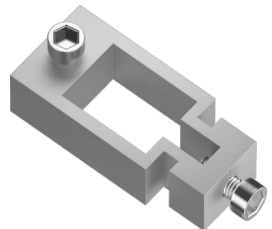
QV604
REINFORCEMENT CAP



MATERIAL : NYLON



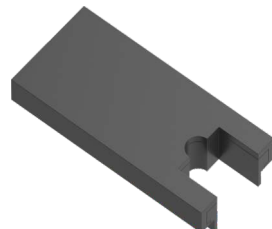
QV226
90° CORNER CLEAT (PREMIUM)



MATERIAL : ALUMINIUM

FINISH : MILL

QV533
37MM INTERLOCK CAP



MATERIAL : NYLON



QV913
4.5MM SS CHEVERON SS-304 GRADE



MATERIAL : SS

FINISH : MILL

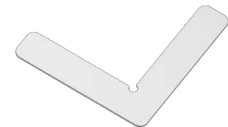
QV914
6.5MM SS CHEVERON SS-304 GRADE



MATERIAL : SS

FINISH : MILL

QV915
12MM SS CHEVERON SS-304 GRADE

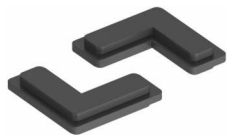


MATERIAL : SS

FINISH : MILL

37MM SLIDING WINDOW HARDWARE

QV586
L - NYLON CHEVERON



MATERIAL : NYLON



QV510
DISTANCE PICE



MATERIAL : NYLON



QV701 TO QV708
ALUMINIUM SLIDING ESPAG-2P



MATERIAL : ALUMINIUM

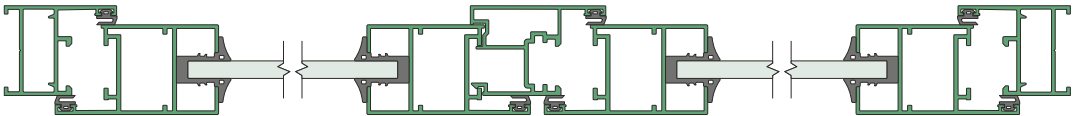
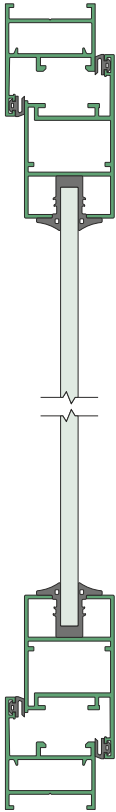
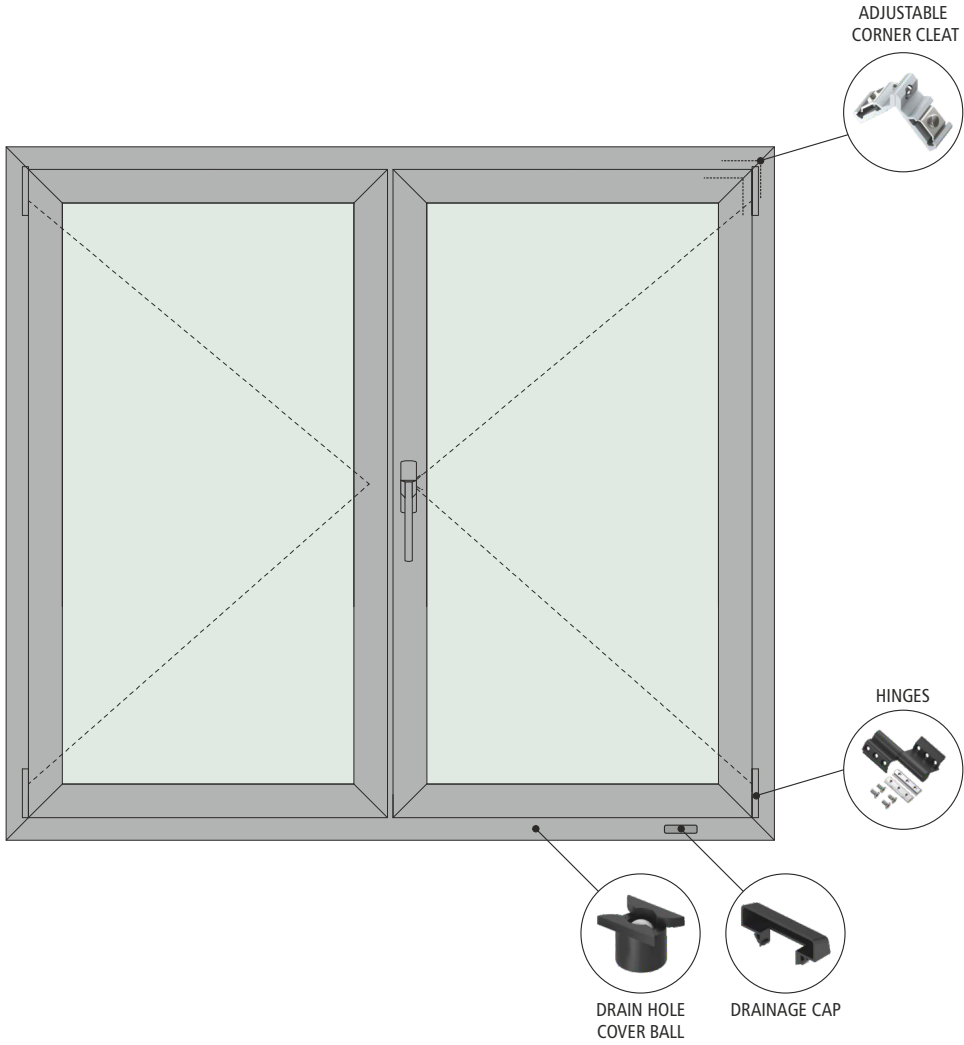
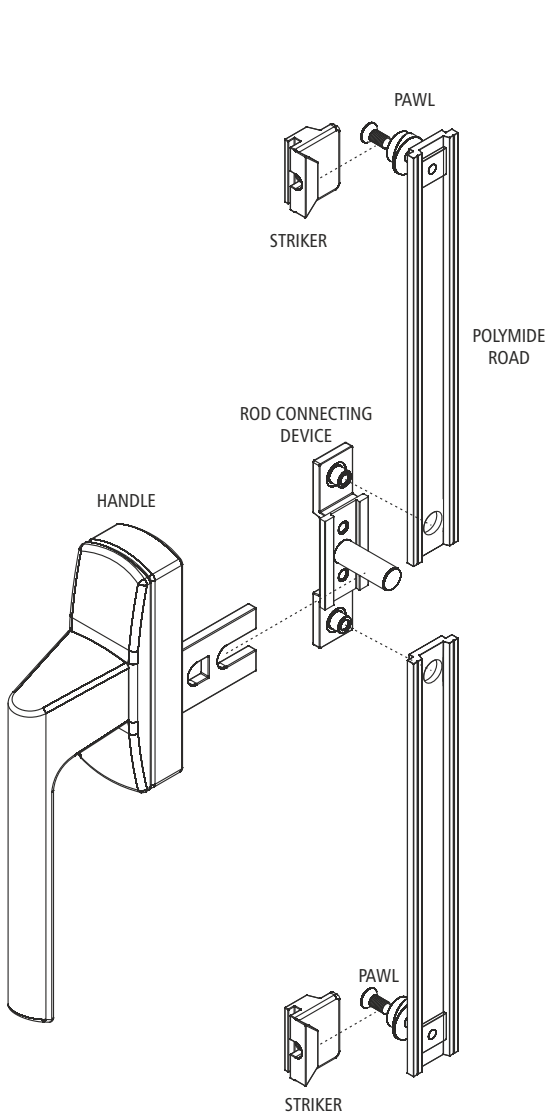
FINISH : MILL

MODEL NO.	LENGTH
QV701	400MM
QV702	600MM
QV703	800MM
QV704	1000MM
QV705	1200MM
QV706	1400MM
QV707	1600MM
QV708	1800MM



INNOVATION AT EVERY TURN

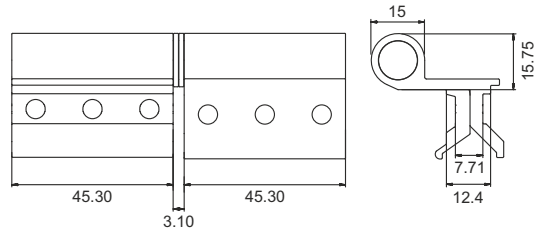




32MM CASEMENT HARDWARE



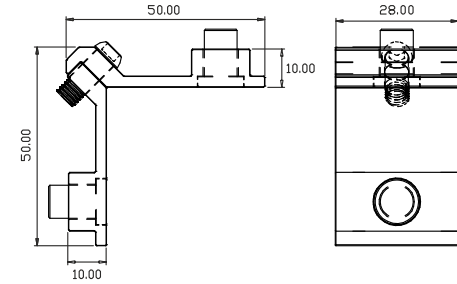
QV451 BLACK / QV452 WHITE
50MM CASEMENT BUTT HINGE 2-WINGS



MATERIAL : ALUMINIUM



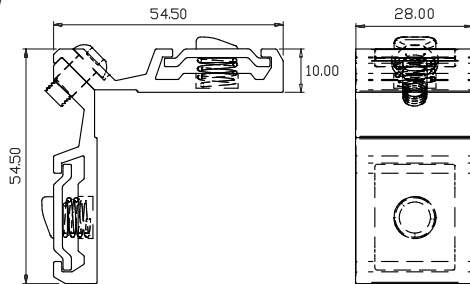
QV212
14X28MM ADJUSTABLE CORNER CLEAT



MATERIAL : ALUMINIUM

FINISH : MILL

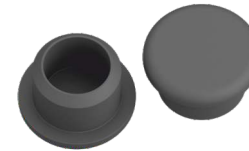
QV213
14X28MM ADJUSTABLE CORNER CLEAT (PREMIUM)



MATERIAL : ALUMINIUM

FINISH : MILL

QV518 BLACK / QV524 WHITE
11.5MM HOLE CAP



MATERIAL : NYLON



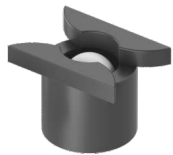
QV519 BLACK / QV520 WHITE
WATER DRAINAGE CAP WITHOUT WOOVER PLATE



MATERIAL : NYLON



QV521
DRAIN HOLE COVER BALL



MATERIAL : NYLON



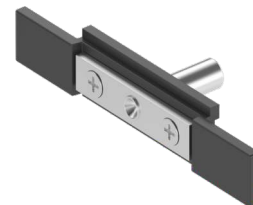
QV522
DRAIN CAPSULE SLOT COVER



MATERIAL : NYLON



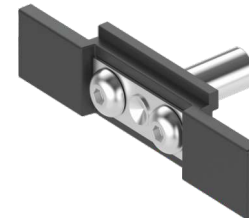
QV552
ROD CONNECTING DEVICE (STANDARD)



MATERIAL : CASTING



QV553
ROD CONNECTING DEVICE (PREMIUM)



MATERIAL : CASTING



QV554
SS - 304 GRADE FORK CONNECTOR PIN



MATERIAL : SS

FINISH : MILL

32MM CASEMENT HARDWARE



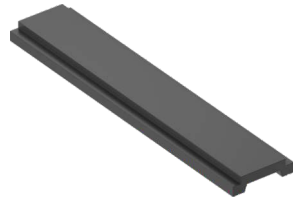
QV569 BLACK / **QV599** WHITE
WATER DRAINAGE CAP WITH
WOOVER PLATE



MATERIAL : NYLON



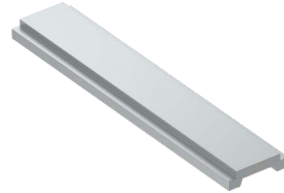
QV901
15/20 EURO POLYMIDE ROAD



MATERIAL : NYLON

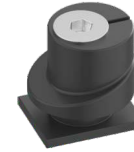


QV910
15/20 EURO ALUMINIUM ROD



MATERIAL : ALUMINIUM FINISH : MILL

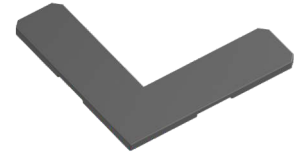
QV556 ZINC / **QV591** BLACK
8MM ADJUSTABLE LOCKING PAWL



MATERIAL : CASTING



QV589
50MM FRAME & SHUTTER



MATERIAL : NYLON



QV539 ZINC / **QV572** BLACK
50MM OPENABLE STRIKER



MATERIAL : CASTING



QV566
50MM ADJUSTABLE PAWL LOCKING STRIKER



MATERIAL : CASTING FINISH : MILL

QV776 / QV777 / QV778
FREEZE ARM



MODEL NO.	LENGTH
QV776	8"
QV777	10"
QV778	12"

MATERIAL : SS FINISH : MILL

QV1001 TO QV1009
FRICTION ARM



MATERIAL : SS FINISH : MILL

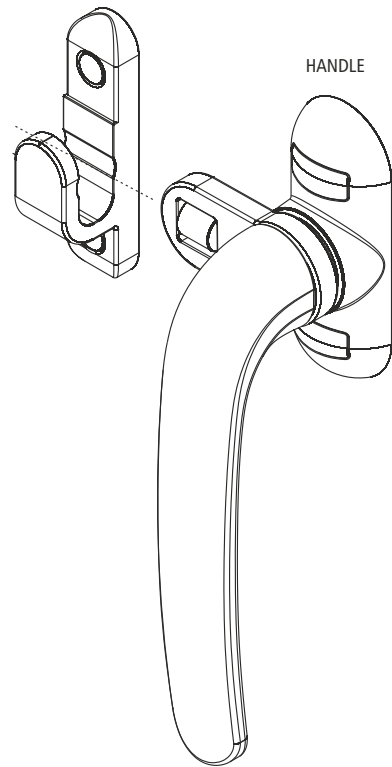
MODEL NO.	LENGTH
QV1001	8"
QV1002	10"
QV1003	12"
QV1004	14"
QV1005	16"
QV1006	18"
QV1007	20"
QV1008	22"
QV1009	24"

QV751 TO QV755
SHUT BOLT

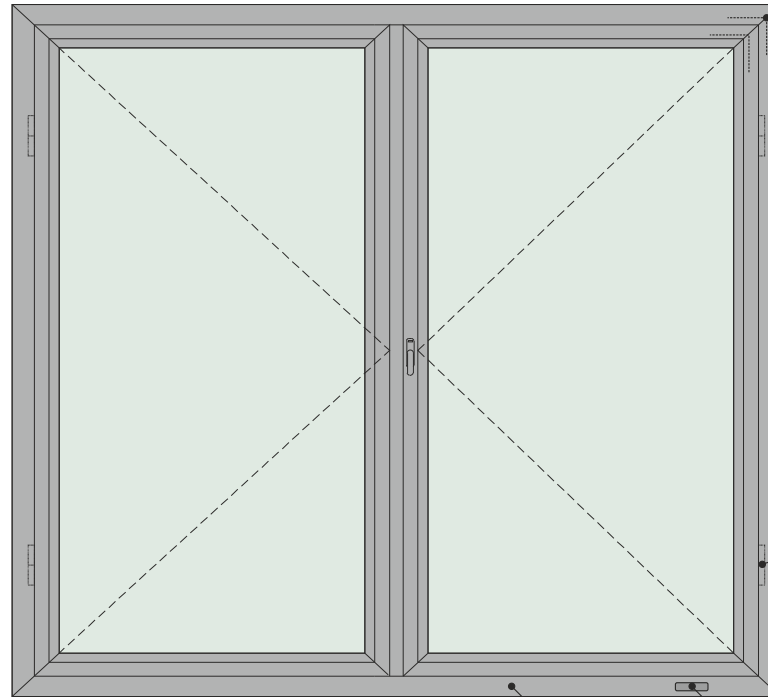


MATERIAL : ALUMINIUM

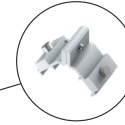
MODEL NO.	LENGTH
QV751	6"
QV752	8"
QV753	10"
QV754	12"
QV755	20"



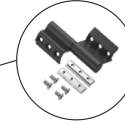
HANDLE



CORNER CLEAT



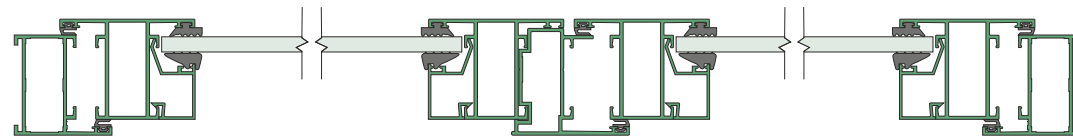
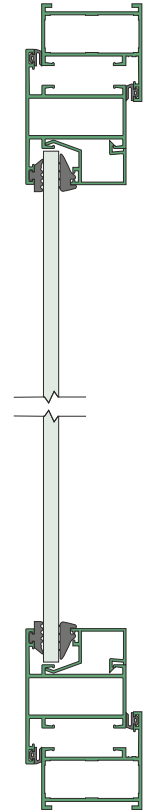
HINGES



DRAIN HOLE
COVER BALL



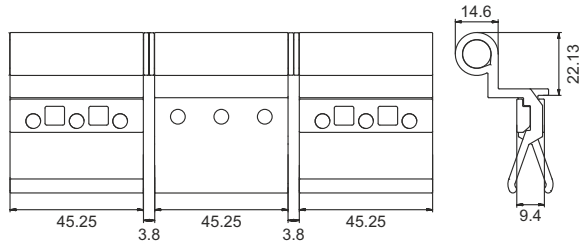
DRAINAGE CAP



40MM CASEMENT WINDOW
HARDWARE



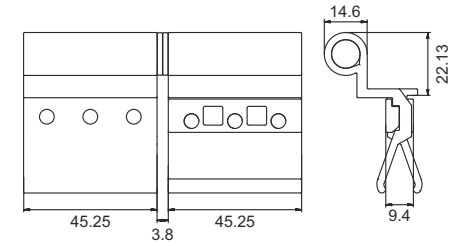
QV459 BLACK /**QV460** WHITE
40MM CASEMENT BUTT HINGE 3-WINGS



MATERIAL : ALUMINIUM



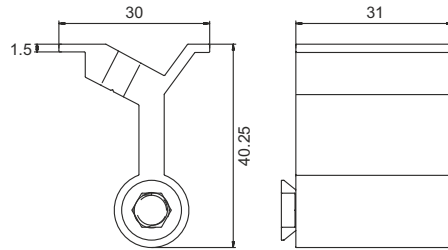
QV457 BLACK /**QV458** WHITE
40MM CASEMENT BUTT HINGE 2-WINGS



MATERIAL : ALUMINIUM



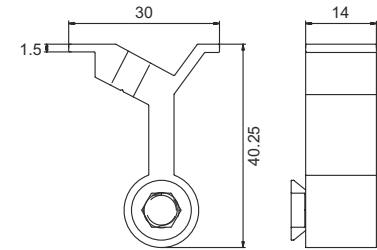
QV565
R40 MULLION CONNECTOR 31MM



MATERIAL : ALUMINIUM

FINISH : MILL

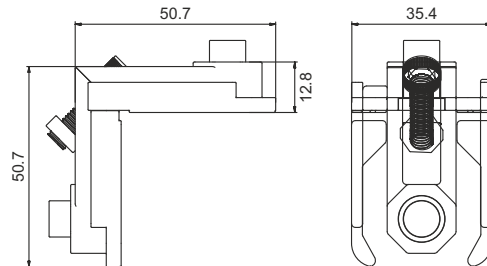
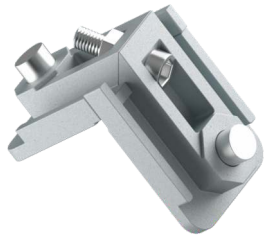
QV564
R40 MULLION CONNECTOR 14MM



MATERIAL : ALUMINIUM

FINISH : MILL

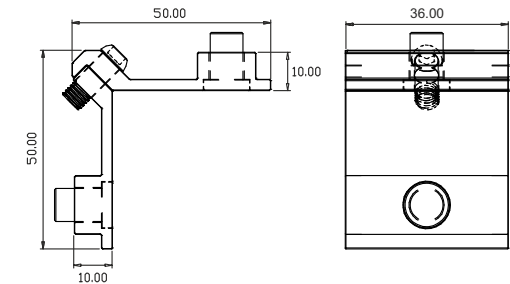
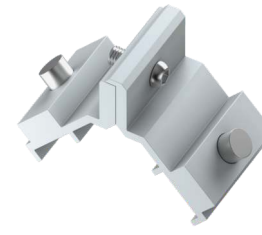
QV222
14X36MM ADJUSTABLE CORNER CLEAT



MATERIAL : CASTING

FINISH : MILL

QV217
14X36MM ADJUSTABLE CORNER CLEAT



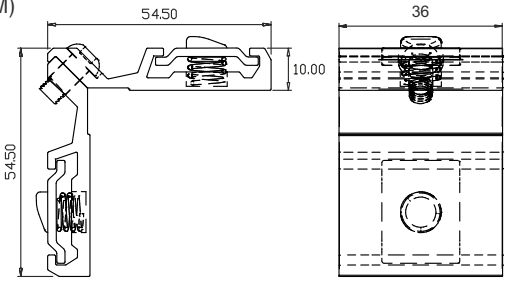
MATERIAL : ALUMINIUM

FINISH : MILL

40MM CASEMENT WINDOW
HARDWARE



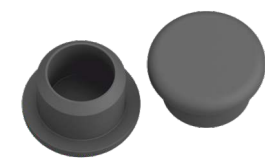
QV224
14X36MM ADJUSTABLE CORNER CLEAT (PREMIUM)



MATERIAL : ALUMINIUM

FINISH : MILL

QV518 BLACK / **QV524** WHITE
11.5MM HOLE CAP



MATERIAL : NYLON

W B

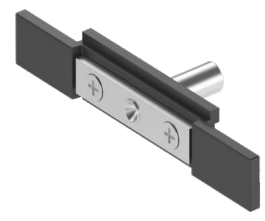
QV519 BLACK / **QV520** WHITE
WATER DRAINAGE CAP WITHOUT
WOOVER PLATE



MATERIAL : NYLON

W B

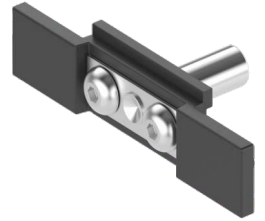
QV552
ROD CONNECTING DEVICE
(STANDARD)



MATERIAL : CASTING

B

QV553
ROD CONNECTING DEVICE
(PREMIUM)



MATERIAL : CASTING

B

QV554
SS - 304 GRADE FORK CONNECTOR PIN



MATERIAL : SS

FINISH : MILL

QV569 BLACK / **QV599** WHITE
WATER DRAINAGE CAP WITH
WOOVER PLATE



MATERIAL : NYLON

W B

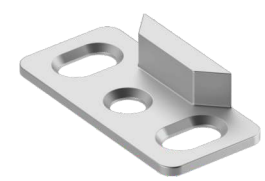
QV540
40MM OPENABLE STRIKER



MATERIAL : CASTING

B

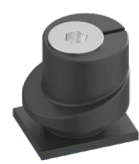
QV541
R40 CASEMENT STRIKER



MATERIAL : CASTING

FINISH : MILL

QV556 ZINC / **QV591** BLACK
8MM ADJUSTABLE LOCKING PAWL



MATERIAL : CASTING

Z B

QV589
50MM FRAME & SHUTTER



MATERIAL : NYLON

B

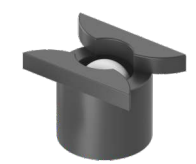
QV566
50MM ADJUSTABLE PAWL LOCKING STRIKER



MATERIAL : CASTING

FINISH : MILL

QV521
DRAIN HOLE COVER BALL



MATERIAL : NYLON

B

40MM CASEMENT WINDOW HARDWARE

QV522 DRAIN CAPSULE SLOT COVER



MATERIAL : NYLON

B

QV776 / QV777 / QV778 FREEZE ARM



MODEL NO.	LENGTH
QV776	8"
QV777	10"
QV778	12"

MATERIAL : SS

FINISH : MILL

BELODEC ENTERPRISE

QV1001 TO QV1009 FRICTION ARM



MODEL NO.	LENGTH
QV1001	8"
QV1002	10"
QV1003	12"
QV1004	14"
QV1005	16"
QV1006	18"
QV1007	20"
QV1008	22"
QV1009	24"

MATERIAL : SS

FINISH : MILL

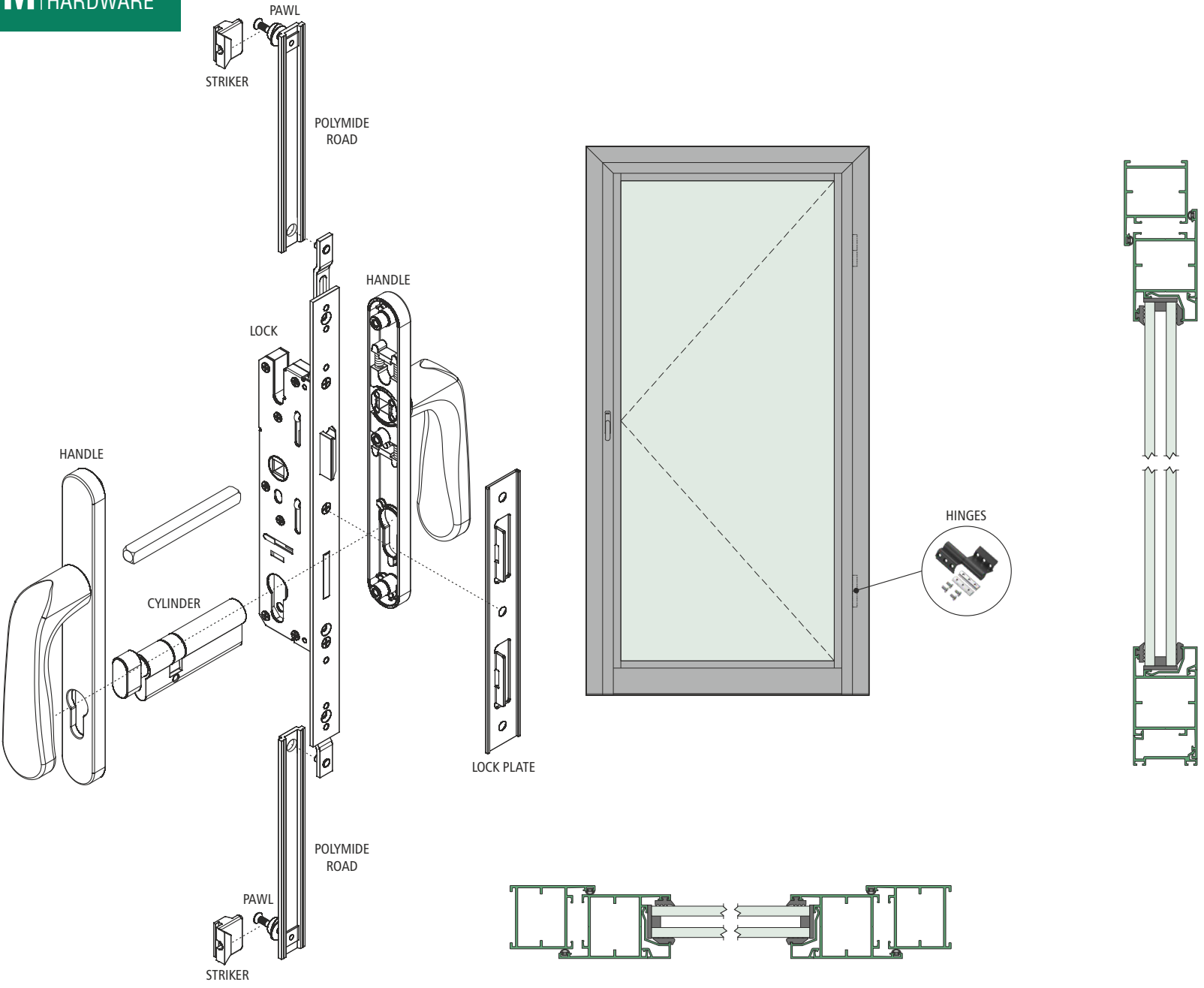


PRECISION IN EVERY PIECE



40MM DOOR HARDWARE

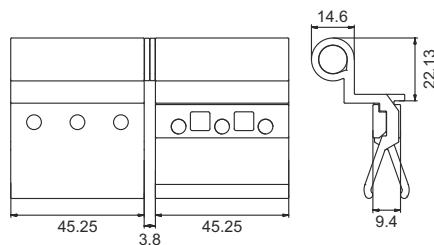
40MM DOOR HARDWARE APPLICATION



40MM DOOR HARDWARE



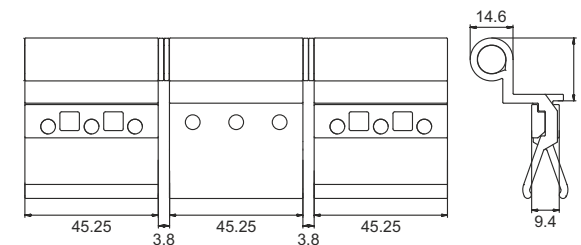
QV457 BLACK /QV458 WHITE
40MM CASEMENT BUTT HINGE 2-WINGS



MATERIAL : ALUMINIUM



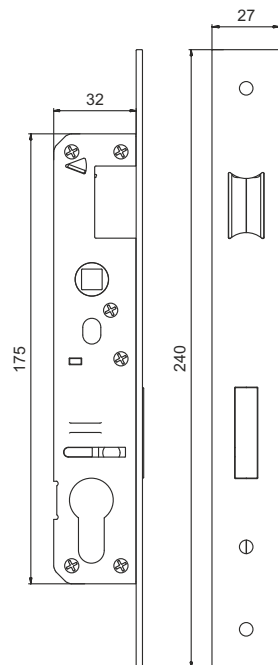
QV459 BLACK /QV460 WHITE
40MM CASEMENT BUTT HINGE 3-WINGS



MATERIAL : ALUMINIUM

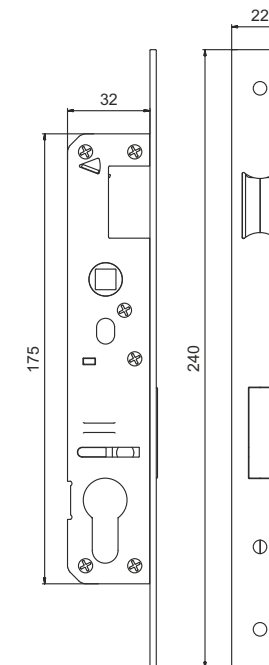


QV304
25MM B/S CASEMENT DOOR LOCK BODY



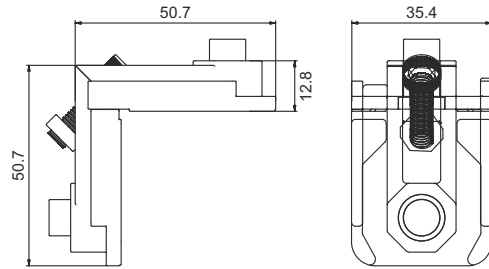
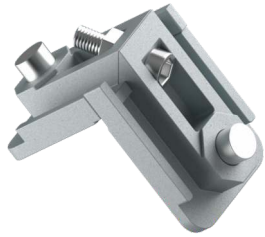
MATERIAL : STEEL

QV303
20MM B/S CASEMENT DOOR LOCK BODY



MATERIAL : STEEL

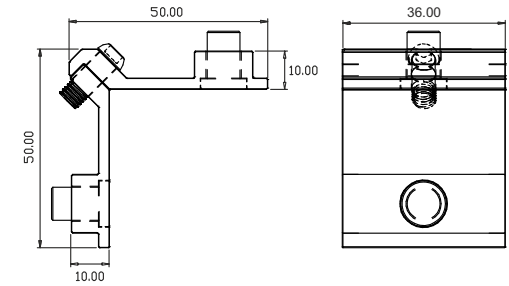
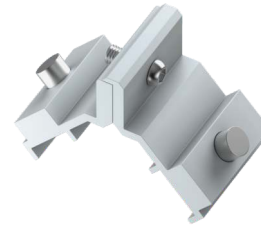
QV222
14X36MM ADJUSTABLE CORNER CLEAT



MATERIAL : CASTING

FINISH : MILL

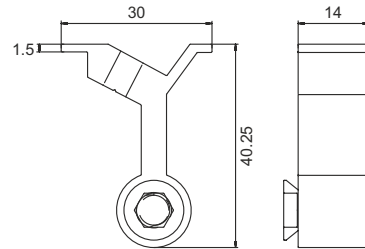
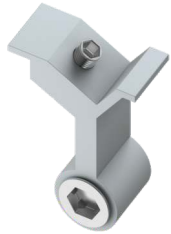
QV217
14X36MM ADJUSTABLE CORNER CLEAT



MATERIAL : ALUMINIUM

FINISH : MILL

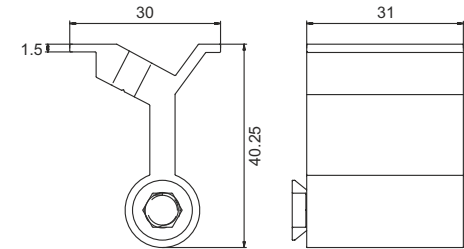
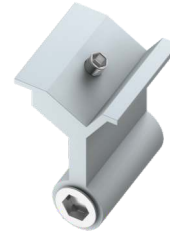
QV564
R40 MULLION CONNECTOR 14MM



MATERIAL : ALUMINIUM

FINISH : MILL

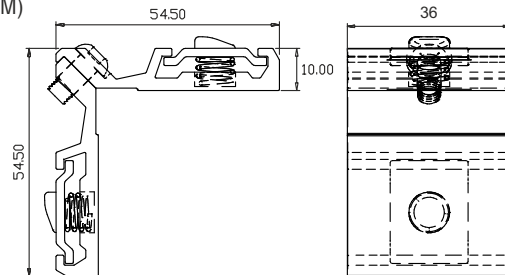
QV565
R40 MULLION CONNECTOR 31MM



MATERIAL : ALUMINIUM

FINISH : MILL

QV224
14X36MM ADJUSTABLE CORNER CLEAT (PREMIUM)



MATERIAL : ALUMINIUM

FINISH : MILL

QV403
60MM CYLINDER BOTH SIDE KEY



MATERIAL : BRASS

QV404
60MM CYLINDER ONE SIDE KEY
ONE SIDE NOB

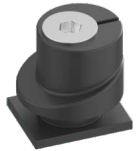


MATERIAL : BRASS

40MM DOOR HARDWARE



QV556 ZINC / QV591 BLACK
8MM ADJUSTABLE LOCKING PAWL



MATERIAL : CASTING



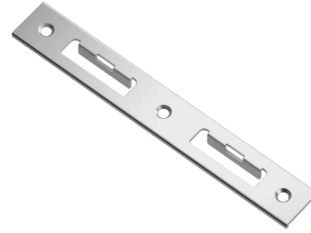
QV569 BLACK / QV599 WHITE
WATER DRAINAGE CAP WITH
WOOVER PLATE



MATERIAL : NYLON

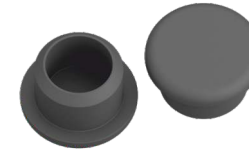


QV352
26X187 PA CENTRE STRICKER



MATERIAL : SS

QV518 BLACK / QV524 WHITE
11.5MM HOLE CAP



MATERIAL : NYLON



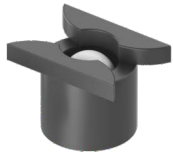
QV519 BLACK / QV520 WHITE
WATER DRAINAGE CAP WITHOUT
WOOVER PLATE



MATERIAL : NYLON



QV521
DRAIN HOLE COVER BALL



MATERIAL : NYLON



QV522
DRAIN CAPSULE SLOT COVER



MATERIAL : NYLON



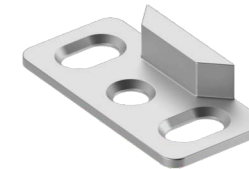
QV540
40MM OPENABLE STRIKER



MATERIAL : CASTING



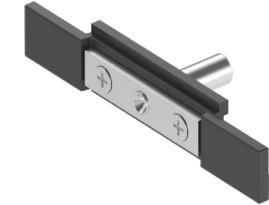
QV541
R40 CASEMENT STRIKER



MATERIAL : CASTING

FINISH : MILL

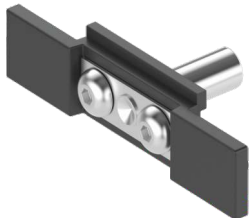
QV552
ROD CONNECTING DEVICE
(STANDARD)



MATERIAL : CASTING



QV553
ROD CONNECTING DEVICE
(PREMIUM)



MATERIAL : CASTING



QV554
SS - 304 GRADE FORK CONNECTOR PIN



MATERIAL : SS

FINISH : MILL

QV589
50MM FRAME & SHUTTER



MATERIAL : NYLON



QV709 TO QV716
ALUMINIUM CASEMENT ESPAG-2P



MATERIAL : ALUMINIUM

FINISH : MILL

MODEL NO.	LENGTH
QV709	400MM
QV710	600MM
QV711	800MM
QV712	1000MM
QV713	1200MM
QV714	1400MM
QV715	1600MM
QV716	1800MM

QV751 TO QV755
SHUT BOLT



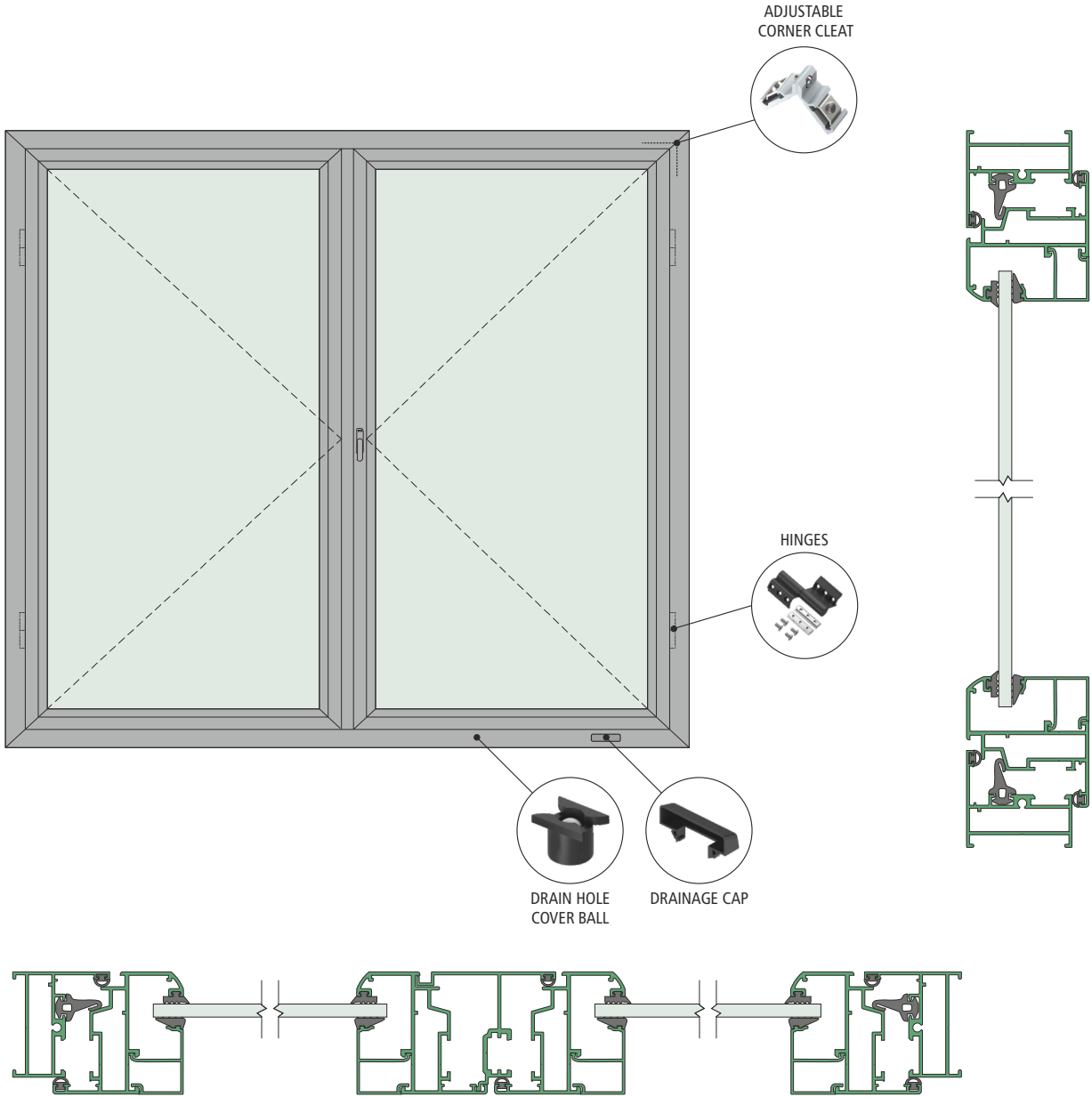
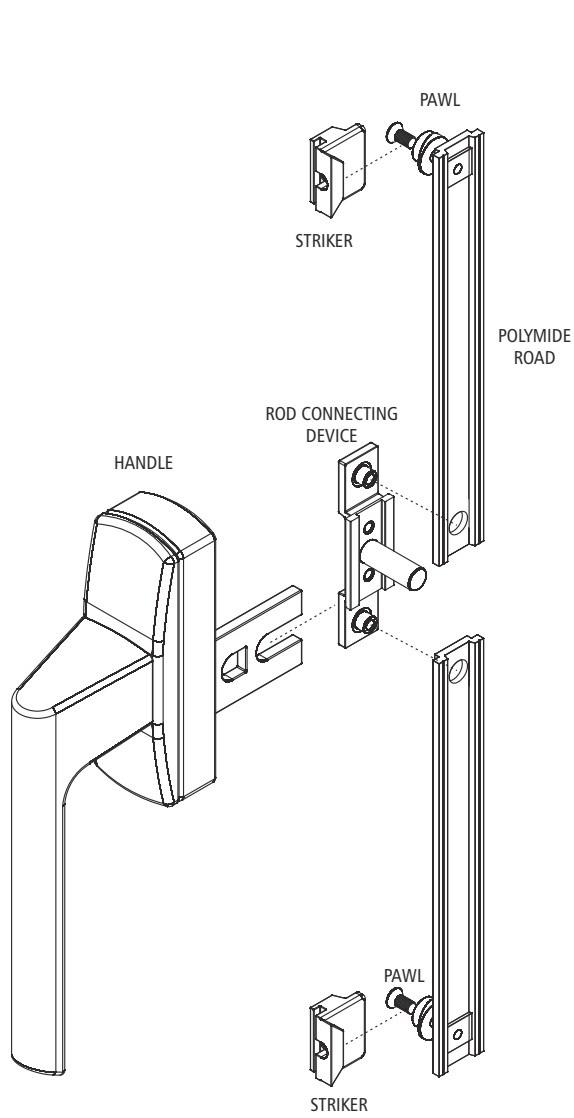
MODEL NO.	LENGTH
QV751	6"
QV752	8"
QV753	10"
QV754	12"
QV755	20"

MATERIAL : ALUMINIUM



ELEVATE YOUR SPACE

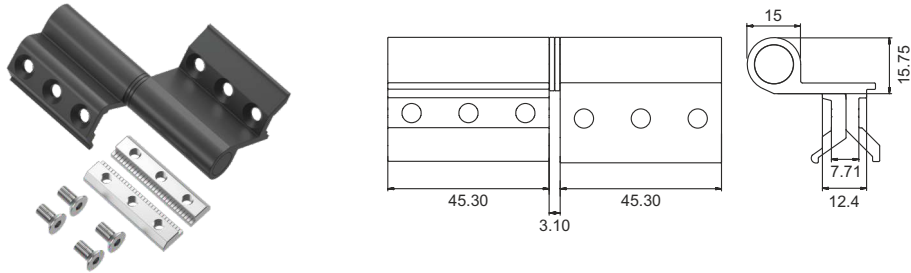




50MM CASEMENT WINDOW
HARDWARE



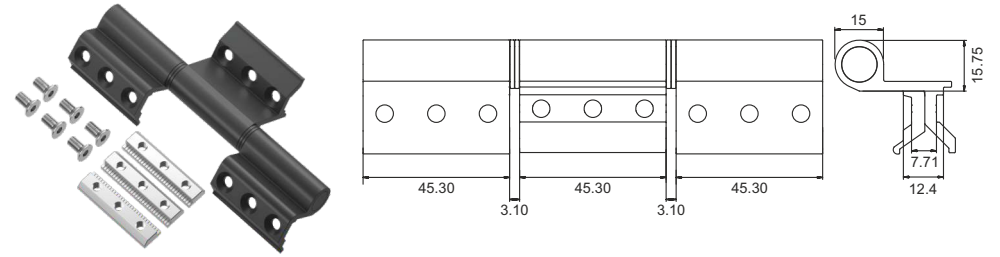
QV451 BLACK /**QV452** WHITE
50MM CASEMENT BUTT HINGE 2-WINGS



MATERIAL : ALUMINIUM



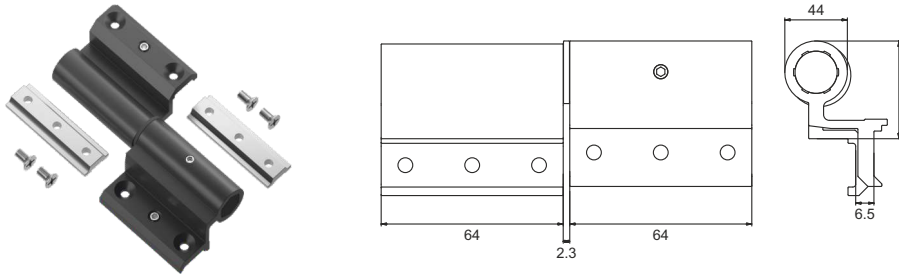
QV453 BLACK /**QV454** WHITE
50MM CASEMENT BUTT HINGE 3-WINGS



MATERIAL : ALUMINIUM



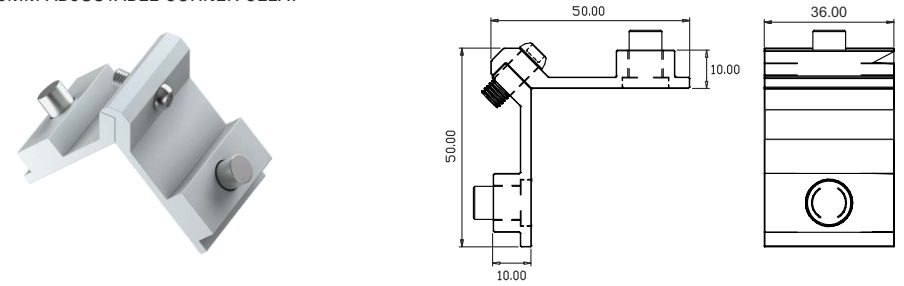
QV455 BLACK /**QV456** WHITE
50MM DOOR HINGE WITHOUT SECURITY KIT



MATERIAL : ALUMINIUM



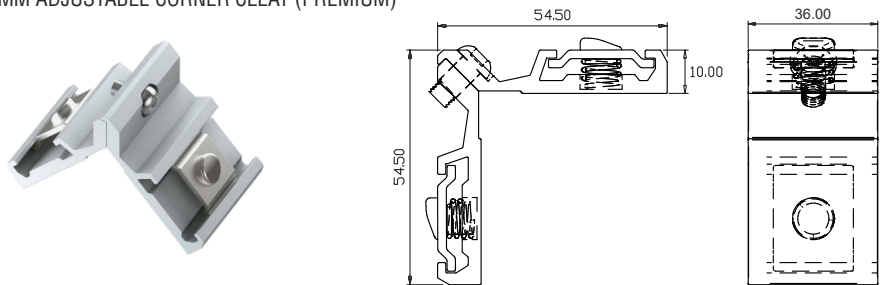
QV208
10X36MM ADJUSTABLE CORNER CLEAT



MATERIAL : ALUMINIUM

FINISH : MILL

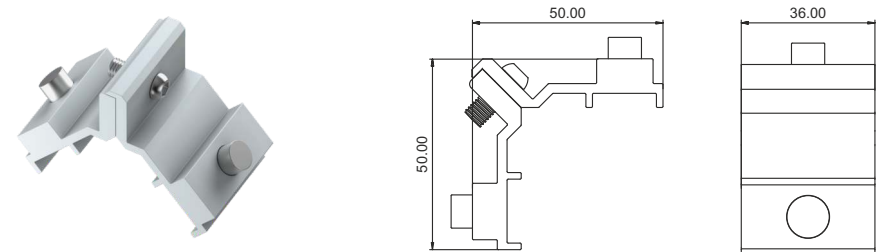
QV209
10X36MM ADJUSTABLE CORNER CLEAT (PREMIUM)



MATERIAL : ALUMINIUM

FINISH : MILL

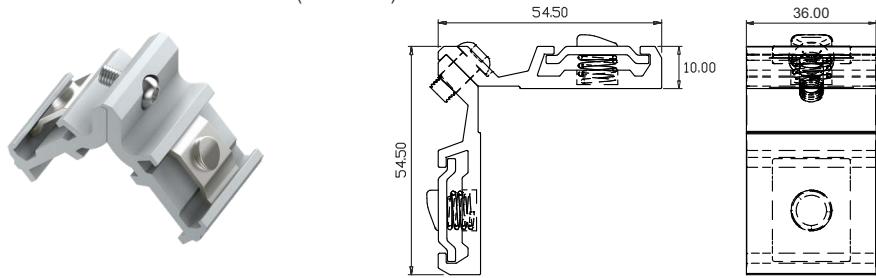
QV217
14X36MM ADJUSTABLE CORNER CLEAT



MATERIAL : ALUMINIUM

FINISH : MILL

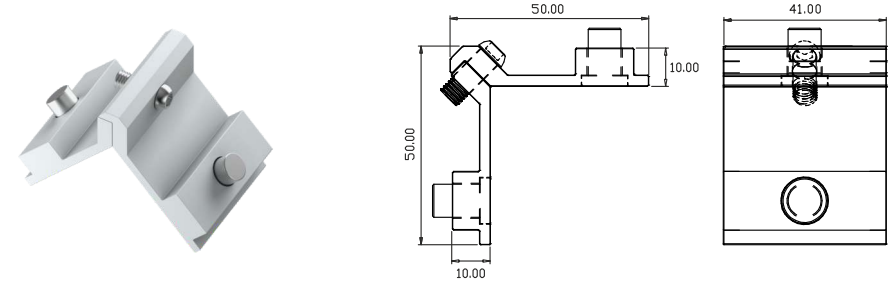
QV224
14X36MM ADJUSTABLE CORNER CLEAT (PREMIUM)



MATERIAL : ALUMINIUM

FINISH : MILL

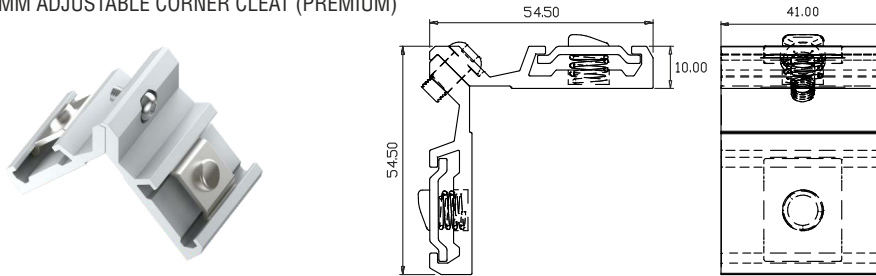
QV210
10X41MM ADJUSTABLE CORNER CLEAT



MATERIAL : ALUMINIUM

FINISH : MILL

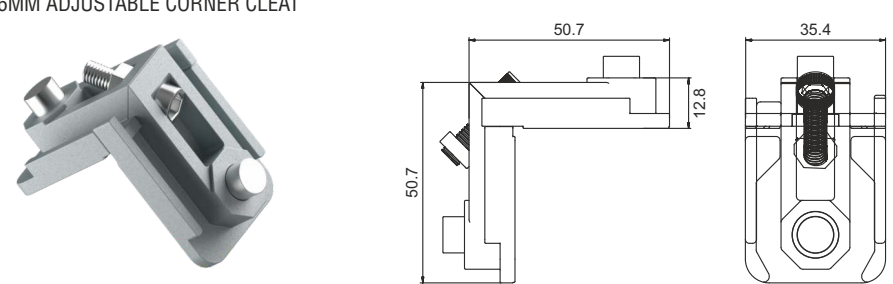
QV211
10X41MM ADJUSTABLE CORNER CLEAT (PREMIUM)



MATERIAL : ALUMINIUM

FINISH : MILL

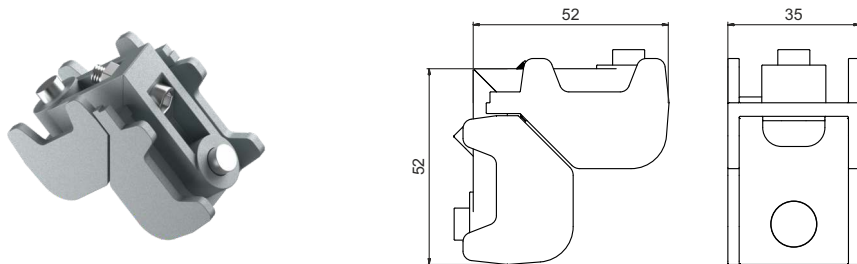
QV222
14X36MM ADJUSTABLE CORNER CLEAT



MATERIAL : CASTING

FINISH : MILL

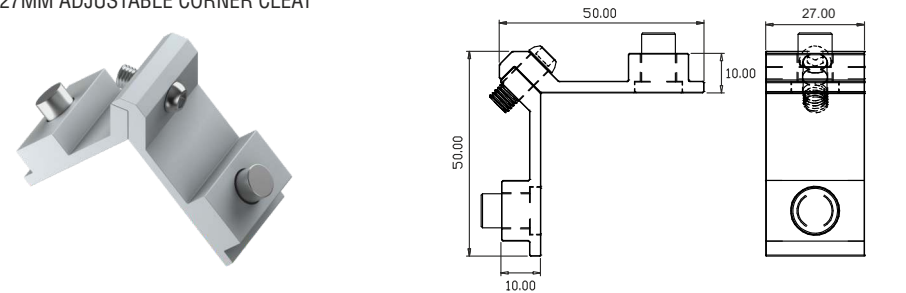
QV223
27X35MM ADJUSTABLE CORNER CLEAT



MATERIAL : CASTING

FINISH : MILL

QV206
10X27MM ADJUSTABLE CORNER CLEAT



MATERIAL : ALUMINIUM

FINISH : MILL

50MM CASEMENT WINDOW
HARDWARE



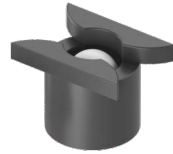
QV519 BLACK / **QV520** WHITE
WATER DRAINAGE CAP WITHOUT
WOOVER PLATE



MATERIAL : NYLON



QV521
DRAIN HOLE COVER BALL



MATERIAL : NYLON



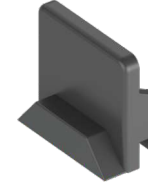
QV522
DRAIN CAPSULE SLOT COVER



MATERIAL : NYLON



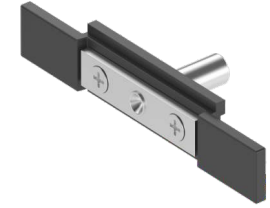
QV539 ZINC / **QV572** BLACK
50MM OPENABLE STRIKER



MATERIAL : CASTING



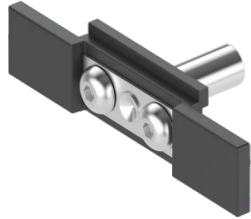
QV552
ROD CONNECTING DEVICE
(STANDARD)



MATERIAL : CASTING



QV553
ROD CONNECTING DEVICE
(PREMIUM)



MATERIAL : CASTING



QV554
SS - 304 GRADE FORK CONNECTOR PIN



MATERIAL : SS

FINISH : MILL

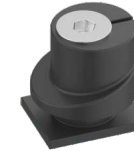
QV555 ZINC / **QV597** BLACK
6MM LOCKING PAWL



MATERIAL : CASTING



QV556 ZINC / **QV591** BLACK
8MM ADJUSTABLE LOCKING PAWL



MATERIAL : CASTING



QV566
50MM ADJUSTABLE PAWL LOCKING STRIKER



MATERIAL : CASTING

FINISH : MILL

QV569 BLACK / **QV599** WHITE
WATER DRAINAGE CAP WITH
WOOVER PLATE



MATERIAL : NYLON



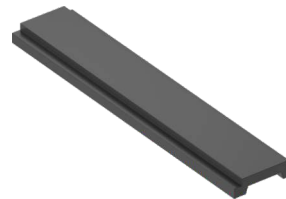
QV589
50MM FRAME & SHUTTER



MATERIAL : NYLON



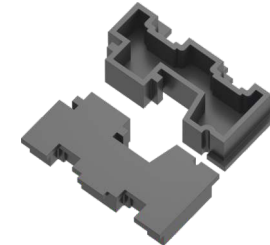
QV901
15/20 EURO POLYIMIDE ROAD



MATERIAL : NYLON



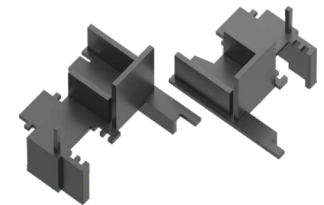
QV917
DOOR BOTTOM CAP ADAPTOR



MATERIAL : NYLON



QV918
FLYING MULLION CAP



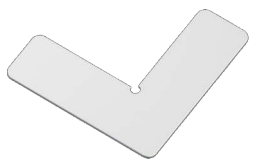
MATERIAL : NYLON



50MM CASEMENT WINDOW
HARDWARE

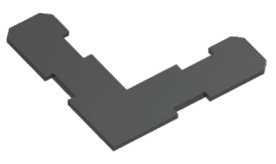


QV916
18.4MM SS CHEVERON SS-304 GRADE



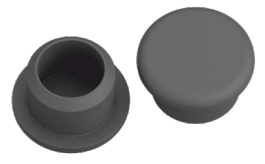
MATERIAL : SS FINISH : MILL

QV502
14MM NYLON CHEVERON



MATERIAL : NYLON B

QV518 BLACK / **QV524** WHITE
11.5MM HOLE CAP



MATERIAL : NYLON W B

QV776 / QV777 / QV778
FREEZE ARM



MATERIAL : SS FINISH : MILL

MODEL NO.	LENGTH
QV776	8"
QV777	10"
QV778	12"

QV1001 TO QV1009
FRICTION ARM



MATERIAL : SS FINISH : MILL

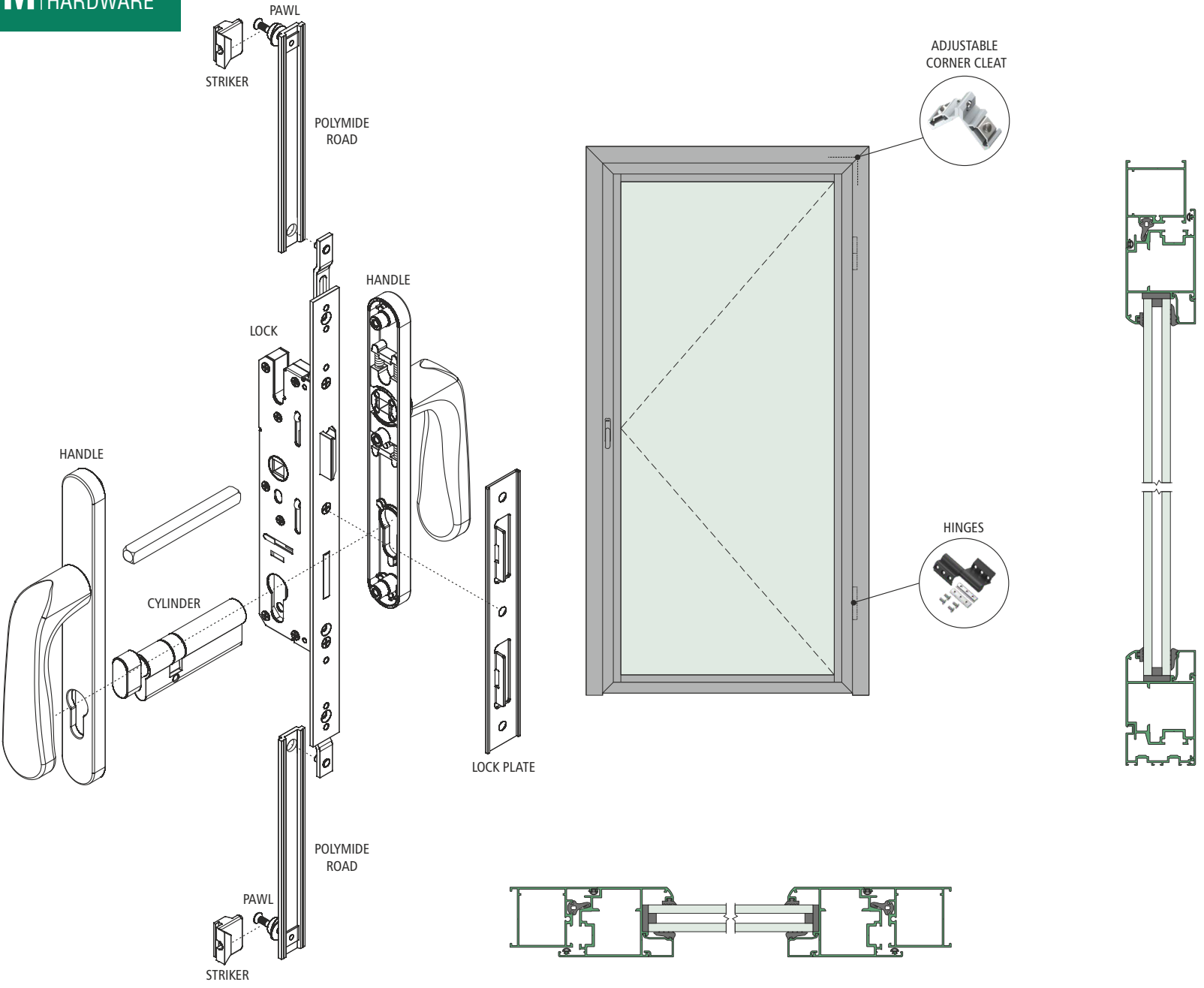
MODEL NO.	LENGTH
QV1001	8"
QV1002	10"
QV1003	12"
QV1004	14"
QV1005	16"
QV1006	18"
QV1007	20"
QV1008	22"
QV1009	24"

SECURING YOUR VIEW

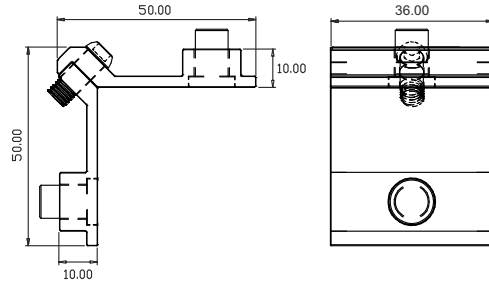


50MM DOOR HARDWARE

50MM DOOR HARDWARE APPLICATION



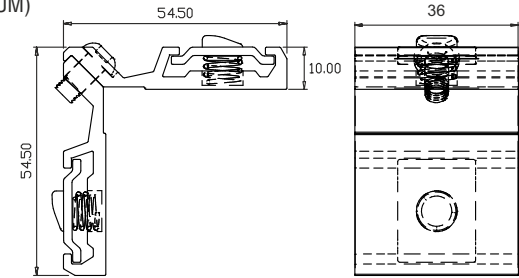
QV217
14X36MM ADJUSTABLE CORNER CLEAT



MATERIAL : ALUMINIUM

FINISH : MILL

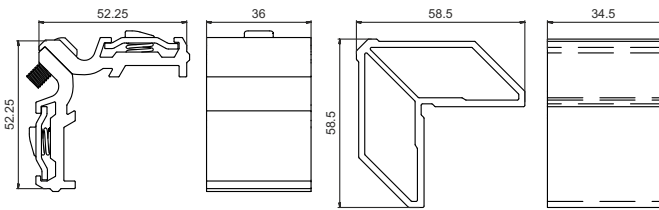
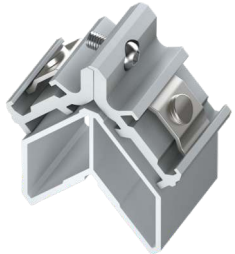
QV224
14X36MM ADJUSTABLE CORNER CLEAT (PREMIUM)



MATERIAL : ALUMINIUM

FINISH : MILL

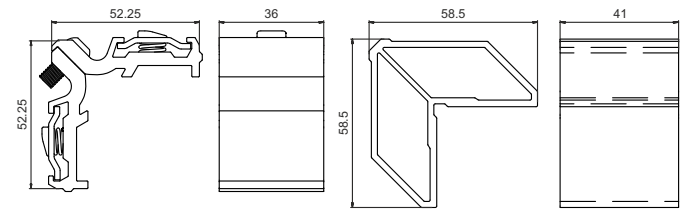
QV218
50MM DOOR SHUTTER ADJUSTABLE CORNER CLEAT



MATERIAL : ALUMINIUM

FINISH : MILL

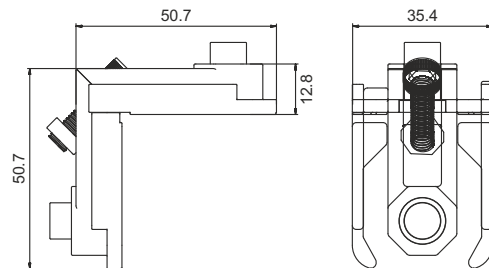
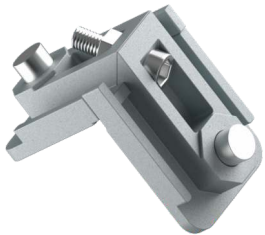
QV219
50MM DOOR FRAME ADJUSTABLE CORNER CLEAT



MATERIAL : ALUMINIUM

FINISH : MILL

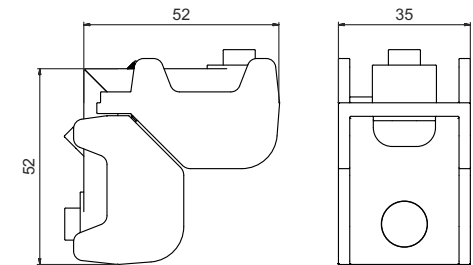
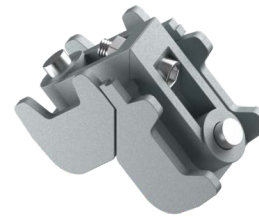
QV222
14X36MM ADJUSTABLE CORNER CLEAT



MATERIAL : CASTING

FINISH : MILL

QV223
27X35MM ADJUSTABLE CORNER CLEAT



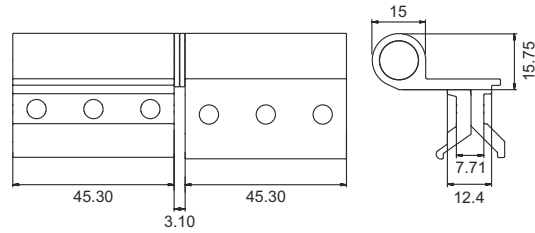
MATERIAL : CASTING

FINISH : MILL

50MM DOOR HARDWARE



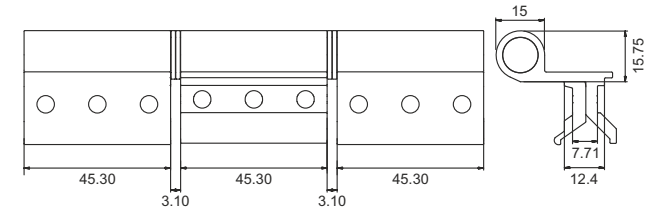
QV451 BLACK /**QV452** WHITE
50MM CASEMENT BUTT HINGE 2-WINGS



MATERIAL : ALUMINIUM



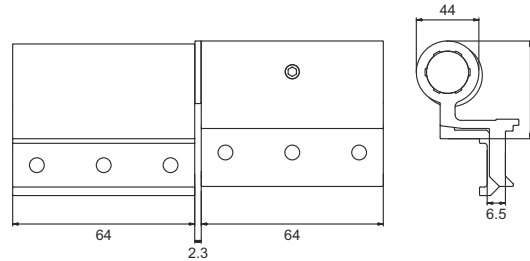
QV453 BLACK /**QV454** WHITE
50MM CASEMENT BUTT HINGE 3-WINGS



MATERIAL : ALUMINIUM



QV455 BLACK /**QV456** WHITE
50MM DOOR HINGE WITHOUT SECURITY KIT



MATERIAL : ALUMINIUM



QV405
70MM CYLINDER
BOTH SIDE KEY



MATERIAL : BRASS

QV406
70MM CYLINDER ONE SIDE KNOB-
ONE SIDE KEY (INWARD)



MATERIAL : BRASS

QV407
70MM CYLINDER ONE SIDE KNOB-
ONE SIDE KEY (OUTWARD)



MATERIAL : BRASS

QV408
80MM CYLINDER
BOTH SIDE KEY



MATERIAL : BRASS

QV409
80MM CYLINDER ONE SIDE KNOB-
ONE SIDE KEY (INWARD)



MATERIAL : BRASS

QV410
80MM CYLINDER ONE SIDE KNOB-
ONE SIDE KEY (OUTWARD)



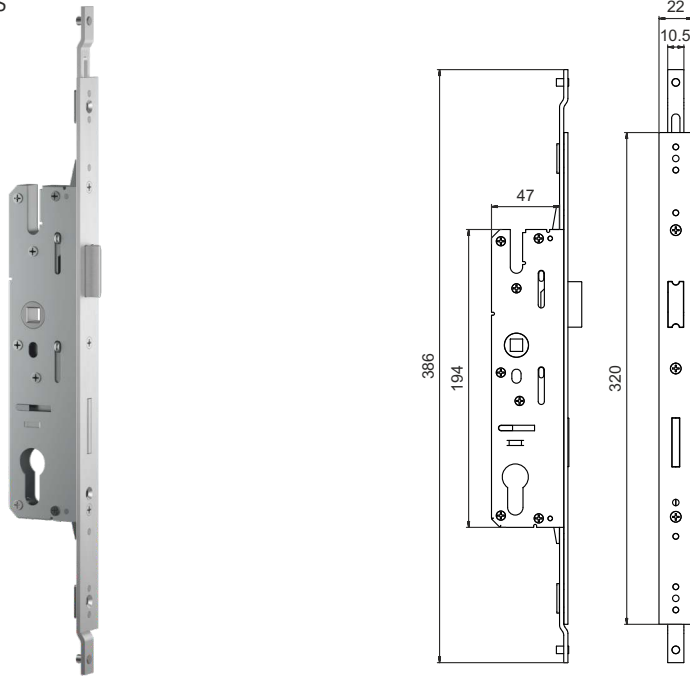
MATERIAL : BRASS

QV411
80MM CYLINDER ONE SIDE KNOB-
ONE SIDE KEY (CENTER)



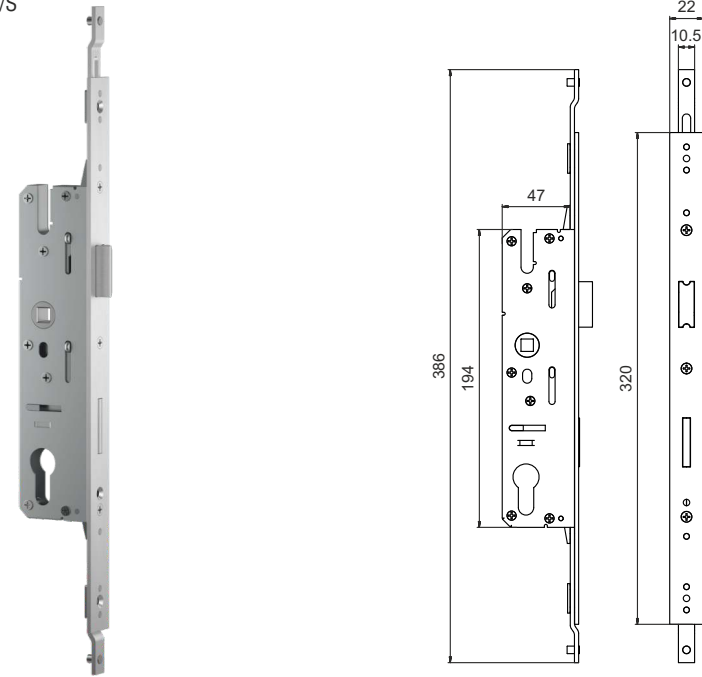
MATERIAL : BRASS

QV301
50MM EURO CASEMENT DOOR MULTILOCKING
LOCK 35MM B/S



MATERIAL : STEEL

QV302
50MM EURO CASEMENT DOOR MULTILOCKING
LOCK 30MM B/S



MATERIAL : STEEL

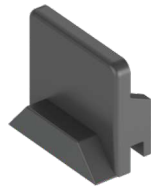
QV522
DRAIN CAPSULE SLOT COVER



MATERIAL : NYLON

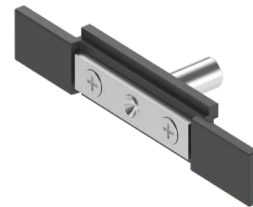


QV539 ZINC / QV572 BLACK
50MM OPENABLE STRIKER



MATERIAL : CASTING

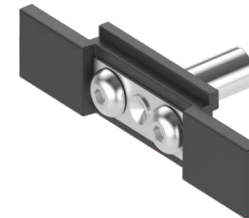
QV552
ROD CONNECTING DEVICE
(STANDARD)



MATERIAL : CASTING



QV553
ROD CONNECTING DEVICE
(PREMIUM)



MATERIAL : CASTING



QV554
SS - 304 GRADE FORK CONNECTOR PIN

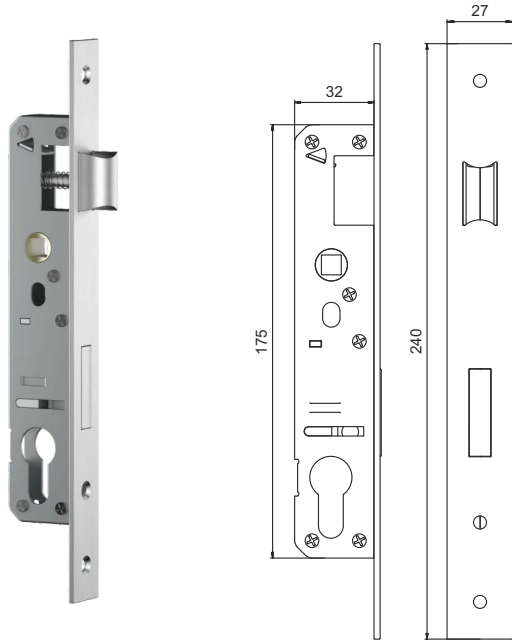


MATERIAL : SS



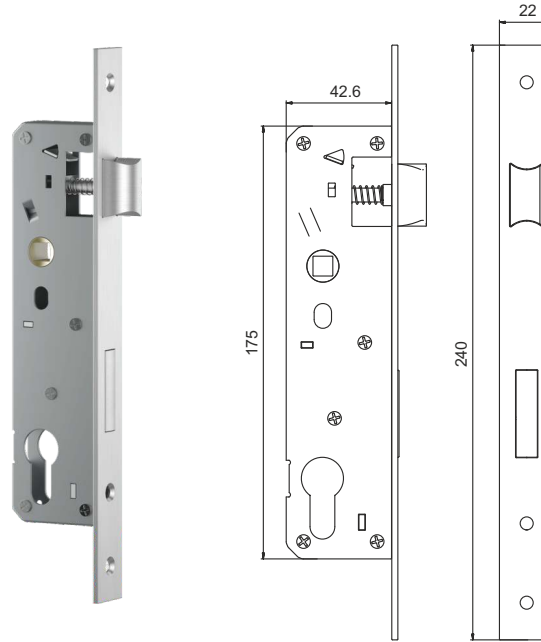
FINISH : MILL

QV304
25MM B/S CASEMENT
DOOR LOCK BODY



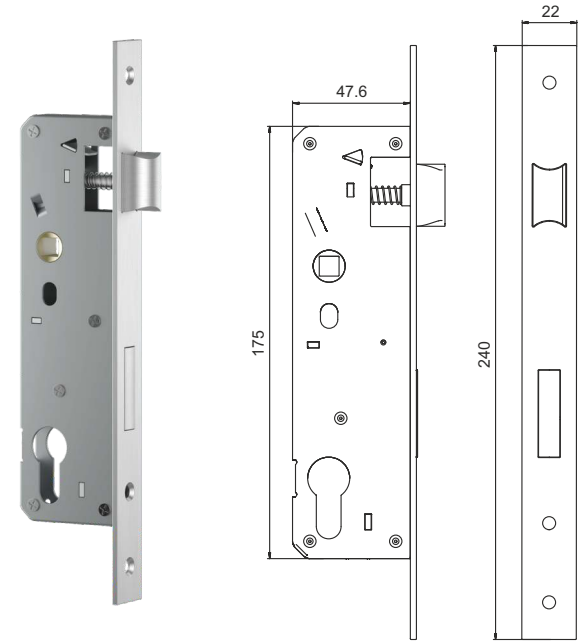
MATERIAL : STEEL

QV305
30MM B/S CASEMENT
DOOR LOCK BODY



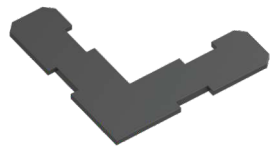
MATERIAL : STEEL

QV306
35MM B/S CASEMENT
DOOR LOCK BODY



MATERIAL : STEEL

QV502
14MM NYLON CHEVERON



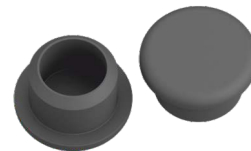
MATERIAL : NYLON

QV352
26X187 PA CENTRE STRICKER



MATERIAL : SS

QV518 BLACK / QV524 WHITE
11.5MM HOLE CAP



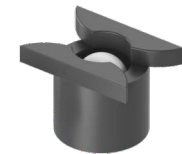
MATERIAL : NYLON

QV519 BLACK / QV520 WHITE
WATER DRAINAGE CAP WITHOUT
WOOPER PLATE



MATERIAL : NYLON

QV521
DRAIN HOLE COVER BALL

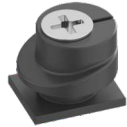


MATERIAL : NYLON

50MM DOOR HARDWARE



QV555 ZINC / QV597 BLACK
6MM LOCKING PAWL



MATERIAL : CASTING



QV556 ZINC / QV591 BLACK
8MM ADJUSTABLE LOCKING PAWL



MATERIAL : CASTING



QV566
50MM ADJUSTABLE PAWL LOCKING STRIKER



MATERIAL : CASTING

FINISH : MILL

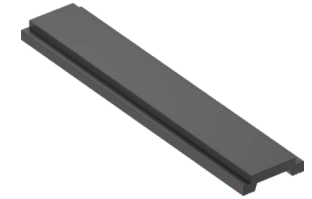
QV569 BLACK / QV599 WHITE
WATER DRAINAGE CAP WITH
WOOVER PLATE



MATERIAL : NYLON



QV901
15/20 EURO POLYMIDE ROD



MATERIAL : NYLON



QV910
15/20 EURO ALUMINIUM ROD



MATERIAL : ALUMINIUM

FINISH : MILL

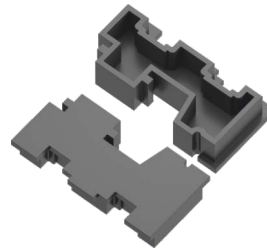
QV916
18.4MM SS CHEVERON SS-304 GRADE



MATERIAL : SS

FINISH : MILL

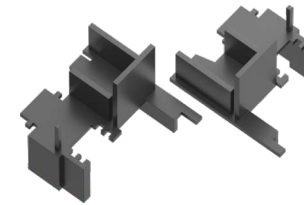
QV917
DOOR BOTTOM CAP ADAPTOR



MATERIAL : NYLON



QV918
FLYING MULLION CAP



MATERIAL : NYLON



QV751 TO QV755
SHUT BOLT



MATERIAL : ALUMINIUM

MODEL NO.	LENGTH
QV751	6"
QV752	8"
QV753	10"
QV754	12"
QV755	20"

BELODEC ENTERPRISE

DESIGNED FOR PERFORMANCE



**CUSTOMISED
HARDWARE PRODUCTS**



QV214
90° CORNER CLEAT (22MM) STANDARD



MATERIAL : ALUMINIUM FINISH : MILL

QV207
10X31MM ADJUSTABLE CORNER CLEAT



MATERIAL : ALUMINIUM FINISH : MILL

QV225
10X28.5 AD. CORNER CLEAT (PREMIUM)



MATERIAL : ALUMINIUM FINISH : MILL

QV605
ONE WAY CONNECTING DEVICE KNOB



MATERIAL : CASTING

QV126
ROLLER FOR MINIMAL SERIES



BODY : ALUMINIUM
WHEELS : SS

QV227
10X28.5MM ADJUSTABLE CORNER CLEAT STANDARD



MATERIAL : ALUMINIUM FINISH : MILL

QV127
ROLLER FOR MINIMAL SERIES



BODY : ALUMINIUM
WHEELS : SS

QV919
CORNER BRACKET



MATERIAL : MS

QV109
15X24X150 SS BODY DOUBLE ADJUSTABLE ROLLER - U GROOVE



CAPACITY : 120KG/PAIR
BODY : SS
WHEELS : NYLON

QV110
15X23X238 SS BODY FOUR ADJUSTABLE ROLLER - U GROOVE



CAPACITY : 180KG/PAIR
BODY : SS
WHEELS : NYLON

QV114
15X17X145 SS BODY 2 WHEEL ADJUSTABLE ROLLER - U GROOVE



CAPACITY : 120KG/PAIR
BODY : SS
WHEELS : NYLON

QV117
15X20X90 SS BODY ONE WHEEL ADJUSTABLE ROLLER - U GROOVE



CAPACITY : 60KG/PAIR
BODY : SS
WHEELS : NYLON

QV118
15X20X145 SS BODY DOUBLE WHEEL ADJUSTABLE ROLLER - U GROOVE



CAPACITY : 120KG/PAIR
BODY : SS
WHEELS : NYLON

QV119
31MM SS TWO WHEEL ADJUSTABLE ROLLER



CAPACITY : 250KG/PAIR
BODY : ALUMINIUM
WHEELS : SS

QV120
15X17X196 SS BODY FOUR WHEEL ADJUSTABLE ROLLER - U GROOVE



CAPACITY : 180KG/PAIR
BODY : SS
WHEELS : NYLON

**CUSTOMISED
HARDWARE PRODUCTS**



QV923
U FRAME PACKERS (4MM)



MATERIAL : NYLON



QV920
GLASS PACKERS (1MM)



MATERIAL : NYLON



QV921
GLASS PACKERS (2MM)



MATERIAL : NYLON



QV922
GLASS PACKERS (4MM)



MATERIAL : NYLON



STRENGTH IN SIMPLICITY





www.qvista.co.in



belodec Enterprise

Head Office :

Godown No. 03, Survey No. 396,
GSL Nova Compound,
Sarkhej-Bavla Highway, Moraiya,
Ahmedabad - 382213 (Gujarat) India.
Cell : +91 - 98985 00009
E:mail : info@qvista.co.in

Website : www.qvista.co.in