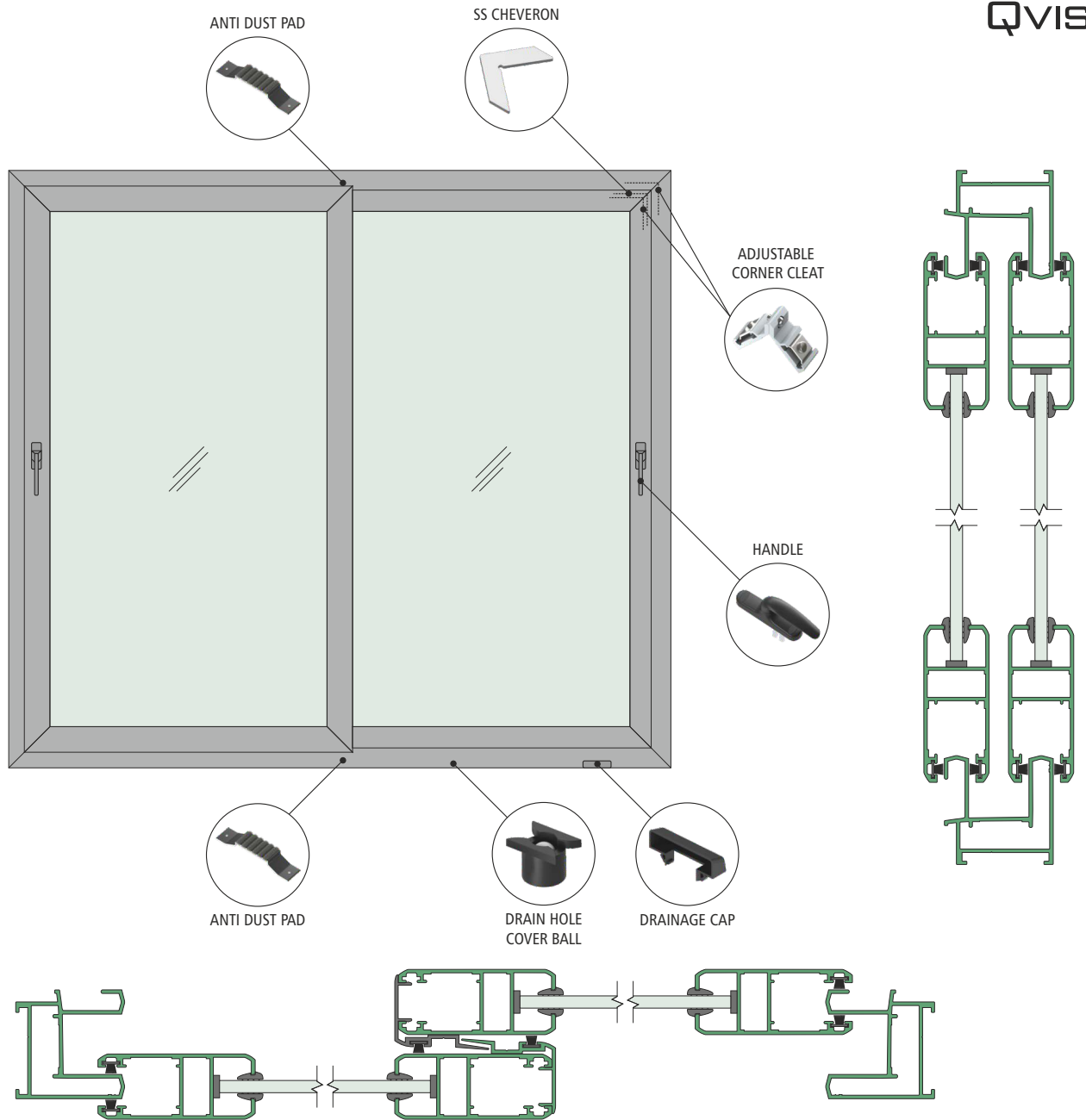
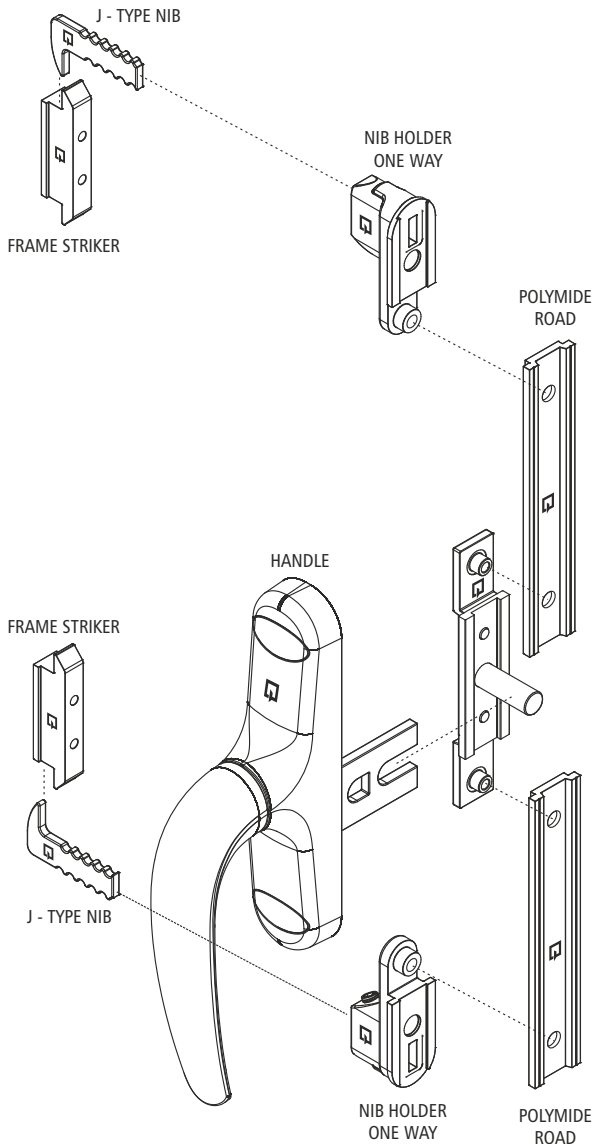
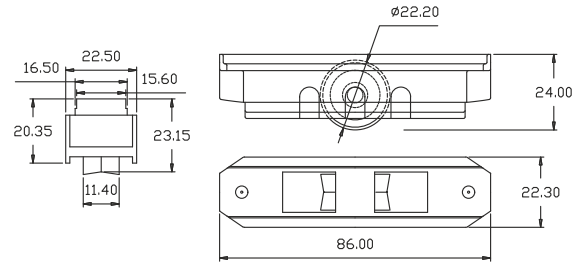
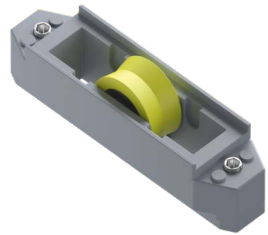


# 27MM SLIDING WINDOW HARDWARE

## 27MM SLIDING WINDOW HARDWARE APPLICATION

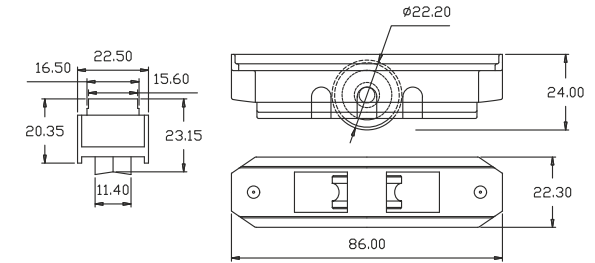


**QV101**  
FIX ROLLER WITH SINGLE BEARING (2+1) (V GROOVE)



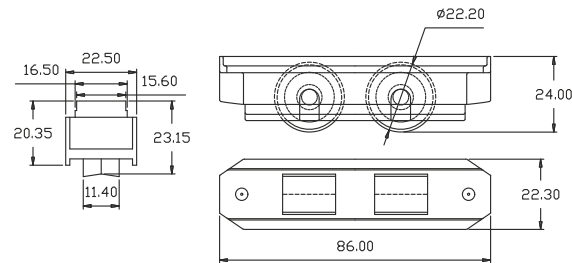
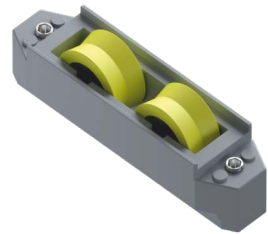
CAPACITY : 40KG/PAIR  
BODY : PLASTIC  
WHEELS : NYLON

**QV102**  
FIX ROLLER WITH SINGLE BEARING (2+1) (U GROOVE)



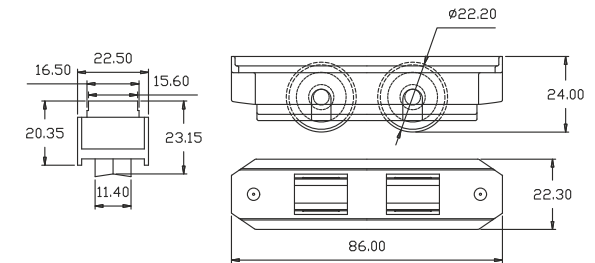
CAPACITY : 40KG/PAIR  
BODY : PLASTIC  
WHEELS : NYLON

**QV103**  
FIX ROLLER WITH DOUBLE BEARING (2+2) (V GROOVE)



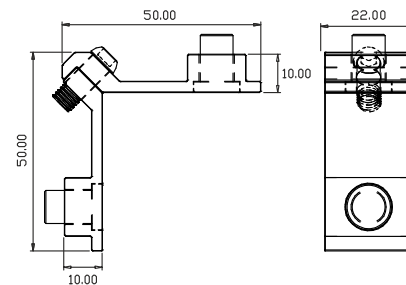
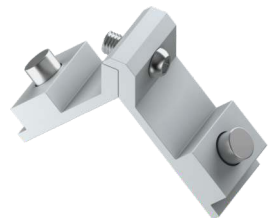
CAPACITY : 60KG/PAIR  
BODY : PLASTIC  
WHEELS : NYLON

**QV104**  
FIX ROLLER WITH DOUBLE BEARING (2+2) (U GROOVE)



CAPACITY : 60KG/PAIR  
BODY : PLASTIC  
WHEELS : NYLON

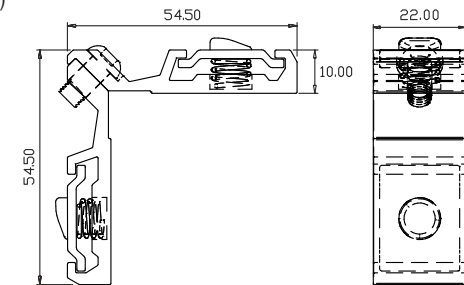
**QV201**  
10X22MM ADJUSTABLE CORNER CLEAT



MATERIAL : ALUMINIUM

FINISH : MILL

**QV202**  
10X22MM ADJUSTABLE CORNER CLEAT (PREMIUM)

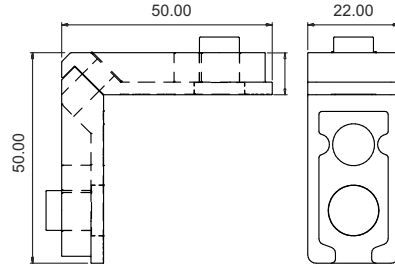


MATERIAL : ALUMINIUM

**B**

FINISH : MILL

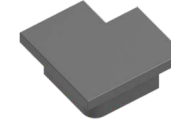
**QV220**  
10X22MM ADJUSTABLE CORNER CLEAT



MATERIAL : CASTING

FINISH : MILL

**QV501**  
11MM NYLON CHEVERON



MATERIAL : NYLON

**QV505**  
15.00MM INTERLOCK SCREW CAP



MATERIAL : NYLON

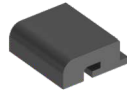
**QV507** BLACK / **QV528** WHITE  
27MM SERIES INTERLOCK WITH CAP



MATERIAL : NYLON



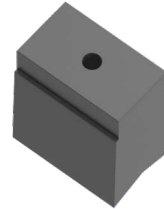
**QV509** BLACK / **QV594** WHITE  
VENT GUIDE



MATERIAL : NYLON



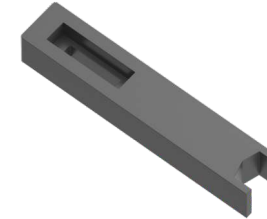
**QV511** BLACK / **QV531** WHITE  
27MM LOCK GUIDE



MATERIAL : NYLON



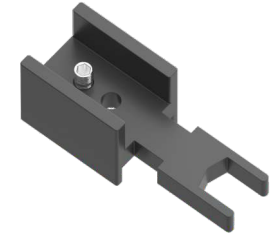
**QV513** BLACK / **QV530** WHITE  
27MM SERIES ANTI LIFT GUIDE



MATERIAL : NYLON



**QV514** WHITE / **QV527** WHITE  
27MM SERIES ANTI LIFT Y-GUARD



MATERIAL : NYLON



**QV515** BLACK / **QV529** WHITE  
BUFFER BUMP STOPPER



MATERIAL : NYLON



**QV606** BLACK / **QV607** WHITE  
BUFFER BUMP STOPPER  
(U&V-GROOVE)



MATERIAL : NYLON



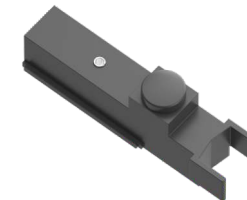
**QV516**  
ANTI LIFT WITH BUMP STOPPER



MATERIAL : NYLON



**QV517**  
EURO GROOVE ANTI LIFT WITH  
BUMP STOPPER



MATERIAL : NYLON



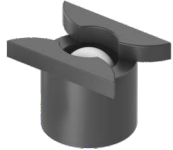
**QV519** BLACK / **QV520** WHITE  
WATER DRAINAGE CAP WITHOUT  
WOOVER PLATE



MATERIAL : NYLON



**QV521**  
DRAIN HOLE COVER BALL



MATERIAL : NYLON



**QV522**  
DRAIN CAPSULE SLOT COVER



MATERIAL : NYLON



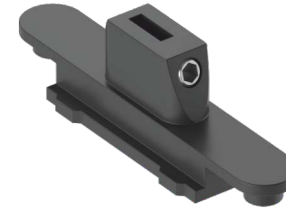
**QV534 BLACK / QV535 WHITE**  
BUFFER BUMP STOPPER



MATERIAL : CASTING



**QV542 BLACK / QV596 ZINC**  
NIB HOLDER TWO WAY



MATERIAL : CASTING



**QV543**  
NIB HOLDER TWO WAY SMALL



MATERIAL : CASTING



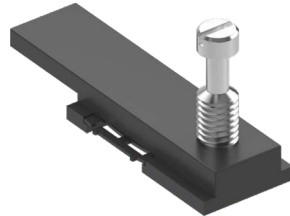
**QV581**  
ONE WAY NIB HOLDER



MATERIAL : CASTING



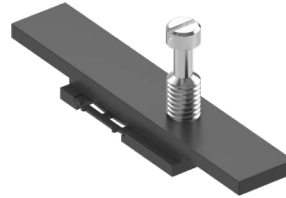
**QV544**  
ONE WAY CONNECTING MULTI  
LOCKING DEVICE 25MM (ADJUSTABLE)



MATERIAL : CASTING



**QV545**  
TWO WAY CONNECTING MULTI  
LOCKING DEVICE 25MM (ADJUSTABLE)



MATERIAL : CASTING



**QV548**  
SLIDING MULTILOCKING  
RECIEVER SCREW



MATERIAL : CASTING



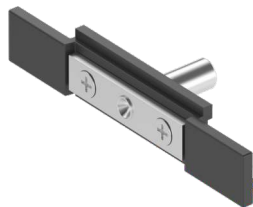
**QV549**  
SLIDING MULTILOCKING  
RECIEVER ALLEN-KEY



MATERIAL : CASTING



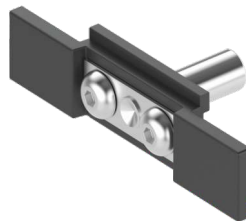
**QV552**  
ROD CONNECTING DEVICE  
(STANDARD)



MATERIAL : CASTING



**QV553**  
ROD CONNECTING DEVICE  
(PREMIUM)



MATERIAL : CASTING



**QV554**  
SS - 304 GRADE FORK CONNECTOR PIN



MATERIAL : SS

FINISH : MILL

**QV557**  
37MM STREIGHT T- TYPE NIB



MATERIAL : SS

FINISH : MILL

**QV558**  
50MM STREIGHT T- TYPE NIB



MATERIAL : SS

FINISH : MILL

# 27MM SLIDING WINDOW HARDWARE



**QV559**  
37MM STREIGHT J- TYPE NIB



MATERIAL : SS FINISH : MILL

**QV560**  
50MM STREIGHT J- TYPE NIB



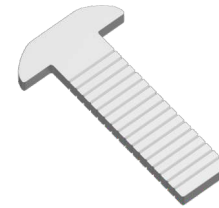
MATERIAL : SS FINISH : MILL

**QV561**  
SS NIB FOR CONCEAL LOCK



MATERIAL : SS FINISH : MILL

**QV562**  
SS BEND NIB T-TYPE



MATERIAL : SS FINISH : MILL

**QV569** BLACK / **QV599** WHITE  
WATER DRAINAGE CAP WITH  
WOOVER PLATE



MATERIAL : NYLON W B

**QV573** ZINC / **QV574** BLACK  
DUCK FRAME STRIKER



MATERIAL : CASTING Z B

**QV575** ZINC / **QV576** BLACK  
STRAIGHT FRAME STRIKER



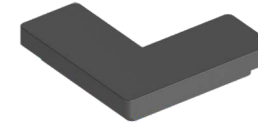
MATERIAL : CASTING Z B

**QV577** ZINC / **QV578** BLACK  
8.5MM SLIM FRAME STRIKER



MATERIAL : CASTING Z B

**QV588**  
L - NYLON CHEVERON FOR DOMAL



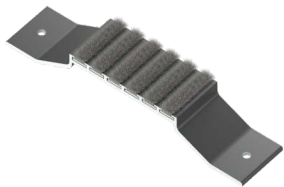
MATERIAL : NYLON Z B

**QV901**  
15/20 EURO POLYMIDE ROAD



MATERIAL : NYLON B

**QV602**  
ALUMINIUM ANTIDUST PAD (25MM)



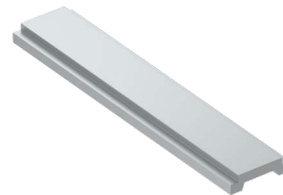
MATERIAL : ALUMINIUM B

**QV908** (BLACK) / **QV909** (WHITE)  
POCKET SLIDING STRIKER



MATERIAL : CASTING W B

**QV910**  
15/20 EURO ALUMINIUM ROD



MATERIAL : ALUMINIUM FINISH : MILL

**QV913**  
4.5MM SS CHEVERON SS-304 GRADE



MATERIAL : SS FINISH : MILL

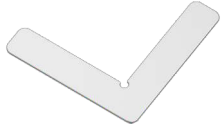
**QV914**  
6.5MM SS CHEVERON SS-304 GRADE



MATERIAL : SS FINISH : MILL

# 27MM SLIDING WINDOW HARDWARE

**QV915**  
12MM SS CHEVERON SS-304 GRADE



MATERIAL : SS FINISH : MILL

**QV510**  
DISTANCE PICE



MATERIAL : NYLON B

**QV518** BLACK / **QV524** WHITE  
11.5MM HOLE CAP



MATERIAL : NYLON W B

BELODEC ENTERPRISE

**QV701 TO QV708**  
ALUMINIUM SLIDING ESPAG-2P



MATERIAL : ALUMINIUM FINISH : MILL

MODEL NO.	LENGTH
<b>QV701</b>	400MM
<b>QV702</b>	600MM
<b>QV703</b>	800MM
<b>QV704</b>	1000MM
<b>QV705</b>	1200MM
<b>QV706</b>	1400MM
<b>QV707</b>	1600MM
<b>QV708</b>	1800MM

